

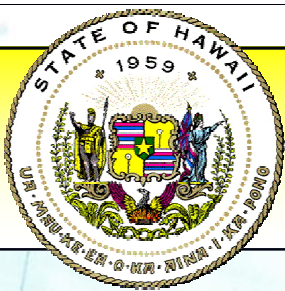
Hawaii Department of Transportation

# **FARRINGTON HIGHWAY INTERSECTION IMPROVEMENTS**

## **PM ContraFlow During Construction**

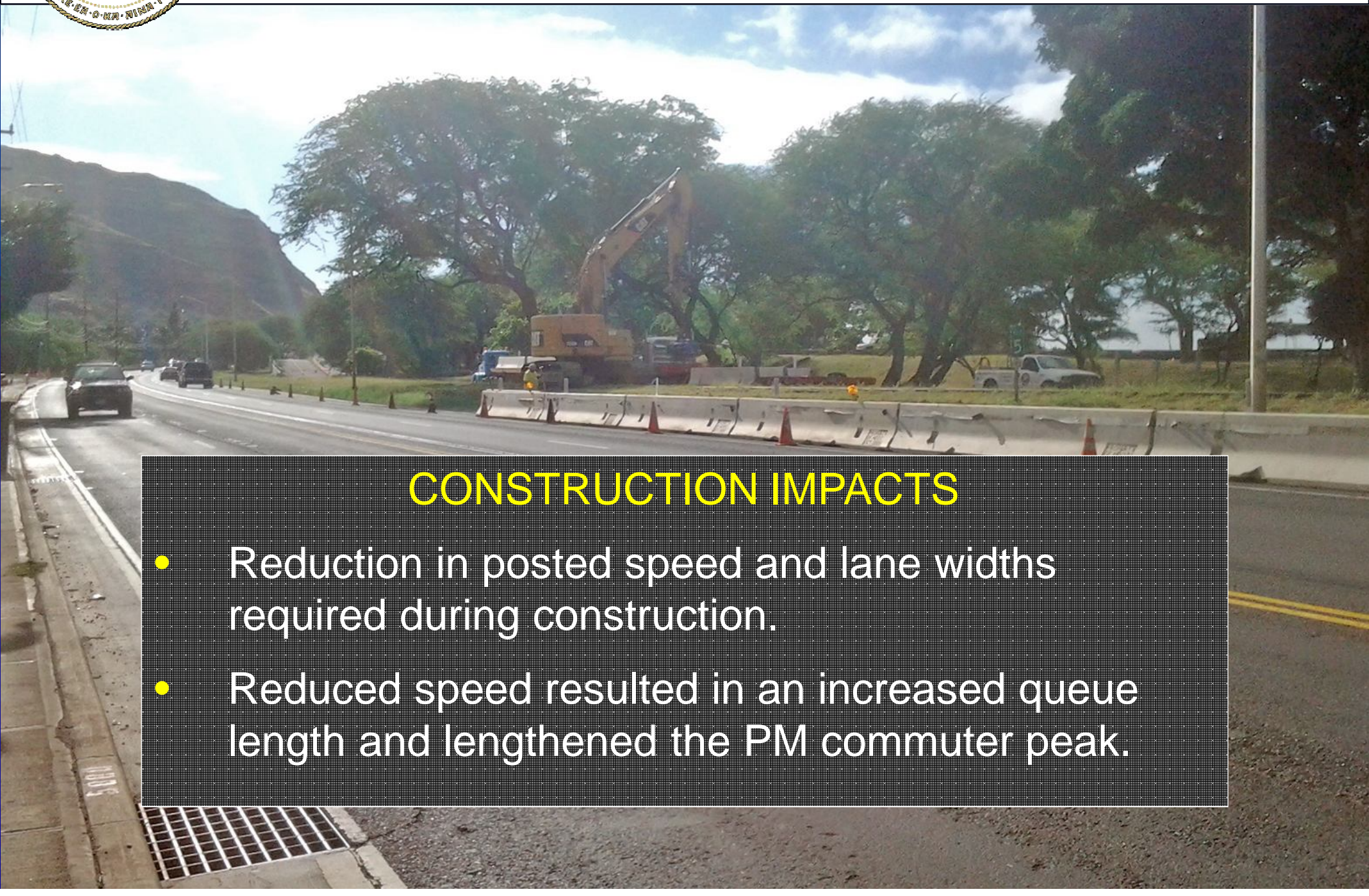
Nanakuli Neighborhood Board

March 15, 2016



## Farrington Highway Intersection Improvements

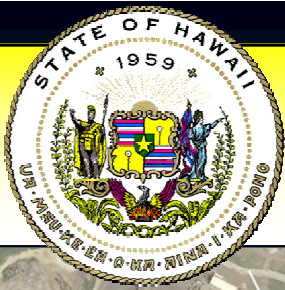
# PM ContraFlow Area & Purpose



### CONSTRUCTION IMPACTS

- Reduction in posted speed and lane widths required during construction.
- Reduced speed resulted in an increased queue length and lengthened the PM commuter peak.





## Farrington Highway Intersection Improvements

# PM ContraFlow Area & Purpose

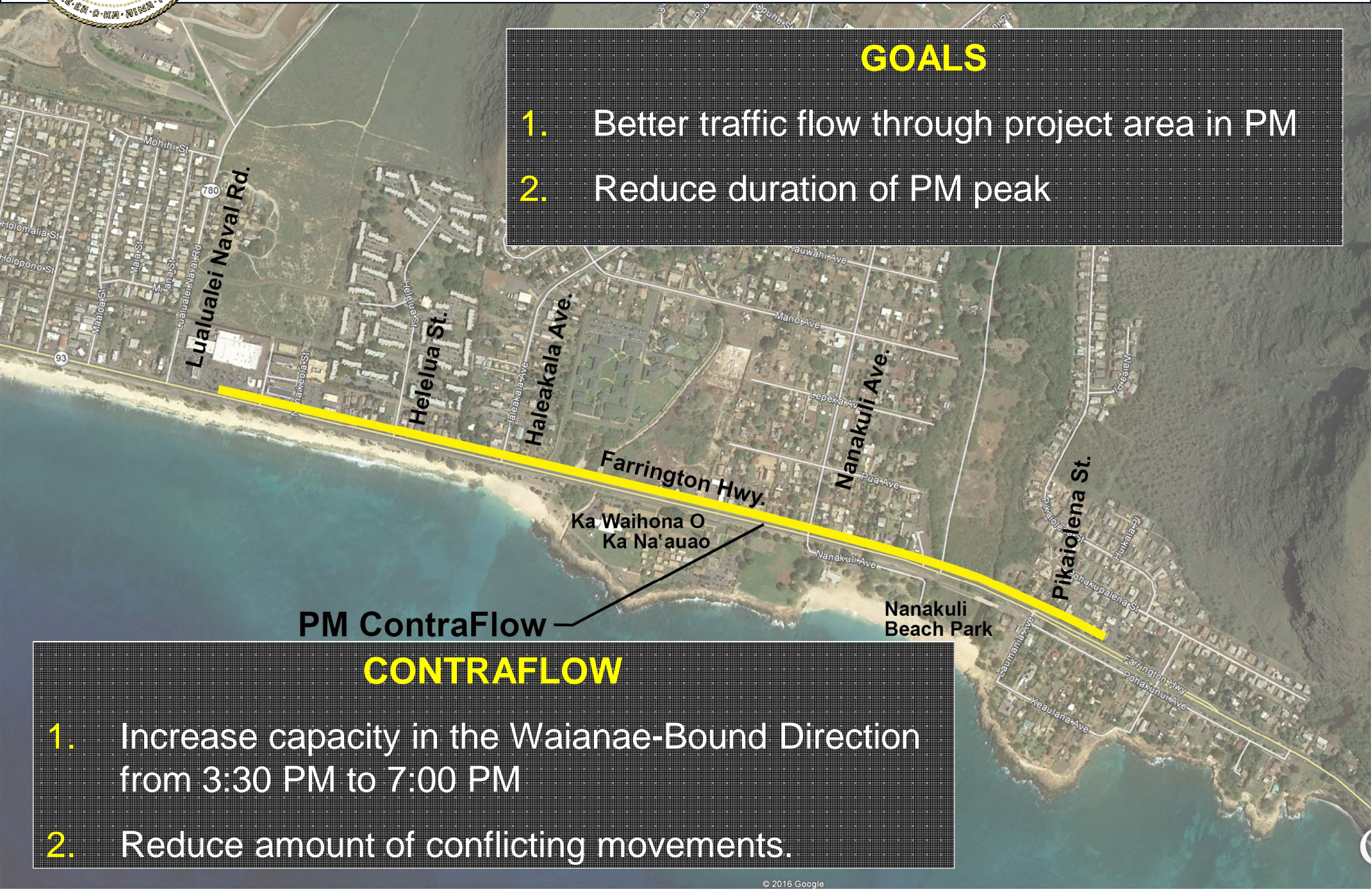
### GOALS

1. Better traffic flow through project area in PM
2. Reduce duration of PM peak

PM ContraFlow

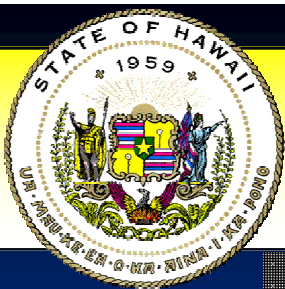
### CONTRAFLOW

1. Increase capacity in the Waianae-Bound Direction from 3:30 PM to 7:00 PM
2. Reduce amount of conflicting movements.



- [illegible]

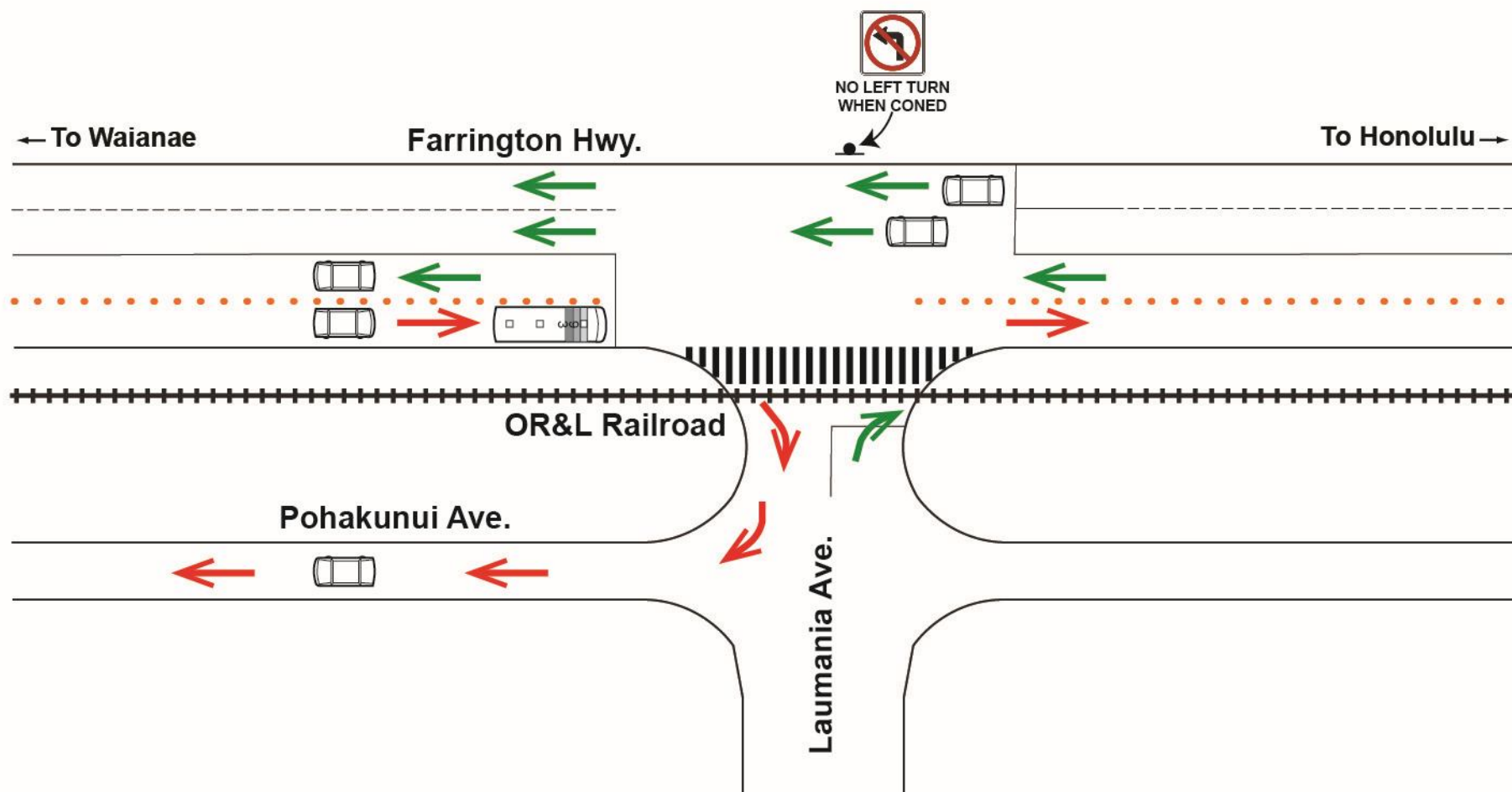




## Farrington Highway Intersection Improvements

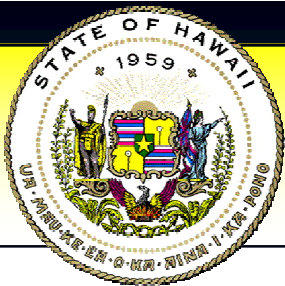
# Left Turn Detour – Nanakuli Beach Park

- Honolulu-bound left turns proceed to Laumania Avenue
- Turn right onto Laumania and then onto Pohakunui Avenue, proceeding into Nanakuli Beach Park



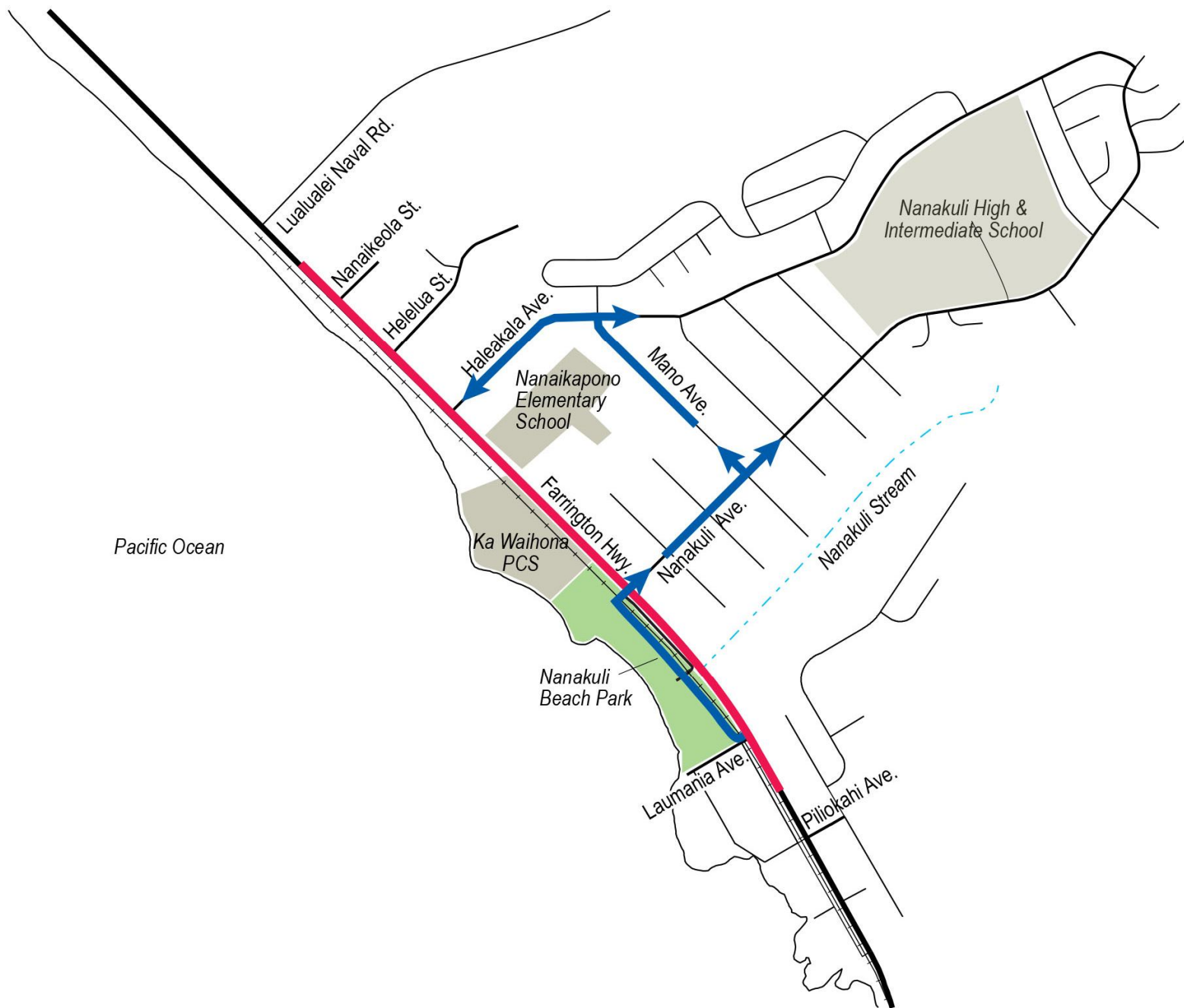
- 
- The diagram illustrates the intersection of Farrington Hwy. and Nanakuli Ave. Farrington Hwy. runs horizontally, with traffic flowing from right to left. It is labeled "← To Waianae" on the left and "To Honolulu →" on the right. Nanakuli Ave. runs vertically, intersecting Farrington Hwy. from the top. The intersection features a crosswalk with vertical black bars. A bus stop is located on the left side of Farrington Hwy., near the intersection. The OR&L Railroad tracks run horizontally below Farrington Hwy. Traffic flow is indicated by green arrows: two lanes on Farrington Hwy. moving left, one lane on Nanakuli Ave. moving down, and one lane on Farrington Hwy. moving right. A red arrow points from the bus stop towards the intersection. A car is shown at the intersection, and another car is shown on the right side of Farrington Hwy. moving left. A car is also shown on the bottom right of the diagram, moving left.

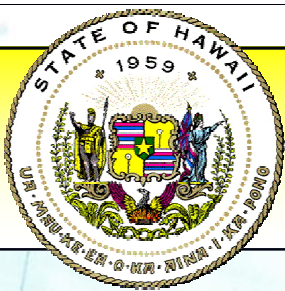




# Farrington Highway Intersection Improvements

## ContraFlow Diagram

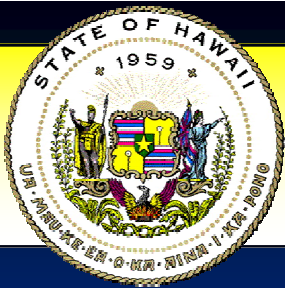




# Current Status

- Contraflow Implemented by late summer 2016
- Day time work
  - No Lane closures
    - Maintain **4 lanes of traffic** during the day..
  - Makai side work behind concrete barriers:
    - Realign historic OR&L railroad tracks
    - Relocate utilities and install new lighting
    - Construct retaining walls and shared use path
    - Road widening
- Target Completion – Summer 2017





# Farrington Highway Intersection Improvements

## More Information

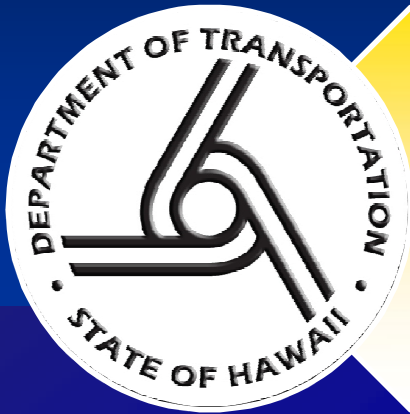
**HDOT**

[dotpao@hawaii.gov](mailto:dotpao@hawaii.gov)

[hidot.hawaii.gov](http://hidot.hawaii.gov)

HDOT Facebook & Twitter

587-2160



# Mahalo

*Thank you for your patience as  
HDOT works to improve  
our state highways*





- 
- The diagram illustrates the intersection of Farrington Hwy. and a cross street. Farrington Hwy. runs horizontally, with traffic flowing from left to right. A sign above the intersection reads "NO LEFT TURN WHEN CONED" with a red circle and slash over a left-turn arrow. The cross street runs vertically, with traffic flowing from top to bottom. A "P" sign is located on the cross street. A bus stop is marked on the right side of the cross street. Vehicles are shown in various positions: some are stopped at the intersection, some are moving through it, and some are turning. Green arrows indicate the direction of traffic flow. Red arrows indicate the direction of traffic flow. Orange dots are scattered across the intersection area. A black and white striped barrier is located on the right side of the intersection. The intersection is labeled "Laumania" on the left and "Piliokahi" on the right. The top of the diagram is labeled "To Waianae" and "To Honolulu".