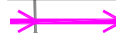



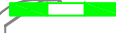

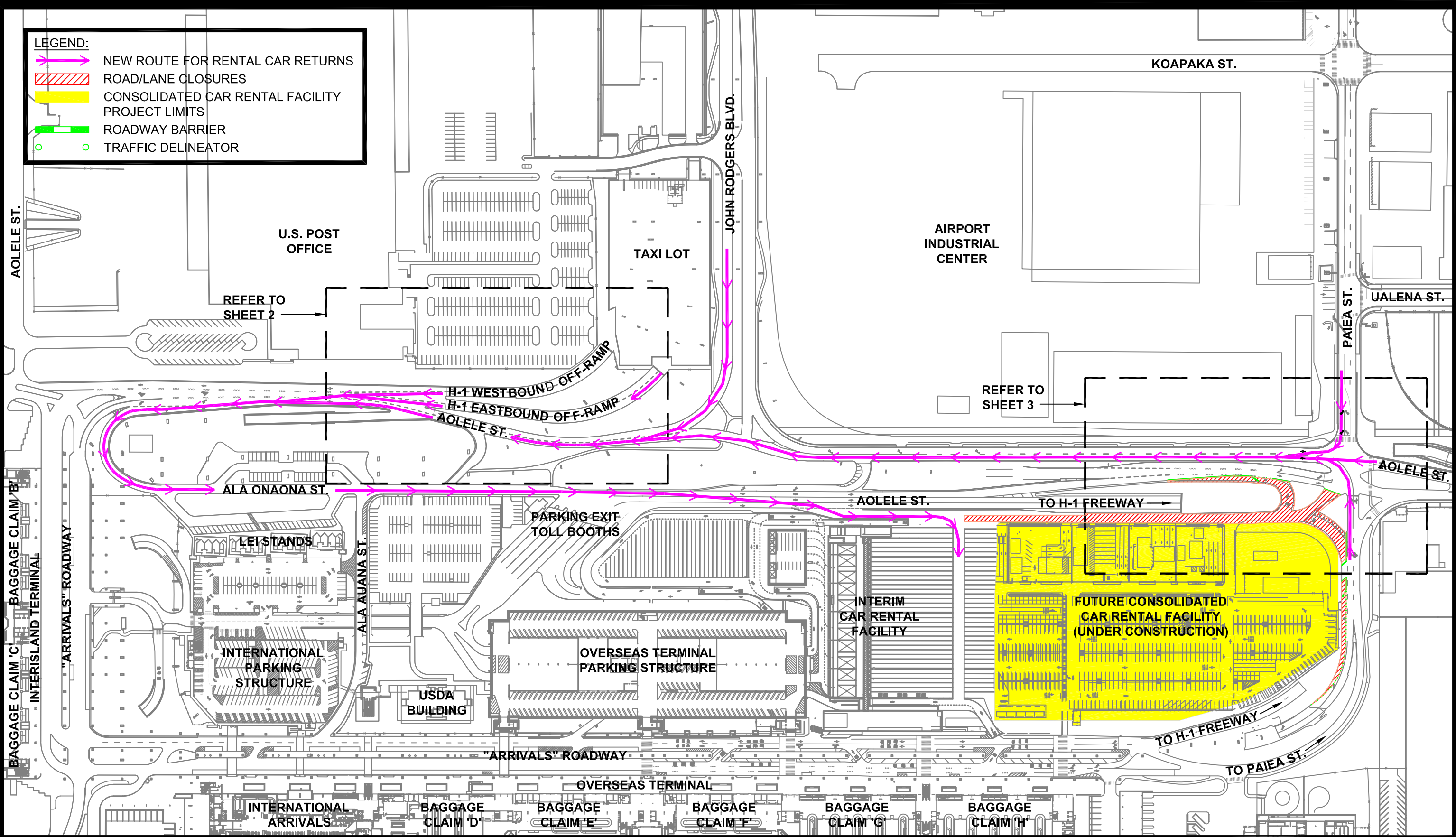








LEGEND:

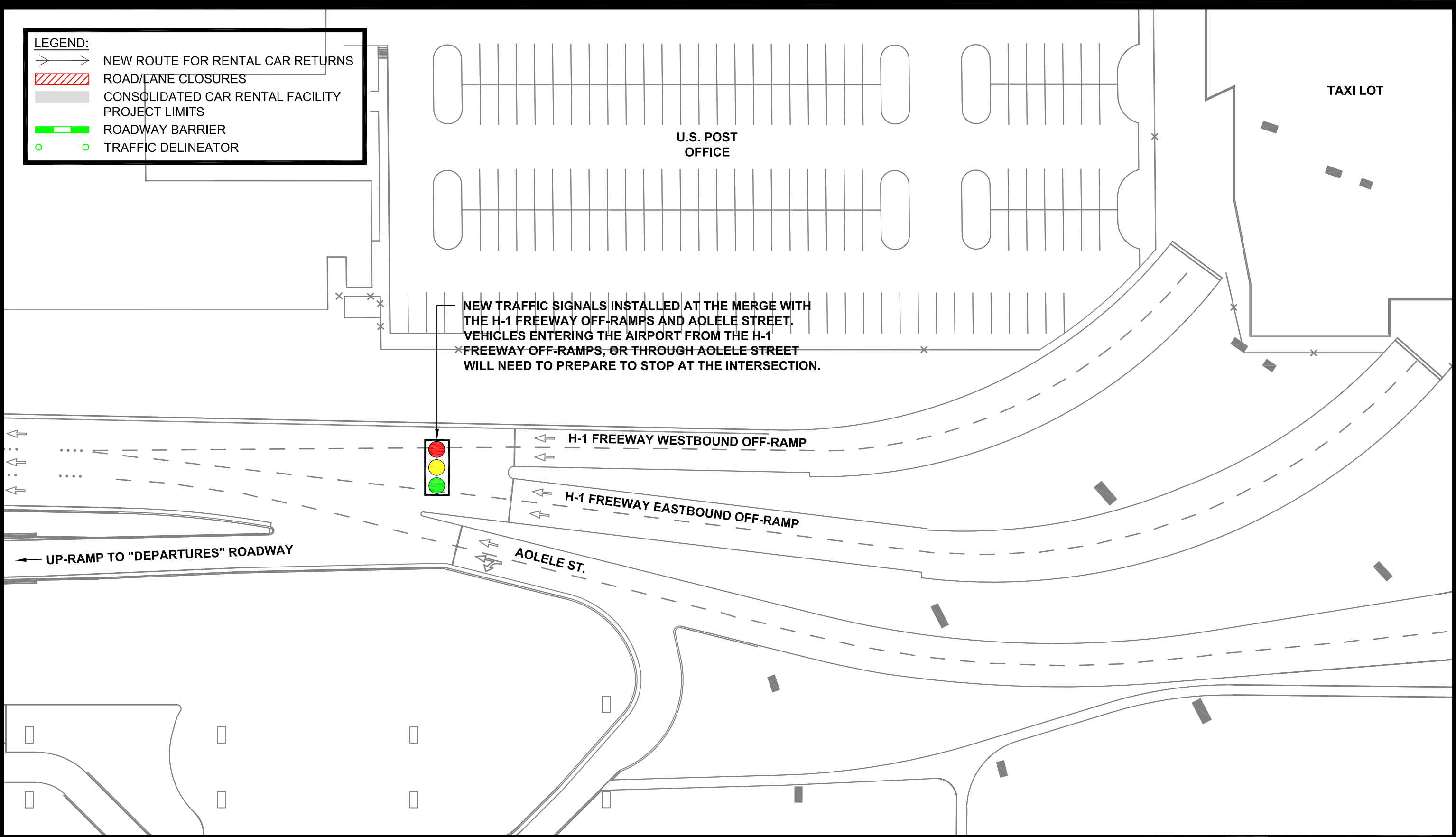
-  NEW ROUTE FOR RENTAL CAR RETURNS
-  ROAD/LANE CLOSURES
-  CONSOLIDATED CAR RENTAL FACILITY
-  PROJECT LIMITS
-  ROADWAY BARRIER
-  TRAFFIC DELINEATOR



**HNL CONSOLIDATED CAR RENTAL FACILITY
GROUND FLOOR PLAN, NEW ROUTE OF RENTAL CAR RETURN ACCESS**







LEGEND:

-  NEW ROUTE FOR RENTAL CAR RETURNS
-  ROAD/LANE CLOSURES
-  CONSOLIDATED CAR RENTAL FACILITY
-  PROJECT LIMITS
-  ROADWAY BARRIER
-  TRAFFIC DELINEATOR



**HNL CONSOLIDATED CAR RENTAL FACILITY
 H-1 FREEWAY OFF-RAMP MERGE WITH AOLELE STREET
 TRAFFIC SIGNALS AT THIS INTERSECTION WILL BE ACTIVATED ON AUGUST 14, 2017**

LEGEND:

-  NEW ROUTE FOR RENTAL CAR RETURNS
-  ROAD/LANE CLOSURES
-  CONSOLIDATED CAR RENTAL FACILITY
-  PROJECT LIMITS
-  ROADWAY BARRIER
-  TRAFFIC DELINEATOR

**AIRPORT
INDUSTRIAL
CENTER**

PAIEA ST.

AOLELE ST.

CANAL

RENTAL CAR "RETURN"
ROADWAY CLOSED FOR
CONSTRUCTION.

TO H-1 FREEWAY →

FUTURE CONSOLIDATED
CAR RENTAL FACILITY
(UNDER CONSTRUCTION)

ENTERPRISE
RENTAL CAR

**HNL CONSOLIDATED CAR RENTAL FACILITY
INTERSECTION OF PAIEA STREET AND AOLELE STREET
TRAFFIC SIGNALS WILL BE MODIFIED. ACCESS TO THE RENTAL CAR FACILITY THROUGH THIS INTERSECTION WILL BE BLOCKED, STARTING ON AUGUST 14, 2017.**