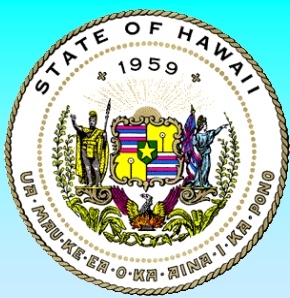


Aiea-Pearl City Town Meeting

## PROJECTS IN CONSTRUCTION

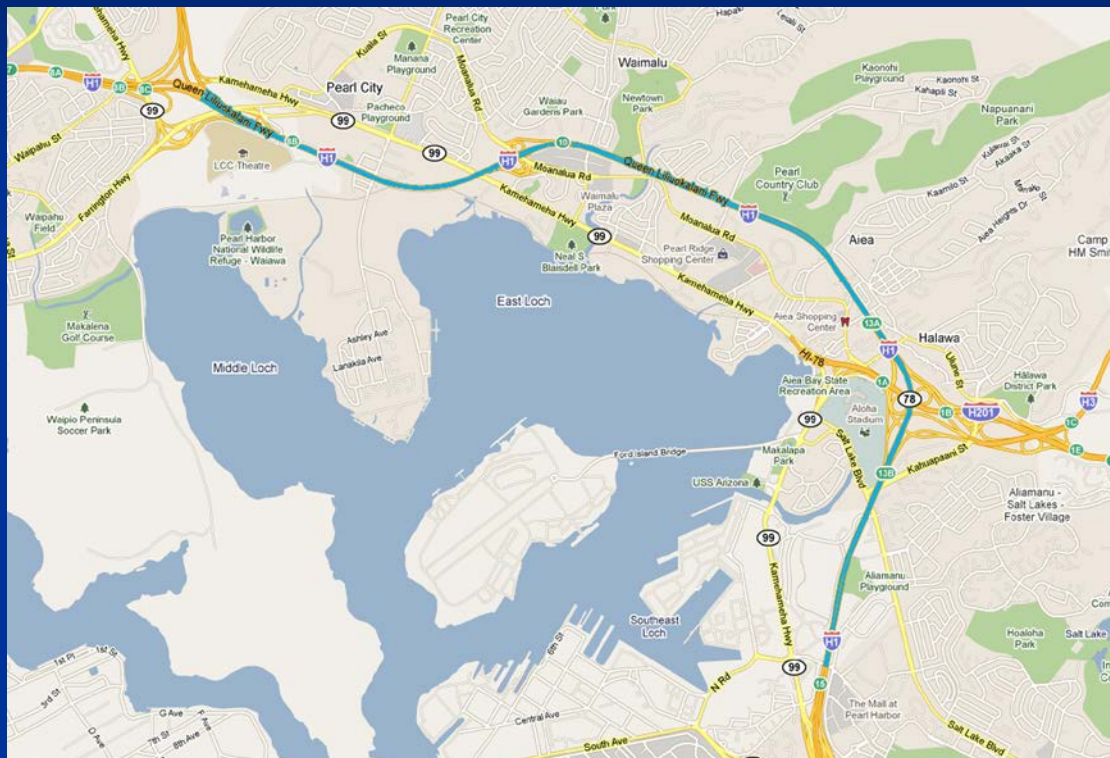
### ■ System Preservation

- Aiea Stream Erosion Control
- Slope Improvements for Erosion Control at Various Sites on Oahu, Phase 7
- Slope Improvements for Erosion Control at Various Sites on Oahu, Phase 6
- Central Oahu Best Management Practices, Eroded Slope Repairs, Phase 2
- Interstate Route H-1, Shoulder Work and Portland Cement Concrete Pavement Rehabilitation, Vicinity of Waimalu Viaduct to Vicinity of Halawa (Design-Build)
- Interstate Route H-1, H-2 and H201, Destination Sign Upgrade/Replacement, Phase 2
- Interstate Routes H-1 & H201 Resurfacing, Halawa Interchange to (H-1) Aiea Heights Drive Overpass
- Middle Street Pavement Reconstruction, North King Street to Kamehameha Highway



## *Highways Division – Oahu*

# Interstate Route H-1, Shoulder Work and Portland Cement Concrete Pavement Rehabilitation, Vicinity of Waimalu Viaduct to Vicinity of Halawa



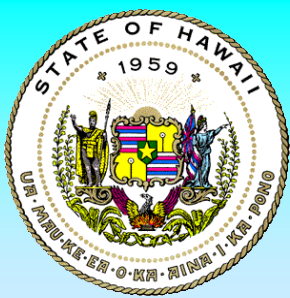
## **DESIGN-BUILD PROJECT**

### **SCOPE**

Portland Cement Concrete (PCC) pavement rehabilitation that includes replacing existing eastbound 10' shoulder with a minimum 24' wide PCC pavement shoulder that will allow 24/7 vehicular traffic loads  
Highway lighting, guardrail, drainage system, retaining wall system, traffic signs

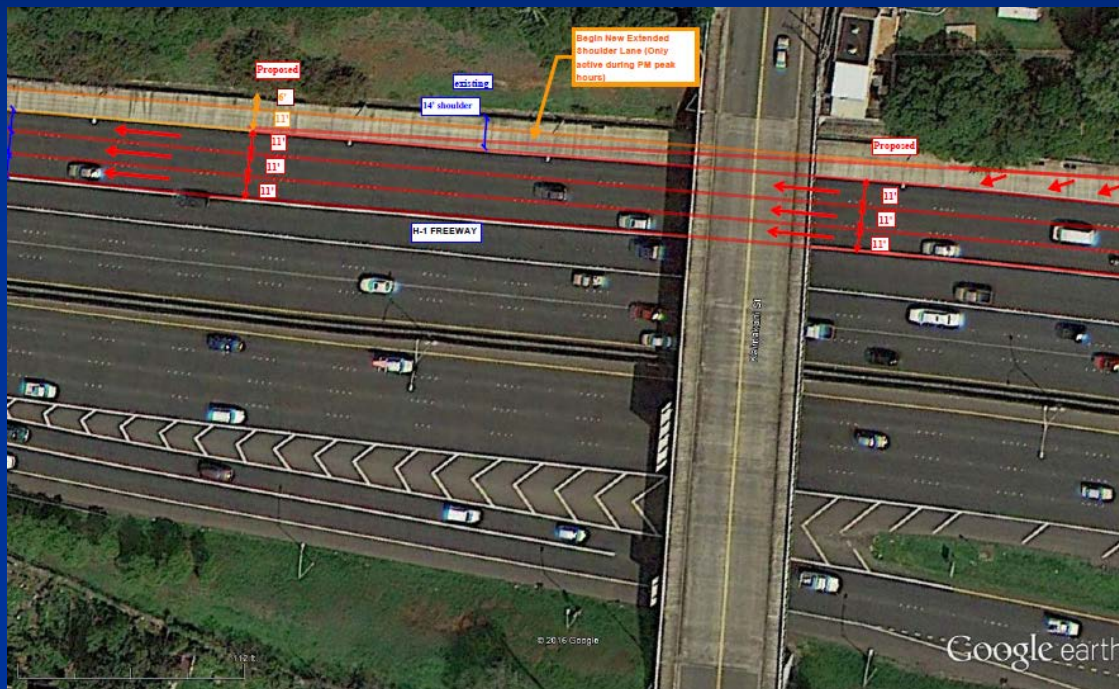
### **CONTRACT AMOUNT**

**\$60 Million**



# Highways Division – Oahu

## Interstate Routes H-1 and H-201 Resurfacing, Halawa Interchange to (H-1) Aiea Heights Drive Overpass



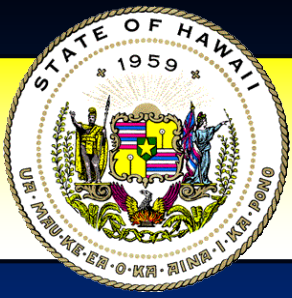
### SCOPE

Resurfacing of all Westbound lanes on H201 and H-1 Freeway from the Halawa offramp to the Aiea Heights Drive overpass  
Reconstruction of shoulders  
Relocation and replacement of guardrails  
Reconfiguration of pavement markings to create a third westbound lane going to H-1

### ESTIMATED COST

\$4 Million



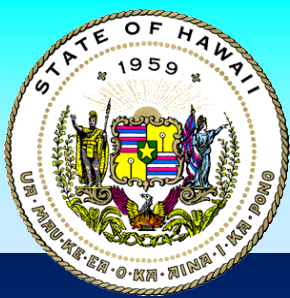


Aiea-Pearl City Town Meeting

## PROJECTS IN CONSTRUCTION

### ■ Safety

- Guardrail and Shoulder Improvements at Various Locations, Oahu
- Interstate Route H-1, Guardrail and Shoulder Improvements, Middle Street to Punchbowl Off-Ramp
- Interstate Route H-2 and Moanalua Freeway, Guardrail and Shoulder Improvements



*Highways Division – Oahu*  
**Interstate Route H-2 and Moanalua Freeway,  
Guardrail and Shoulder Improvements**

INDEX TO DRAWINGS	
SHEET NO.	DESCRIPTION
1	TITLE SHEET
2	STANDARD PLAN SUMMARY
3	GENERAL NOTES & LEGEND
4 - 6	WATER POLLUTION & EROSION CONTROL NOTES
7 - 8	HECO NOTES
9 - 11	GUARDRAIL & SHOULDER SCHEDULE
12 - 13	TYPICAL SECTIONS
14 - 25	GUARDRAIL DETAILS
26 - 69	ROADWAY PLANS
70 - 121	STRUCTURAL PLANS
122 - 134	DRAINAGE PLANS
135 - 185	TRAFFIC PLANS
186 - 193	LANDSCAPING PLANS

# STATE OF HAWAII

## DEPARTMENT OF TRANSPORTATION

### HIGHWAYS DIVISION

#### HONOLULU, HAWAII

## PLANS FOR

# INTERSTATE ROUTE H-2

# AND MOANALUA FREEWAY

## GUARDRAIL AND SHOULDER IMPROVEMENTS

## FEDERAL AID PROJECT NO. IM-STP-0300(106)

DISTRICTS OF EWA AND WAHIAWA  
ISLAND OF OAHU

FILE NO.	EST. NO.	STATE	FEED NO.	FEED NO.	FEED NO.	SHEET NO.	TOTAL SHEETS
HAWAII	HAWAII	IM-STP-0300(106)	2017	1	193		

**LOCATION PLAN**  
LENGTH OF PROJECT.....0.39 MILES  
SCALE IN THOUSAND FEET

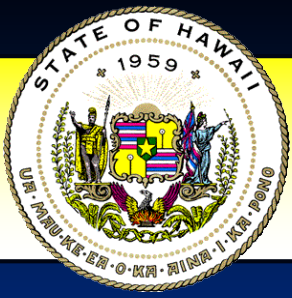
**LOCATION PLAN**  
LENGTH OF PROJECT.....0.74 MILES  
SCALE IN THOUSAND FEET

	INTERSTATE ROUTE H-2		ROUTE 78	
	Width (ft)	Width (ft)	Width (ft)	Width (ft)
ADT (2015)	97,900	73,000	49,700	
ADT (2028)	123,800	85,900	57,000	
DHV	9,300	8,870	3,900	
K	7.5	8.0	7.0	
D	65/35	55/45	80/20	
T	3.0	2.5	4.5	
T24	2.5	3.0	3.5	

DEPARTMENT OF TRANSPORTATION  
STATE OF HAWAII

APPROVED: \_\_\_\_\_

DATE: \_\_\_\_\_

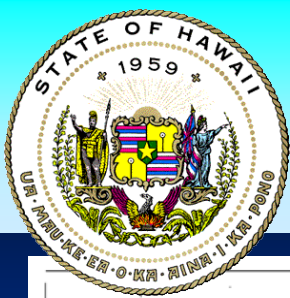


Aiea-Pearl City Town Meeting

## PROJECTS IN CONSTRUCTION

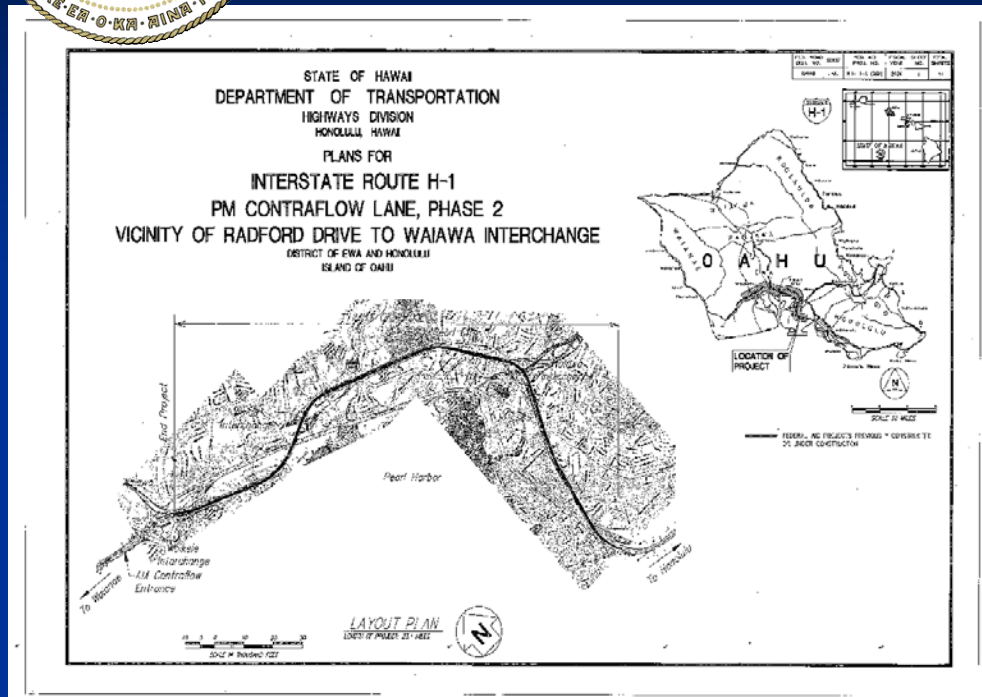
### ■ Operations

- Interstate Route H-1, PM Contraflow Lane, Phase 2, Vicinity of Radford Drive to Waiawa Interchange
- CDL & Motorcycle License Testing Facility, Examination Site & Office Renovation, Beneath Interstate Route H-1, Pearl City Viaduct



## Highways Division – Oahu

# Interstate Route H-1, PM Contraflow Lane, Phase 2, Vicinity of Radford Drive to Waiawa Interchange



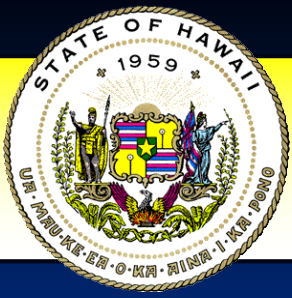
## SCOPE

This project provided an additional lane on H-1 westbound from Halawa to Waipahu

## EST. COST

Phase II - \$82 Million

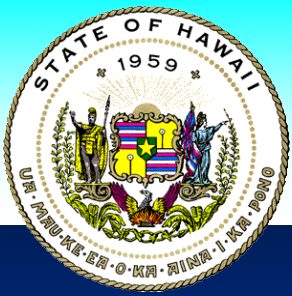




Aiea-Pearl City Town Meeting

## PROJECTS IN CONSTRUCTION

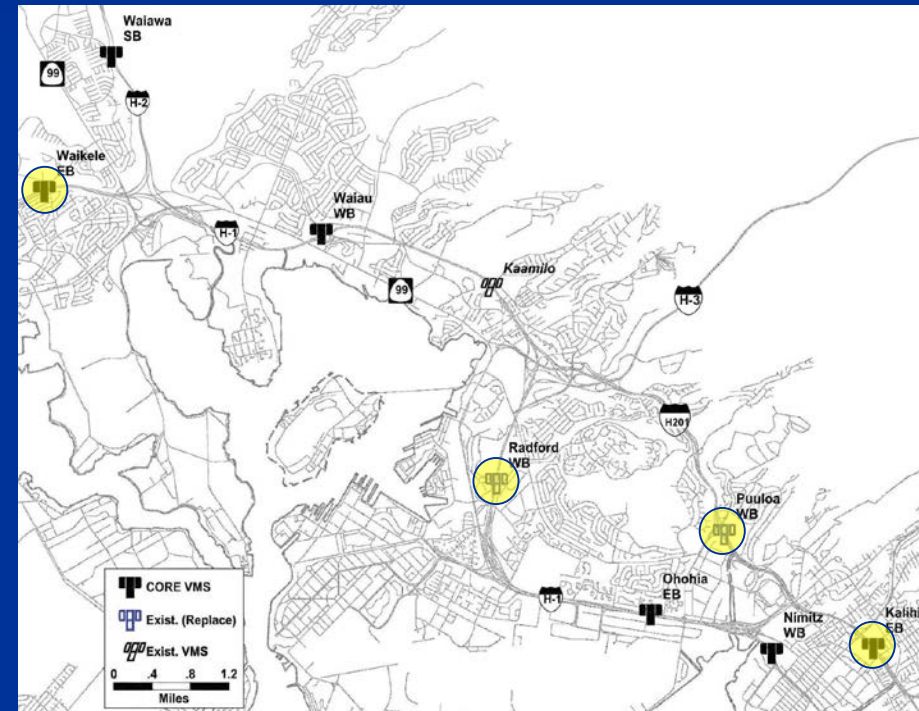
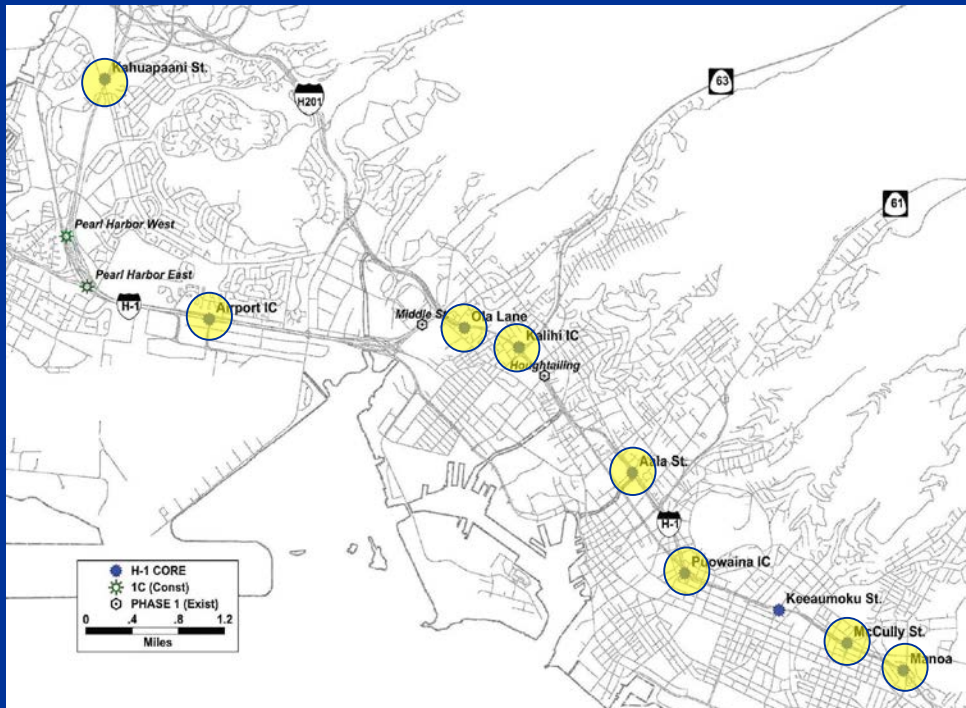
- **Intelligent Transportation Systems (ITS)**
  - Freeway Management System, Interstate Route H-1, H-2, & Moanalua Freeway, Phase 1C, Part 2
  - Freeway Management System, Phase 1C, Part 3A Data Expansion, Various Locations

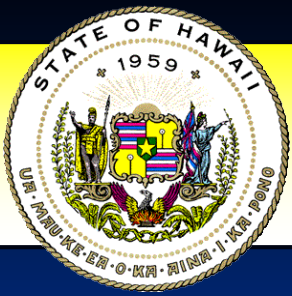


## Highways Division

# Advanced Traveler Information System

- Expansion of traveler information to include additional traffic cameras and Dynamic Message Signs on the H-1 and H-201 Freeways



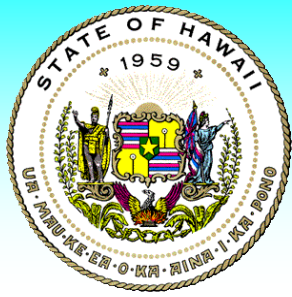


## Aiea-Pearl City Town Meeting

# PROJECTS IN DESIGN

### ■ System Preservation

- Interstate Route H-1 and H-201, Destination Sign Upgrade/Replacement, Phase 3
- Interstate Route H-1, Highway Lighting Improvements, Kaimakani Overpass to Middle Street, Phase 1
- Drainage Improvements at Various Locations, Interstate Route H-201, Vicinity of Fort Shafter Off-ramp, and Ala Napunani Street, Vicinity of Ala Aolani Street
- Moanalua Freeway, Highway Lighting Improvements, Halawa Heights Off-Ramp to Middle Street Overpass
- Moanalua Freeway, Highway Lighting Improvements, Halawa to H-3 Freeway Overpass



## Highways Division-Oahu

# Moanalua Freeway, Highway Lighting Improvements, Halawa Heights Off-Ramp to Middle Street Overpass



© 2002 Microsoft Corp. All rights reserved.

### **SCOPE**

Upgrade the lighting on the Moanalua Freeway, between the Halawa Heights Off-Ramp to Middle Street Overpass, to meet current State, AASHTO and Federal standards.

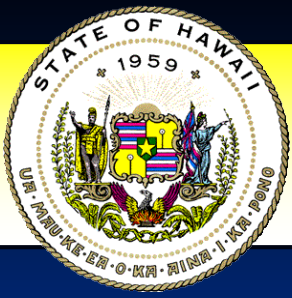
### **EST. COST**

\$9 Million

### **EST. SCHEDULE**

Est. RTA Feb 2018





## Aiea-Pearl City Town Meeting

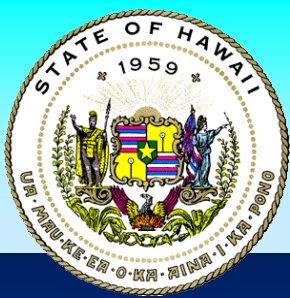
# PROJECTS IN DESIGN

### ■ Safety

- Interstate Route H-1 Safety Improvements, Beginning of H-1 to Waiawa Overpass

### ■ Environmental Compliance

- Slope Improvements for Erosion Control at Various Sites on Oahu, Phase 8
- Interstate Route H-3, Units IV, Interpretive Development Plan



# Highways Division – Oahu

## Interstate Route H-1 Safety Improvements, Beginning of H-1 to Waiawa Overpass



### **SCOPE**

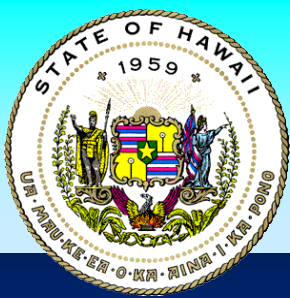
Shoulder rehabilitation  
Upgrading guardrail endposts  
Drainage improvements on shoulder  
Improvements to Makakilo on-ramp

### **CONTRACT AMOUNT**

\$4 Million

### **EST. RTA**

July 2018



# *Highways Division – Oahu*

## **Slope Improvements for Erosion Control at Various Sites on Oahu, Phase 8**



© 2002 Microsoft Corp. All rights reserved.

### **SCOPE**

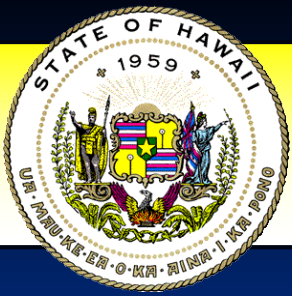
Clearing Vegetation  
Demolition and Removal of  
existing concrete ditch  
Installation of new drainage  
culverts  
Installation of new concrete  
baffle box  
Installation of grouted rip rap

### **CONTRACT AMOUNT**

**\$3.8 Million**

### **EST. RTA**

**May 2018**



## Aiea-Pearl City Town Meeting

# PROJECTS IN DESIGN

### ■ ITS

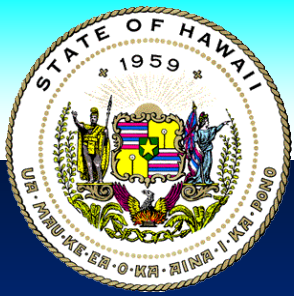
- Freeway Management System, Phase 2A

### ■ Enhancement

- Leeward Bikeway, Phase 1, Waipio Point Access Rd to Hawaii Railroad Society Train Station

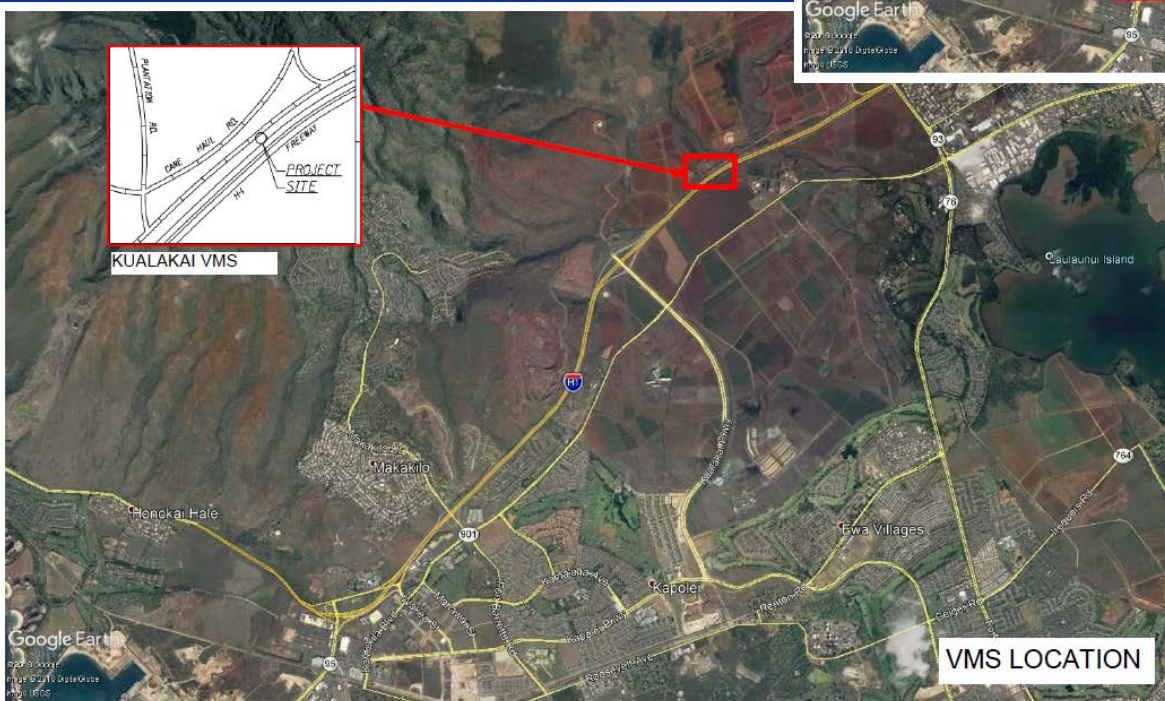
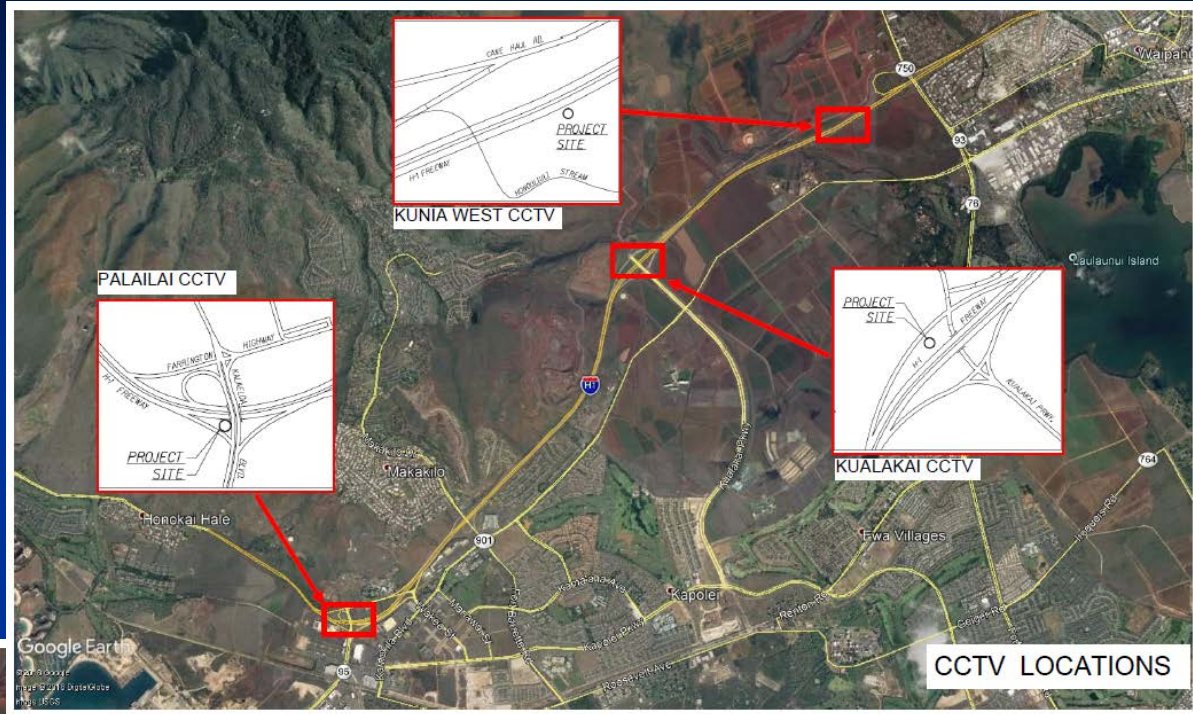
### ■ Capacity

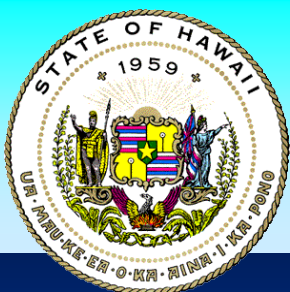
- Interstate Route H-1 Widening, Eastbound, Vicinity of Waikele to Vicinity of Halawa



## Highways Division

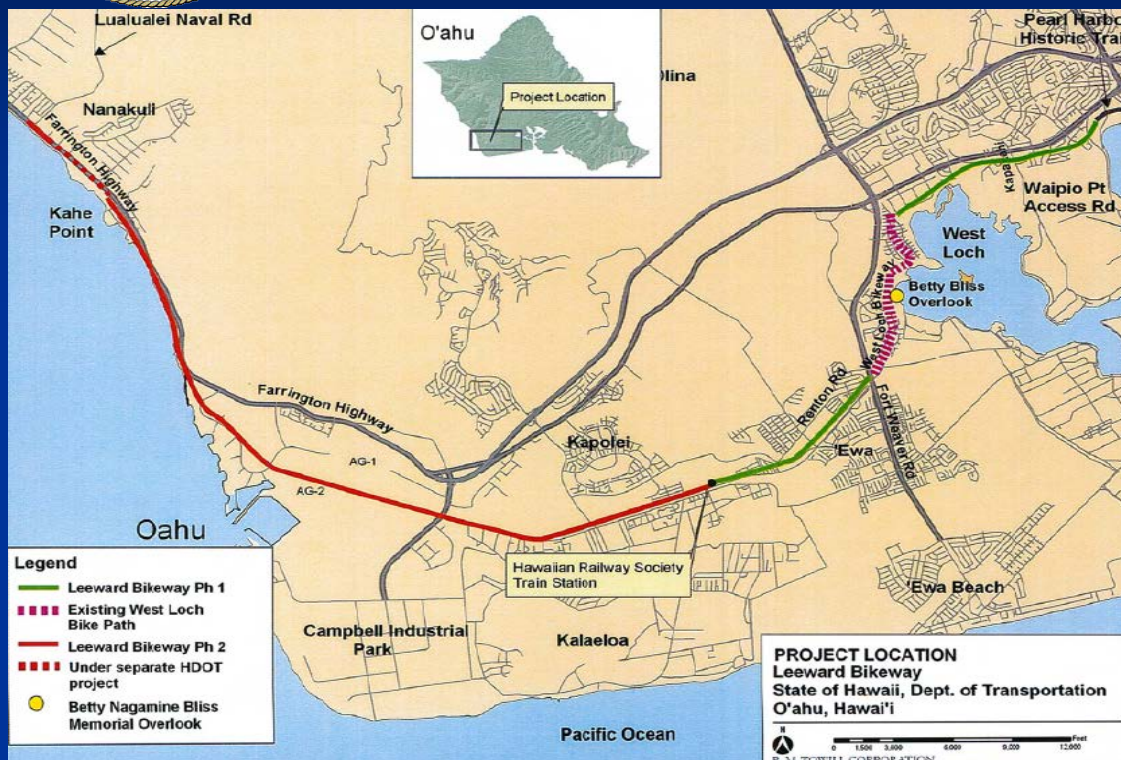
# New Traffic Cameras and DMS (Under Design)





## Highways Division – Oahu

# Leeward Bikeway, Phase 1, Waipio Point Access Rd to Hawaii Railroad Society Train Station



## SCOPE

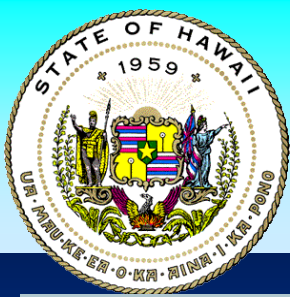
Construct 10 foot wide asphalt concrete bike path with 2 foot shoulders

## CONTRACT AMOUNT

\$9.8 Million

## EST. RTA

June 2018



## Highways Division – Oahu

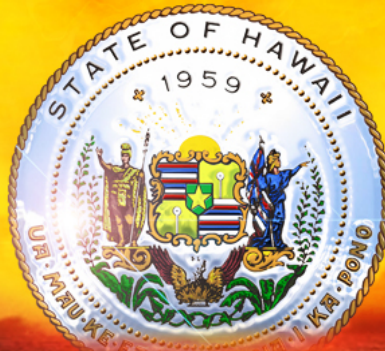
# Interstate Route H-1 Widening, Eastbound, Vicinity of Waikēle to Vicinity of Halawa



© 2002 Microsoft Corp. All rights reserved.



# Mahalo!



**State of Hawaii**  
**Department of Transportation**

