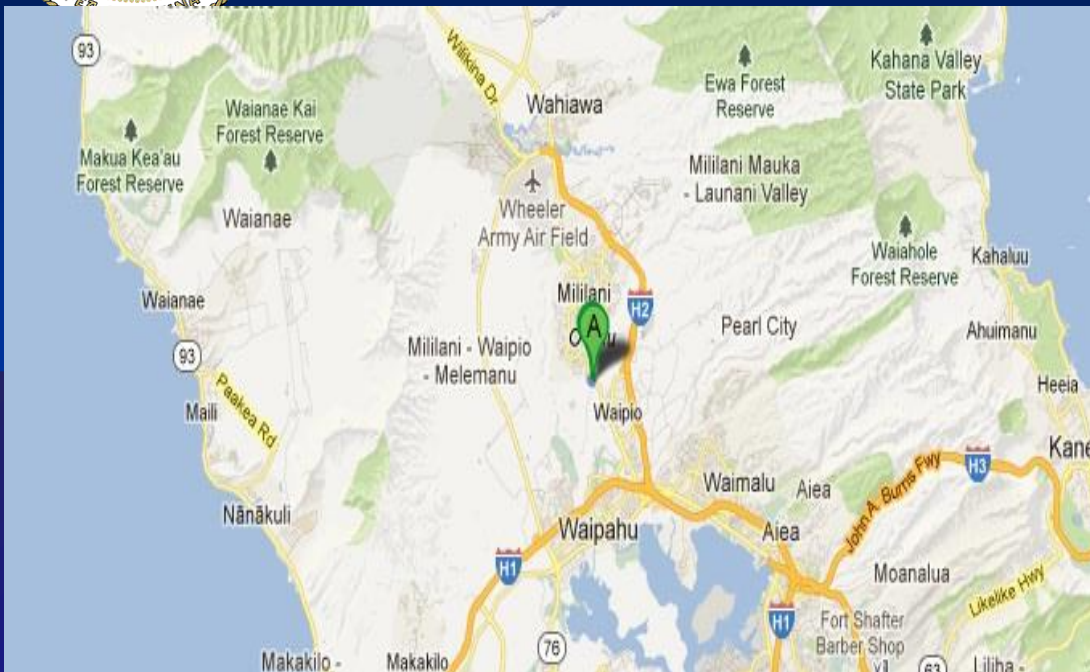


Highways Division – Oahu

Kamehameha Hwy - Rehabilitation of Kipapa Stream Bridge (a.k.a. Franklin D. Roosevelt Bridge)



SCOPE

Rehabilitate the existing bridge to meet current HDOT and AASHTO standards for geometrics, Bridges, lighting, etc.

Contract Amount

\$ 14.925 Million

EST. SCHEDULE

Anticipate completion July 2018

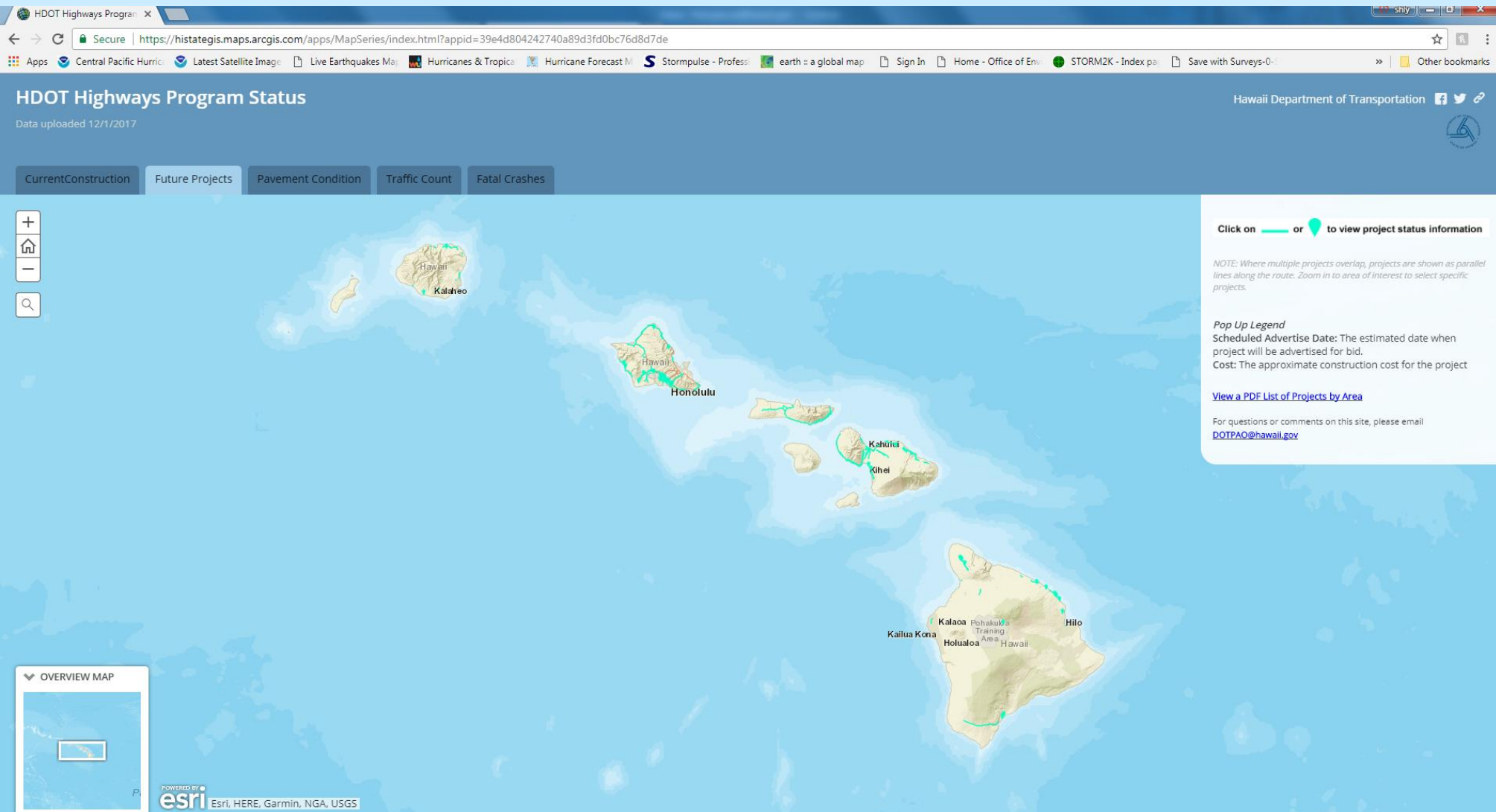


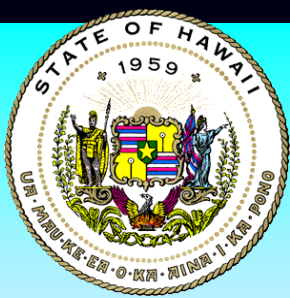


Highways Division

HDOT Highways Program Status

<https://histategis.maps.arcgis.com/apps/MapSeries/index.html?appid=39e4d804242740a89d3fd0bc76d8d7de>

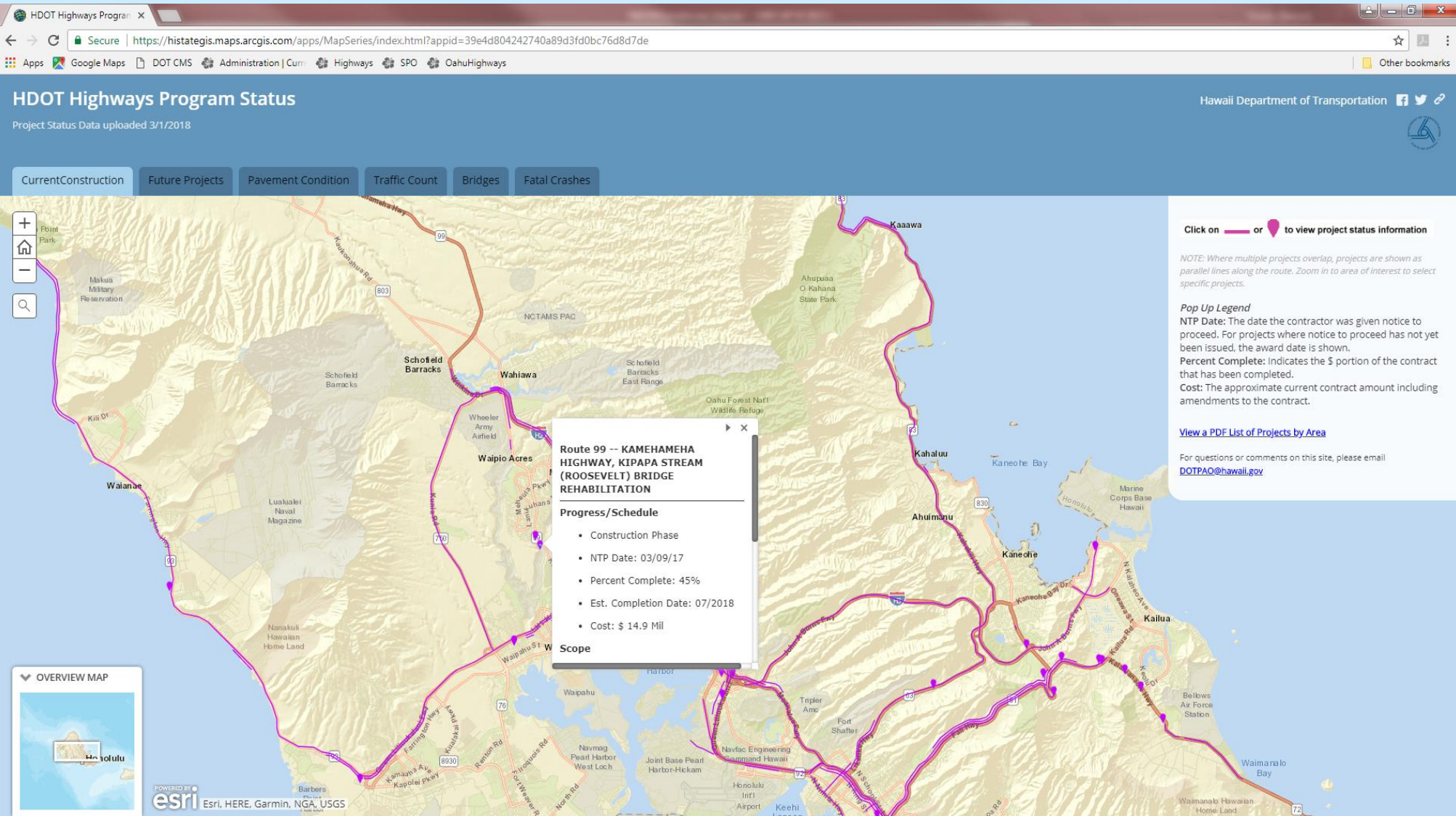


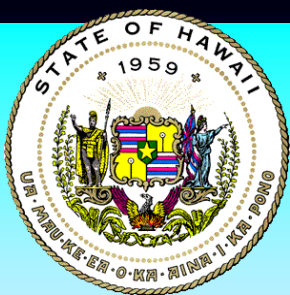


Highways Division

HDOT Highways Program Status

<https://histategis.maps.arcgis.com/apps/MapSeries/index.html?appid=39e4d804242740a89d3fd0bc76d8d7de>






Highways Division

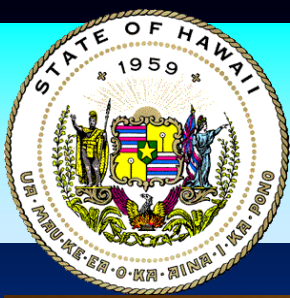
HDOT Highways Program Status

<https://histategis.maps.arcgis.com/apps/MapSeries/index.html?appid=39e4d804242740a89d3fd0bc76d8d7de>



Project Status For Oahu, Central

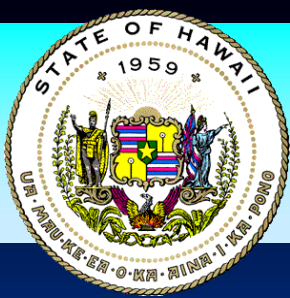
Project Information	Limits of Construction	Scope	Progress/Schedule
KAMEHAMEHA HIGHWAY, KIPAPA STREAM (ROOSEVELT) BRIDGE REHABILITATION Project Number: BR-099-1(030) Phase: Construction Point of Contact: MATTHEW MORITA matthew.s.morita@hawaii.gov	 Mileposts: 14.42 to 14.51	REHABILITATING AND WIDENING KIPAPA STREAM BRIDGE. REVIEWING OPPORTUNITIES TO ENHANCE BIKE AND PEDESTRIAN ACCESS ADJACENT TO BRIDGE.	NTP Date: 3/9/2017 Percent Complete: 45% Construction Cost \$ 14.9 Mil Est End Date: 07/2018 Contractor: HAWAIIAN DREDGING CONSTRUCTION COMPANY, INC.



Highways Division – Oahu

Kamehameha Hwy - Rehabilitation of Kipapa Stream Bridge (a.k.a. Franklin D. Roosevelt Bridge)

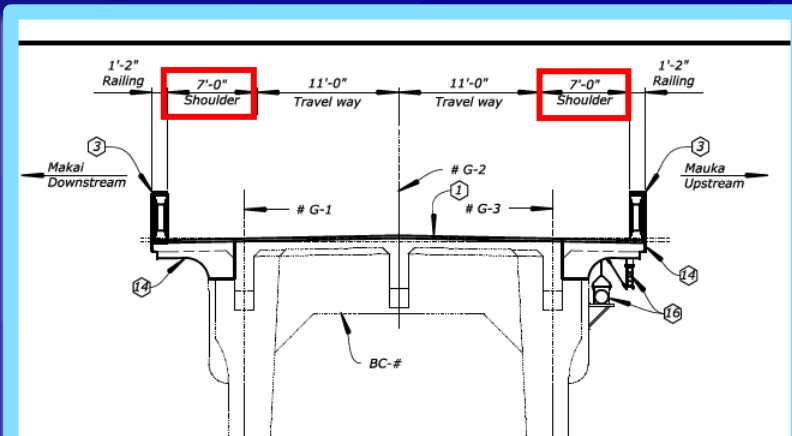


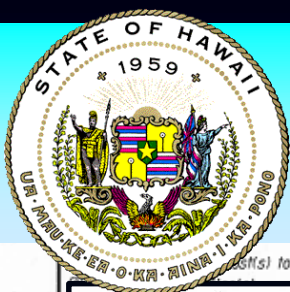


Highways Division – Oahu

Kamehameha Hwy - Rehabilitation of Kipapa Stream Bridge (a.k.a. Franklin D. Roosevelt Bridge)

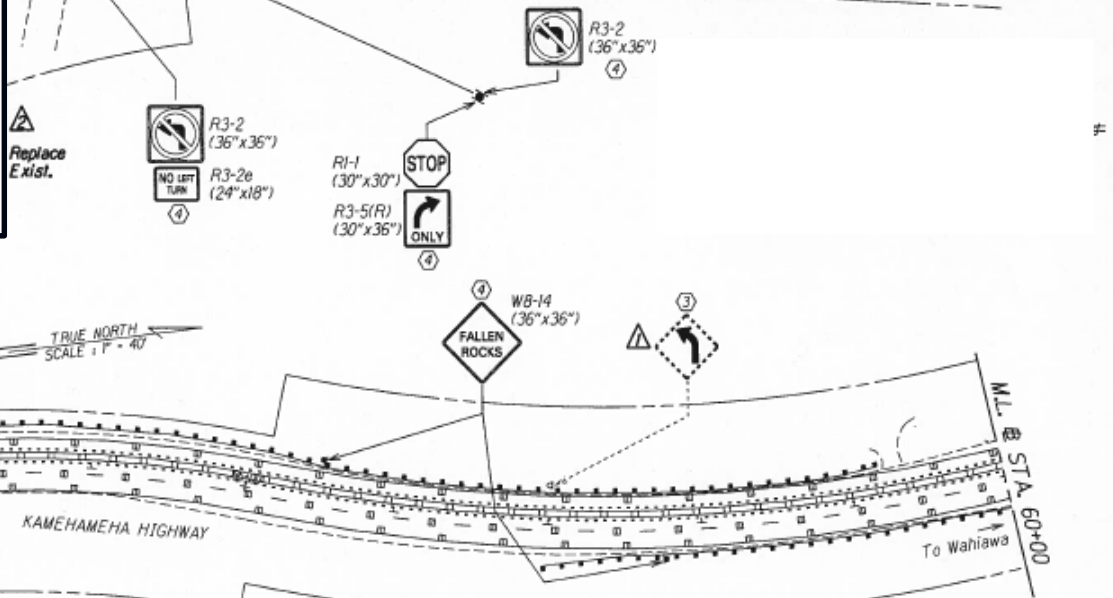
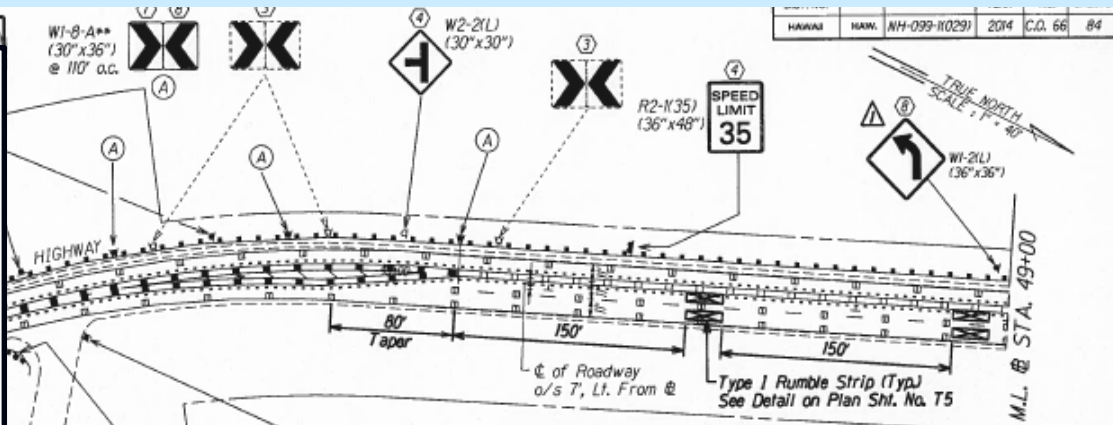
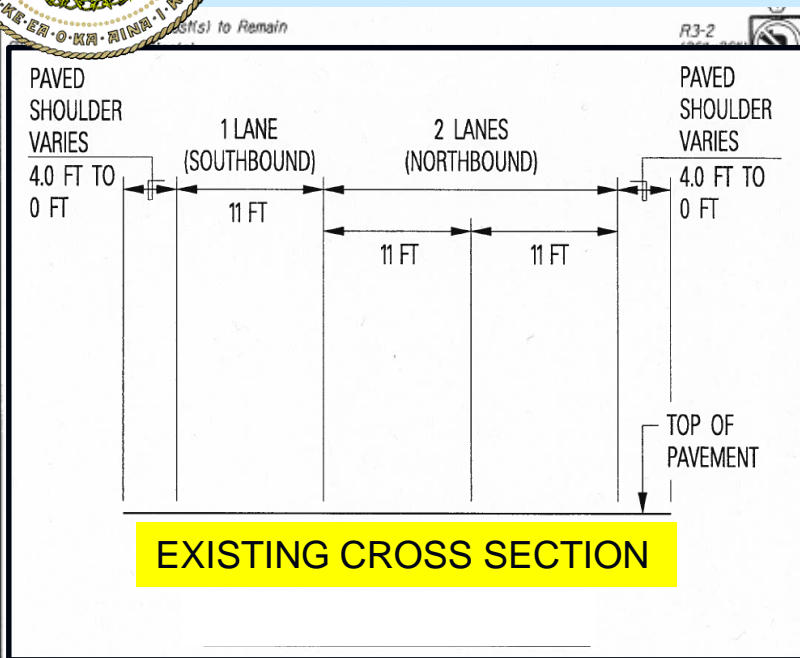






Highways Division – Oahu

Kamehameha Hwy - Rehabilitation of Kipapa Stream Bridge (a.k.a. Franklin D. Roosevelt Bridge)



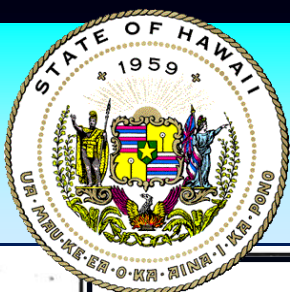
- Three (3) 11 ft. lanes with no median.
- 0-4 ft. shoulders on both sides.

Existing

DESIGNED BY	DATE
DRAWN BY	DATE
CHECKED BY	DATE
IN CHARGE BY	DATE

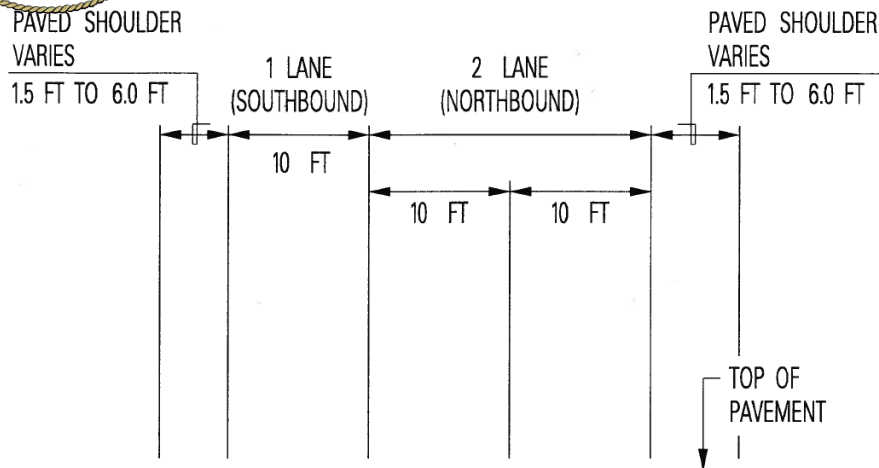
DATE	REVISION
11/12/12	Revised Pav. Markings & Signs to 2 Lanes
1/15/14	Relocate Exist. Curve Warning Sign Add Milepost Marker Add Type 1 Rumble Strip

STATE OF HAWAII DEPARTMENT OF TRANSPORTATION HIGHWAY DIVISION
PAVEMENT MARKING & SIGNING PLAN
KAMEHAMEHA HIGHWAY RESURFACING
Vicinity of Ka Uka Boulevard
to Vicinity of Waihiwa Street
Federal Aid Project No. NH-099-110291
Scale: 1" = 40' Date: Oct., 2015
SHEET No. T6 OF 24 SHEETS

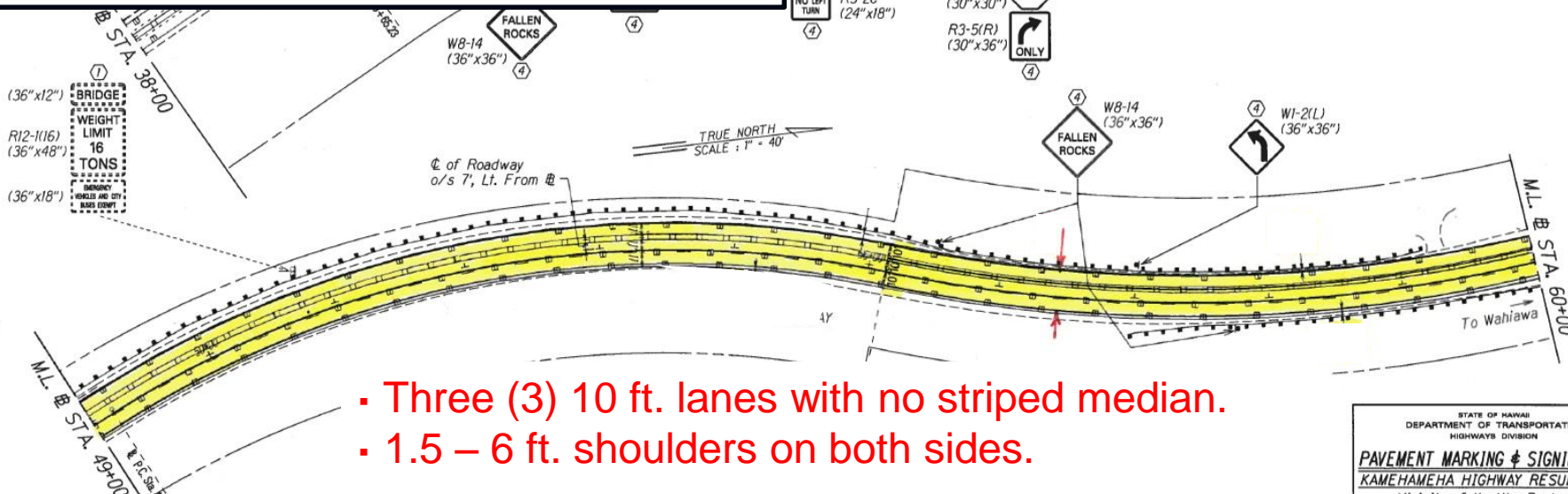


Highways Division – Oahu

Kamehameha Hwy - Rehabilitation of Kipapa Stream Bridge (a.k.a. Franklin D. Roosevelt Bridge)



OPTION B CROSS SECTION



- Three (3) 10 ft. lanes with no striped median.
- 1.5 – 6 ft. shoulders on both sides.

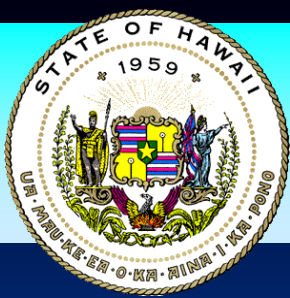
Option B – Reduce Lane Width

FED. ROAD DIST. NO.	STATE	FED. AID PROJ. NO.	FISCAL YEAR	SHEET NO.	TOTAL SHEETS
HAWAII	HAW.	NH-099-110291	2014	X	X

STATE OF HAWAII
DEPARTMENT OF TRANSPORTATION
HIGHWAYS DIVISION

PAVEMENT MARKING & SIGNING PLAN
KAMEHAMEHA HIGHWAY RESURFACING
Vicinity of Ka Uka Boulevard
to Vicinity of Waihiwa Street
Federal Aid Project No. NH-099-110291
Scale: 1" = 40' Date: June 2013

SHEET No. T6 OF 0 SHEETS



Highways Division – Oahu

Kamehameha Highway (Route 99)

Travel Time Demo Project

INTRODUCTION

Travel time and delay are two of the principal measures of highway system performance used by traffic engineers, planners and analysts. They provide input to capacity analyses of roadway segments.

PURPOSE

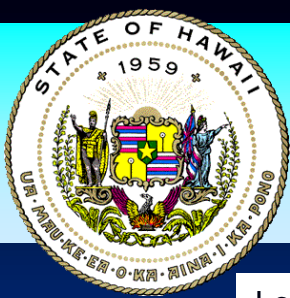
To conduct a travel time study and determine the travel time after reducing the northbound throughway from two lanes to one lane (and comparing that to the existing condition travel time).

The result will help with our determination on whether to increase the shoulder and median.

EXISTING CONDITION

The demonstration area starts north of the Kipapa Stream bridge and ends near the intersection of Kamehameha Highway and Lanikuhana Avenue.

The existing lane configuration is 1 southbound lane and 2 northbound lanes, with shoulder width varying from zero to 4 feet. All lane widths are 11 feet.



Highways Division – Oahu

Kamehameha Highway (Route 99)

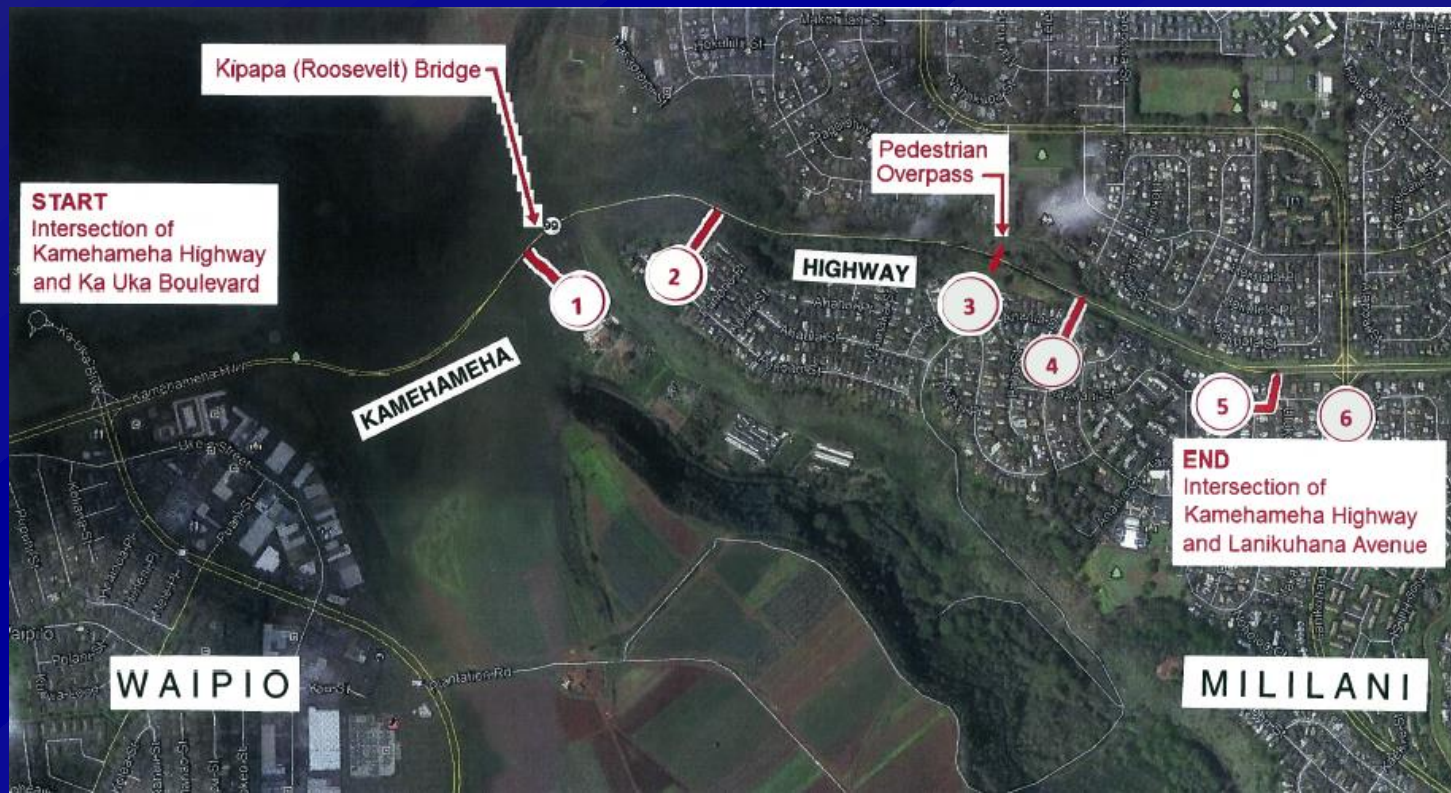
Travel Time Demo Project

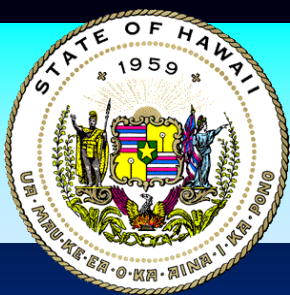
Location:

On April 4th traffic control cones will be placed on the roadway, closing one northbound (left) lane along Kamehameha Highway, from north of the Kipapa Stream Bridge (M.P. 14.45) to an area between the pedestrian overpass and the Lanikuhana Avenue intersection (M.P. 13.62). The total length of coning will be 0.83 miles.

Action Plan:

1. Wednesday, March 14th, base line data acquired, 3:30pm-6:00pm.
2. Monday, April 2nd, cones will be placed between 9am and 2pm.
3. Tuesday, April 3rd, driver acclimate to the new situation.
4. Wednesday, April 4th, collect data, 3:30pm-6:00pm.
5. Thursday, April 5th, collect data, 3:30pm-6:00pm and take down cones at 7pm.





Highways Division – Oahu

Kamehameha Highway (Route 99)

Travel Time Demo Project

DATA COLLECTION PROCEDURE:

At 3:30 pm, one test vehicle will enter the northbound route at the intersection of Kamehameha Highway and Ka Uka Boulevard. At this time the stop watch will be started.

There will be six northbound reference points where times will be taken, the last point being the intersection of Kamehameha Highway and Lanikuhana Avenue.

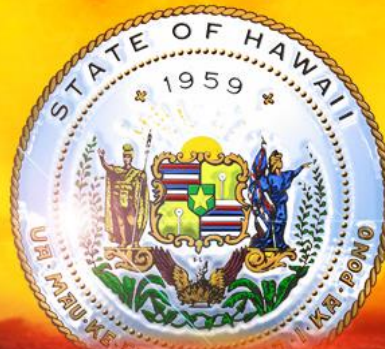
After passing the final northbound reference point, the test vehicle will turn around and start a new southbound time measurement at the intersection of Kamehameha Highway and Lanikuhana Avenue.

Southbound times will be taken at the same reference points as in the northbound direction. The southbound route will end at the intersection of Kamehameha Highway and Ka Uka Boulevard, where the test vehicle will prepare for the next pass.

One pass will be made every 15 minutes, and this will continue until 6:00 pm.

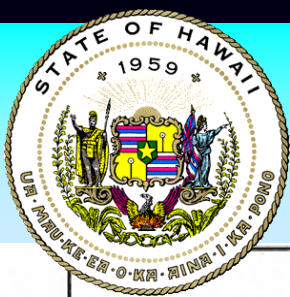
At the same start time of 3:30 pm, an individual stationed on the pedestrian overpass will begin taking vehicle counts and continue until 6:00 pm.

Mahalo!



State of Hawaii
Department of Transportation

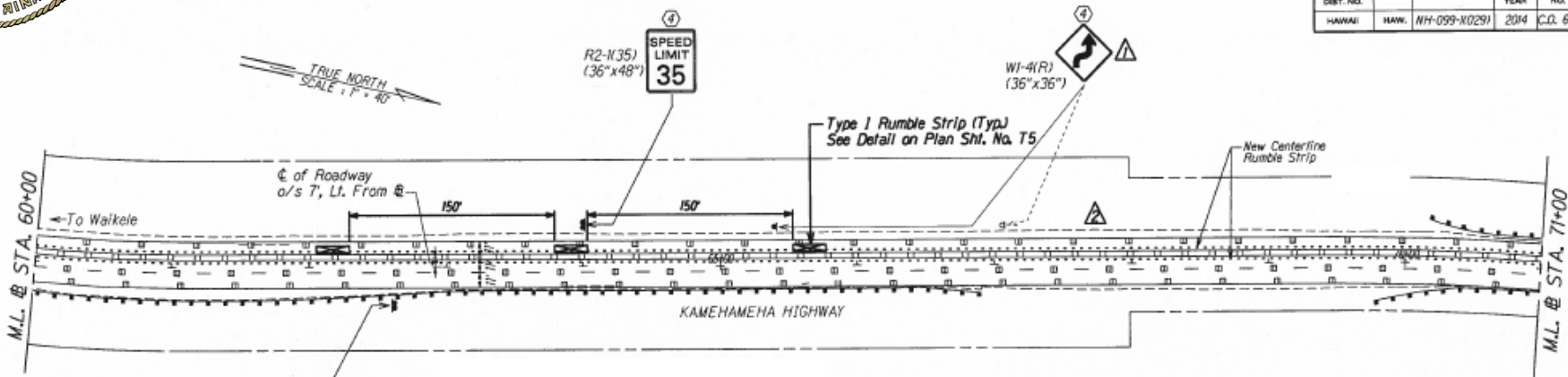




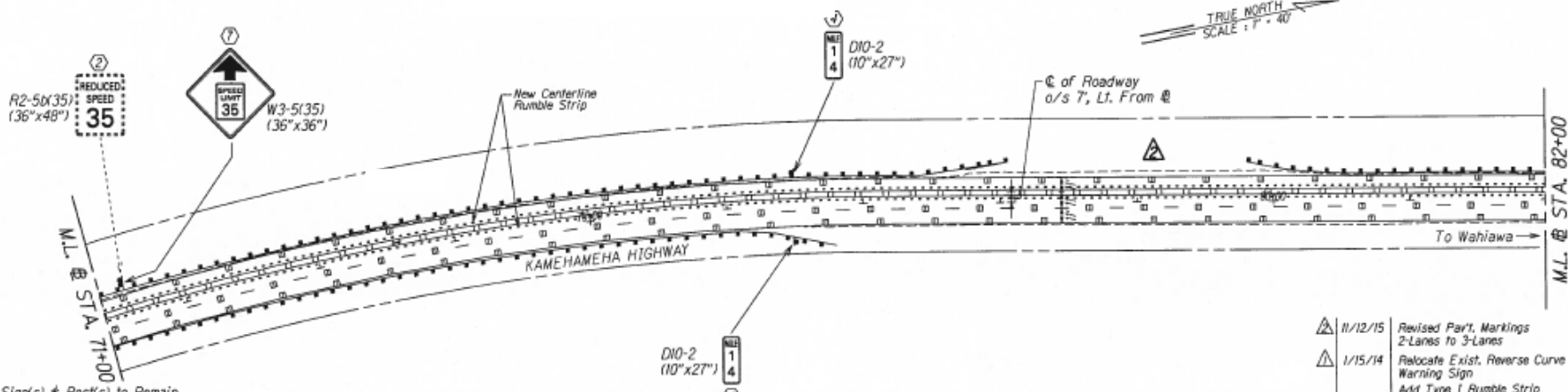
Highways Division – Oahu

Kamehameha Hwy - Rehabilitation of Kipapa Stream Bridge (a.k.a. Franklin D. Roosevelt Bridge)

FED. ROAD DIST. NO.	STATE	FED. AID PROJ. NO.	FISCAL YEAR	SHEET NO.	TOTAL SHEETS
HAWAII	HAW.	NH-099-N0291	2014	C.O. 67	86



From STA. 41+50 to STA. 86+70
Install RPM Centerline Rumble Strip for Undivided Highway;
See Detail "B" on Plan Sheet No. 11.



KEY:

- ① Exist. Sign(s) & Post(s) to Remain
- ② Remove Exist. Sign(s)
- ③ Remove Exist. Sign(s) w/ Post(s)
- ④ Remove Exist. Sign(s) w/ Post(s) & Install New Sign(s) w/ Post(s)
- ⑤ Remove Exist. Sign(s) & Install New Sign(s) on Exist. Hwy. Light Pole
- ⑥ Remove Exist. Sign(s) & Install New Sign(s) on Exist. Flashing Lt. Po
- ⑦ Install New Sign(s)
- ⑧ Install New Sign(s) & Post(s)
- ⑨ Remove Exist. Sign(s) & Install New Sign(s)

- Three (3) 11 ft. lanes with no median.
- 0-4 ft. shoulders on both sides.

Existing

Detail "A"
Undivided Highway

Detail "B"
Divided Highway

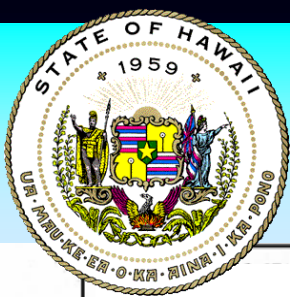
RPM CENTERLINE RUMBLE STRIP & MARKING DETAIL

Not to Scale

DATE	REVISION
11/12/15	Revised Part. Markings 2-Lanes to 3-Lanes
1/15/14	Relocate Exist. Reverse Curve Warning Sign Add Type I Rumble Strip

STATE OF HAWAII
DEPARTMENT OF TRANSPORTATION
HIGHWAYS DIVISION
PAVEMENT MARKING & SIGNING PLAN
KAMEHAMEHA HIGHWAY RESURFACING
Vicinity of Ka Uka Boulevard
to Vicinity of Waihau Street
Federal Aid Project No. NH-099-N0291
Scale: 1" = 40' Date: Oct. 2015

SHEET No. 17 OF 24 SHEETS



Highways Division – Oahu

Kamehameha Hwy - Rehabilitation of Kipapa Stream Bridge (a.k.a. Franklin D. Roosevelt Bridge)

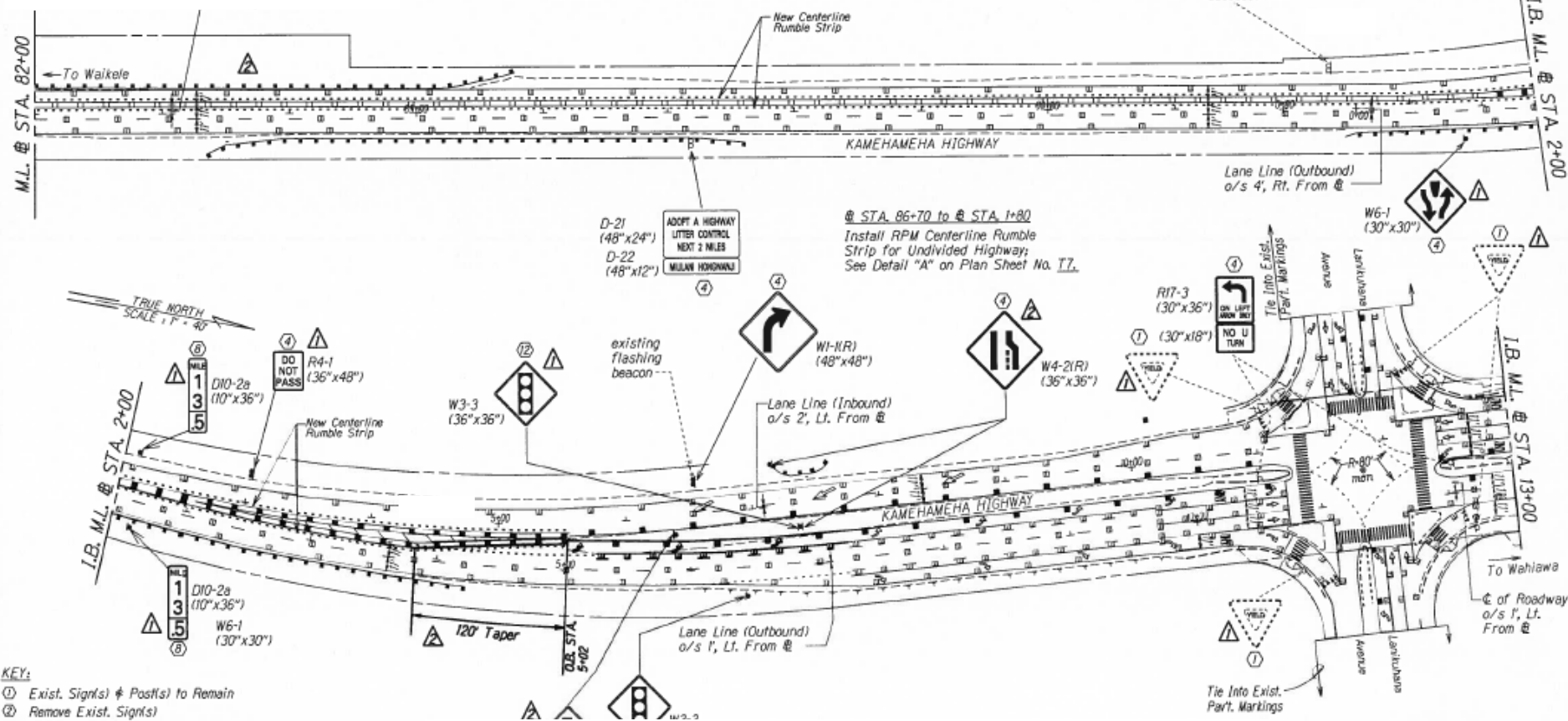
Sta. 41+50 to Sta. 86+70

Install RPM Centerline Rumble Strip for Undivided Highway;
See Detail "B" on Plan Sheet No. T7.

TRUE NORTH
SCALE: 1" = 40'

BRIDGE
WEIGHT
LIMIT
16
TONS
DANGER
VEHICLE AND TRAILER
OVERLOAD

FED. ROAD DIST. NO.	STATE	FED. AID PROJ. NO.	FISCAL YEAR	SHEET NO.	TOTAL SHEETS
HAWAII	HAW.	NH-099-110291	2014	C.O. 68	84



- KEY:**
- ① Exist. Sign(s) & Post(s) to Remain
 - ② Remove Exist. Sign(s)
 - ③ Remove Exist. Sign(s) w/ Post(s)
 - ④ Remove Exist. Sign(s) w/ Post(s) & Install New Sign(s) w/ Post(s)
 - ⑤ Remove Exist. Sign(s) & Install New Sign(s) on Exist. Hwy. Light 1
 - ⑥ Remove Exist. Sign(s) & Install New Sign(s) on Exist. Flashing Lt.
 - ⑦ Install New Sign(s)
 - ⑧ Install New Sign(s) & Post(s)

Light Pole
Signal Pole
New Location
Sign(s)

- Three (3) 11 ft. lanes with no median.
- 0-4 ft. shoulders on both sides.

Existing

STATE OF HAWAII
DEPARTMENT OF TRANSPORTATION
HIGHWAYS DIVISION

PAVEMENT MARKING & SIGNING PLAN

KAMEHAMEHA HIGHWAY RESURFACING
Vicinity of Ka Uka Boulevard
to Vicinity of Waihau Street

Federal Aid Project No. NH-099-110291
Scale: 1" = 40' Date: Oct. 2013

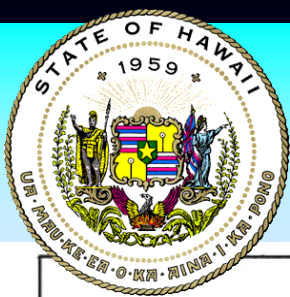
3-Lanes

DATE: 1/15/14

REVISION: Relocate Exist. Signs
Add/Revise Sign Key Callout
Add Milepost Marker

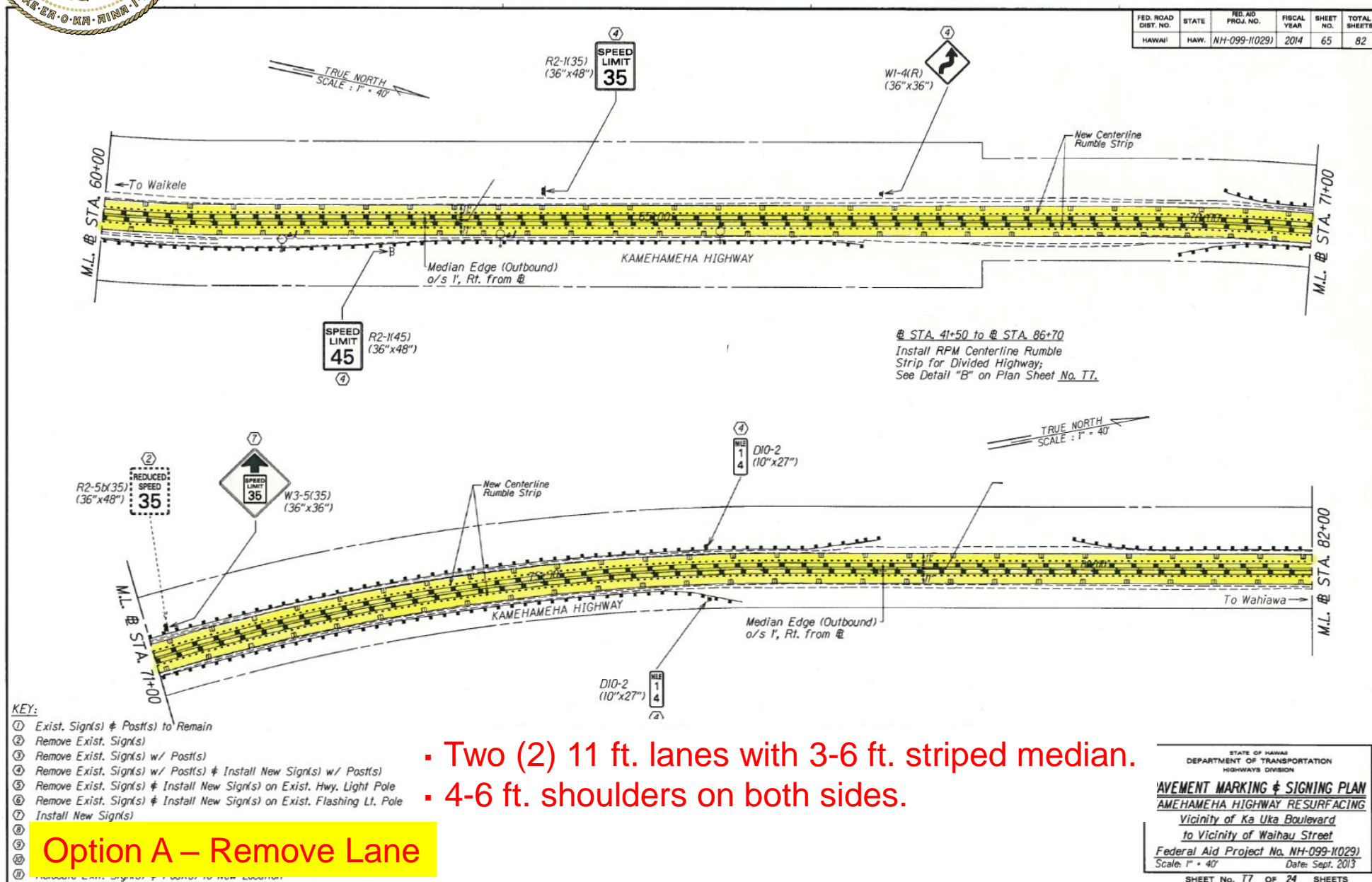
SHEET No. 78 OF 24 SHEETS

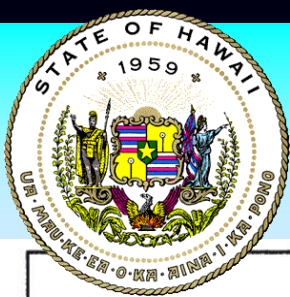
C.O. 68



Highways Division – Oahu

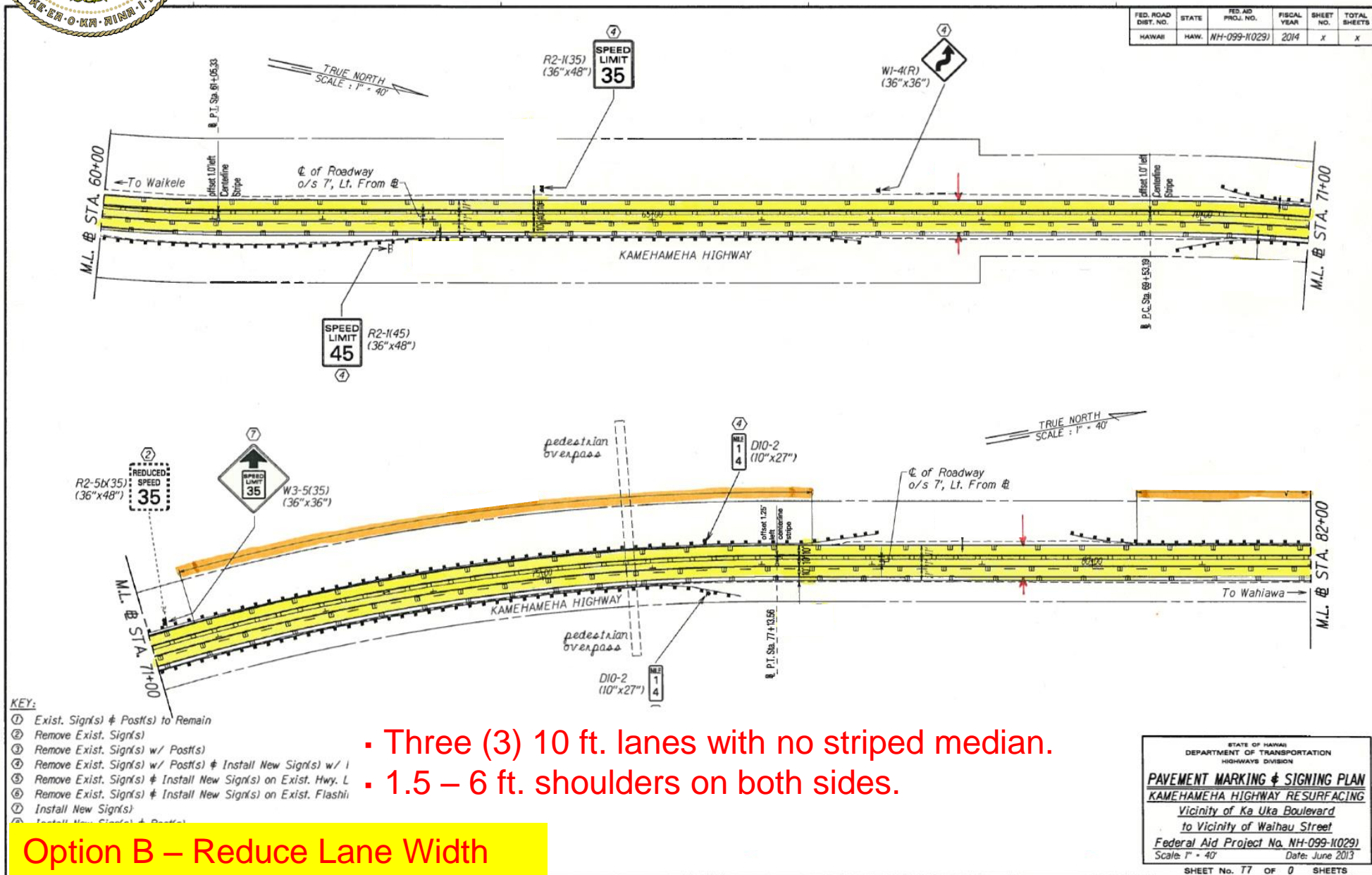
Kamehameha Hwy - Rehabilitation of Kipapa Stream Bridge (a.k.a. Franklin D. Roosevelt Bridge)



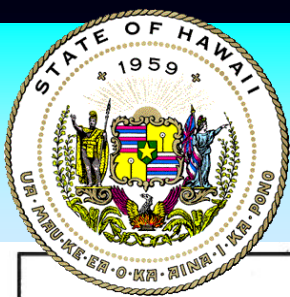


Highways Division – Oahu

Kamehameha Hwy - Rehabilitation of Kipapa Stream Bridge (a.k.a. Franklin D. Roosevelt Bridge)

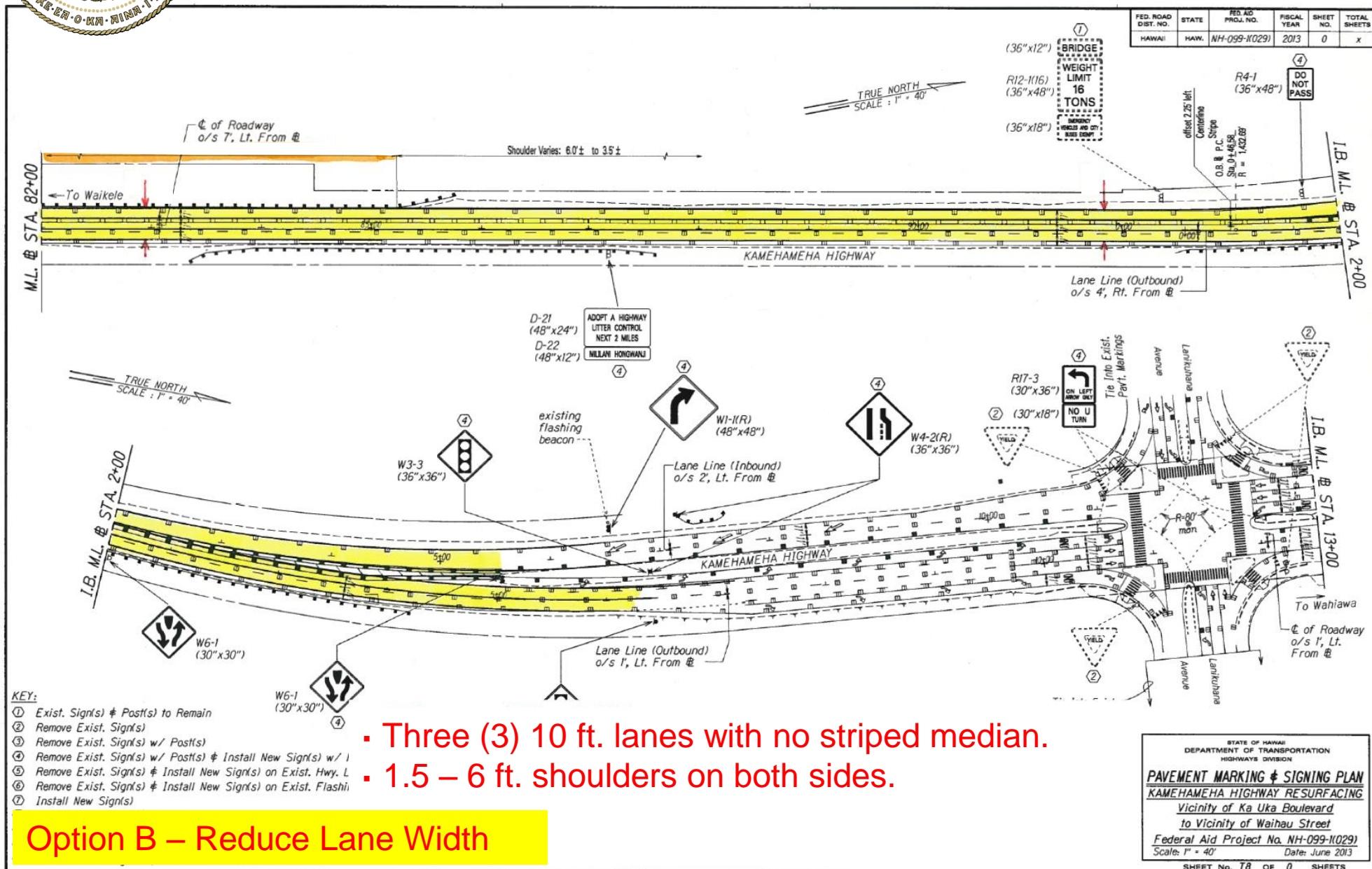


- Three (3) 10 ft. lanes with no striped median.
- 1.5 – 6 ft. shoulders on both sides.



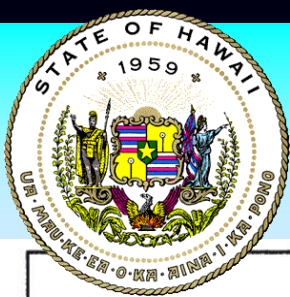
Highways Division – Oahu

Kamehameha Hwy - Rehabilitation of Kipapa Stream Bridge (a.k.a. Franklin D. Roosevelt Bridge)



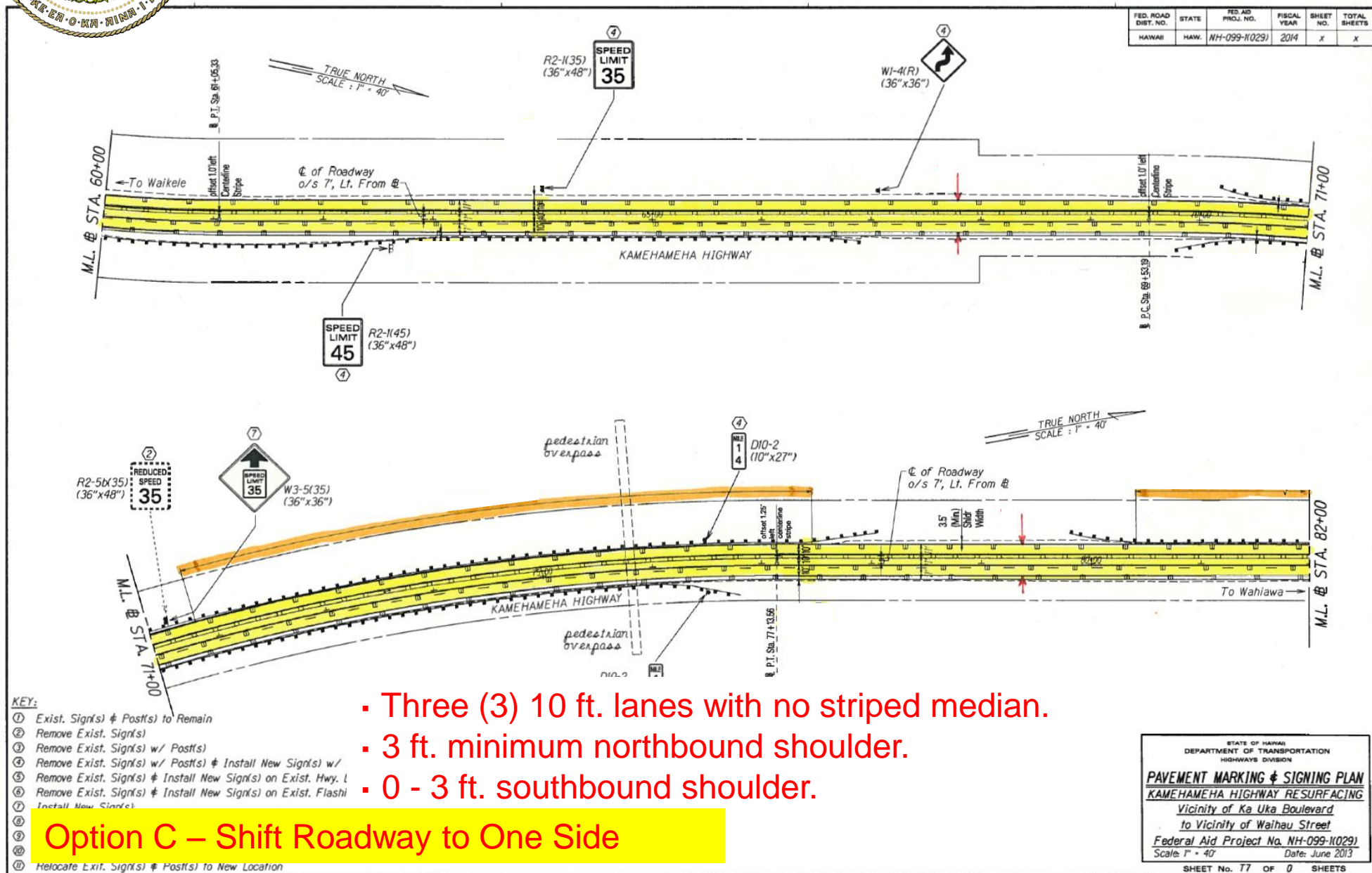
- Three (3) 10 ft. lanes with no striped median.
- 1.5 – 6 ft. shoulders on both sides.

Option B – Reduce Lane Width



Highways Division – Oahu

Kamehameha Hwy - Rehabilitation of Kipapa Stream Bridge (a.k.a. Franklin D. Roosevelt Bridge)



- Three (3) 10 ft. lanes with no striped median.
- 3 ft. minimum northbound shoulder.
- 0 - 3 ft. southbound shoulder.

Option C – Shift Roadway to One Side

STATE OF HAWAII
DEPARTMENT OF TRANSPORTATION
HIGHWAYS DIVISION

PAVEMENT MARKING & SIGNING PLAN
KAMEHAMEHA HIGHWAY RESURFACING
Vicinity of Ka Uka Boulevard
to Vicinity of Waihiu Street
Federal Aid Project No. NH-099-10291
Scale: 1" = 40' Date: June 2013

SHEET No. 17 OF 0 SHEETS

