

# **Replacement of Waipilopilo Stream Bridge Kamehameha Highway Hau`ula**

**Public Information Meeting for  
National Environmental Policy Act (NEPA),  
Chapter 343 Hawaii Revised Statutes (HRS),  
Section 106 Consultation under National Historic  
Preservation Act (NHPA)**



**State of Hawaii  
Department of Transportation  
Highways Division**

**March 13, 2018  
6:30pm - 8:30pm  
Hau`ula Civic Center**

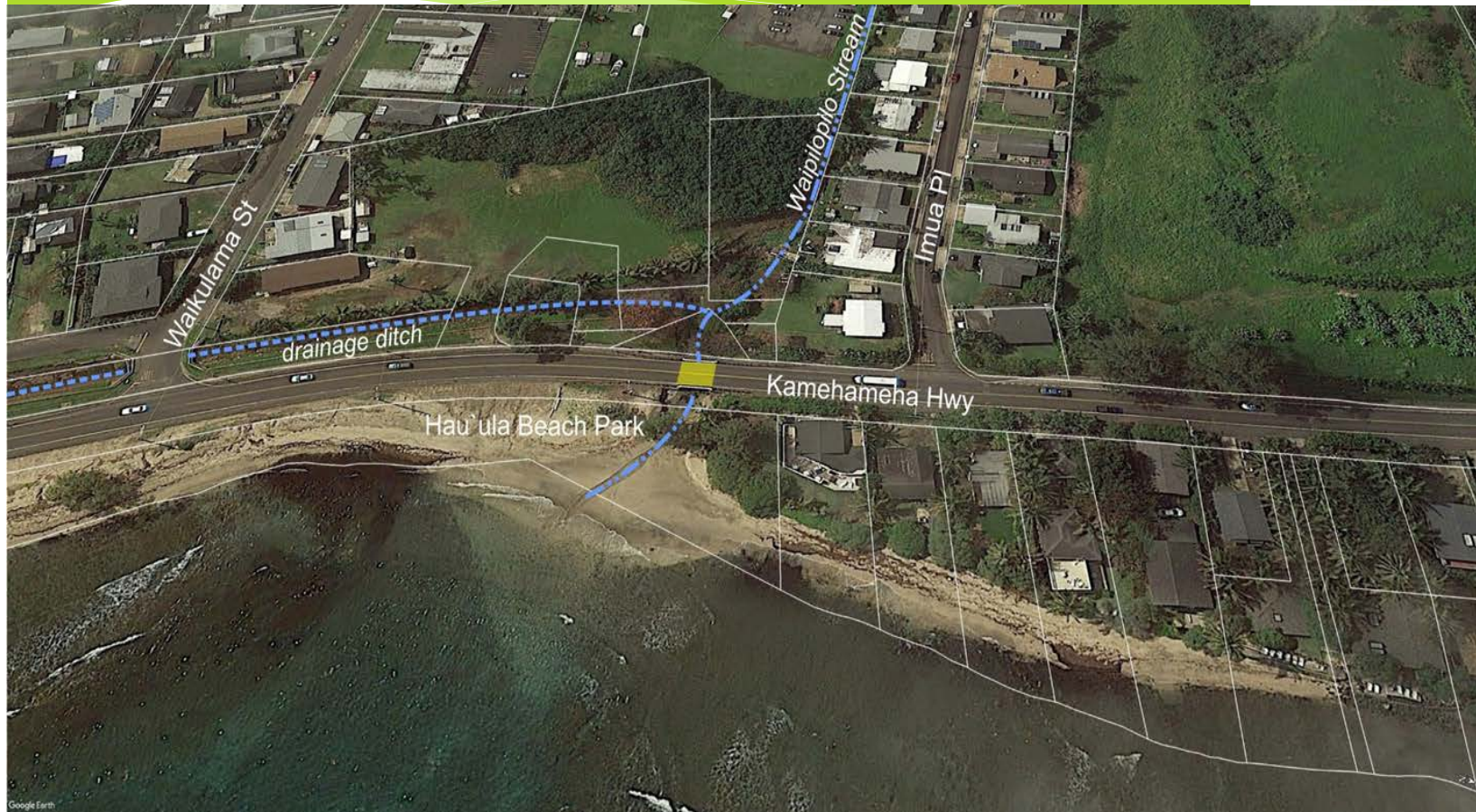
# Meeting Agenda



- Project Background and Purpose
- Project Studies and Consultation
- Alternatives Studied in Chapter 343 HRS DEA
- Criteria for Alternative Selection
- Environmental Compliance (NEPA & Chapter 343)
- National Historic Preservation Act Section 106 Consultation
- Public Comments
- Next Steps

# Project Background

## Project Location



# Project Background

## Project Timeframe

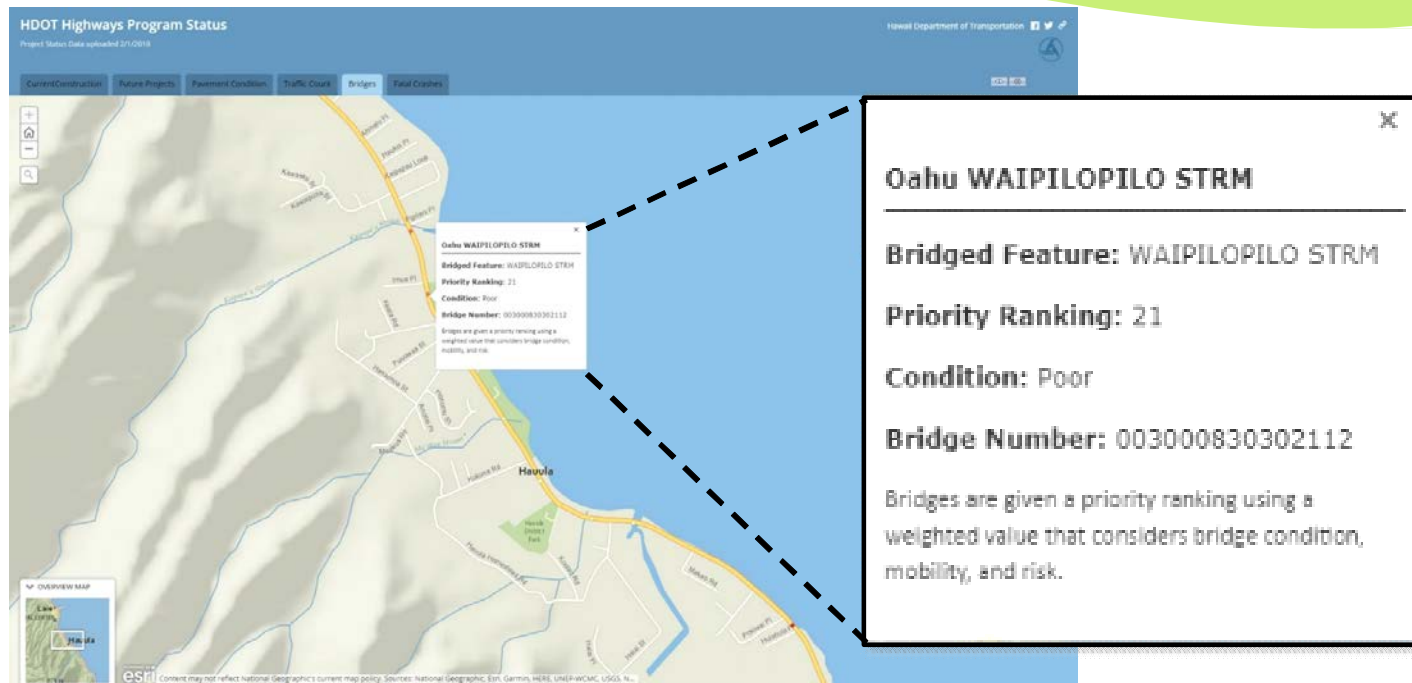
- Initial Design Phase
  - Initiated community outreach: met with Koolauloa Neighborhood Board and Hauula Community Association in September 2011
- Environmental Evaluation Phase: Draft EA per HRS Chapter 343, and Section 106 NHPA
- Finalize Design
- Anticipated Ready to Advertise in July 2020
- Construction anticipated to take 18-24 months

# Proposed Project Overview

## HDOT Highways Program Status



<http://hidot.hawaii.gov/highways>



*Waipilopilo Stream Bridge Replacement, Hau'ula, Kamehameha Hwy*



# Project Purpose



- Built in 1932, bridge now has a Structural Rating (SR) of 47.8 by FHWA National Inventory Bridge Standards.
- Scope changed from Rehabilitation to Replacement to meet current Federal and State design standards



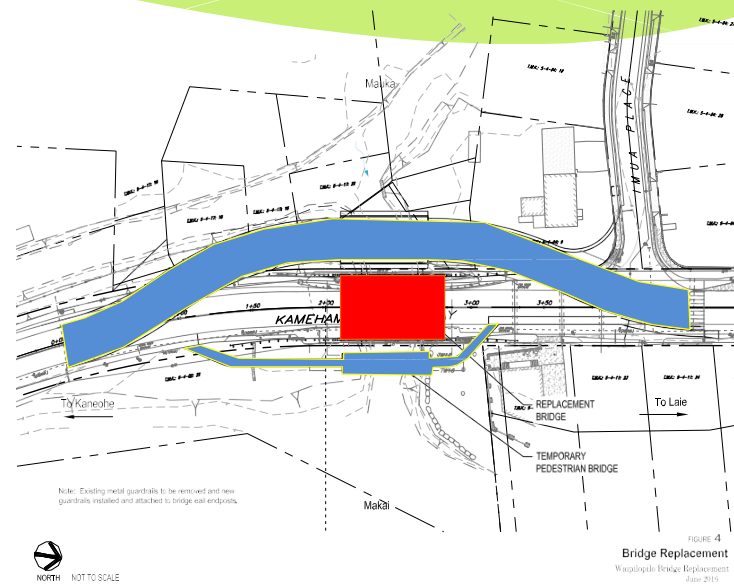
*Waipilopilo Stream Bridge Replacement, Hau`ula, Kamehameha Hwy*

# Project Background

## Bridge Replacement Sequence



- Temporary mauka detour vehicular road; temporary makai pedestrian bridge
- Demolish and remove existing bridge
- Construct new bridge substructure and supports for 16- and 12-inch waterlines
- Construct new bridge superstructure and approach, bridge rail and endpost; install new waterlines on new bridge
- Remove temporary facilities
- Restore public and private properties to preconstruction condition



# Project Studies and Consultation



## State Chapter 343 HRS EA

- Archaeological Inventory Survey
- Cultural Impact Assessment
- Biological and Water Quality Surveys
- Hazardous Materials Assessment
- Engineering studies: hydrological, geotechnical analyses

## Federal NEPA Compliances

Section 106 Consultation per NHPA

- NHOs
- NPS, ACHP
- SHPD

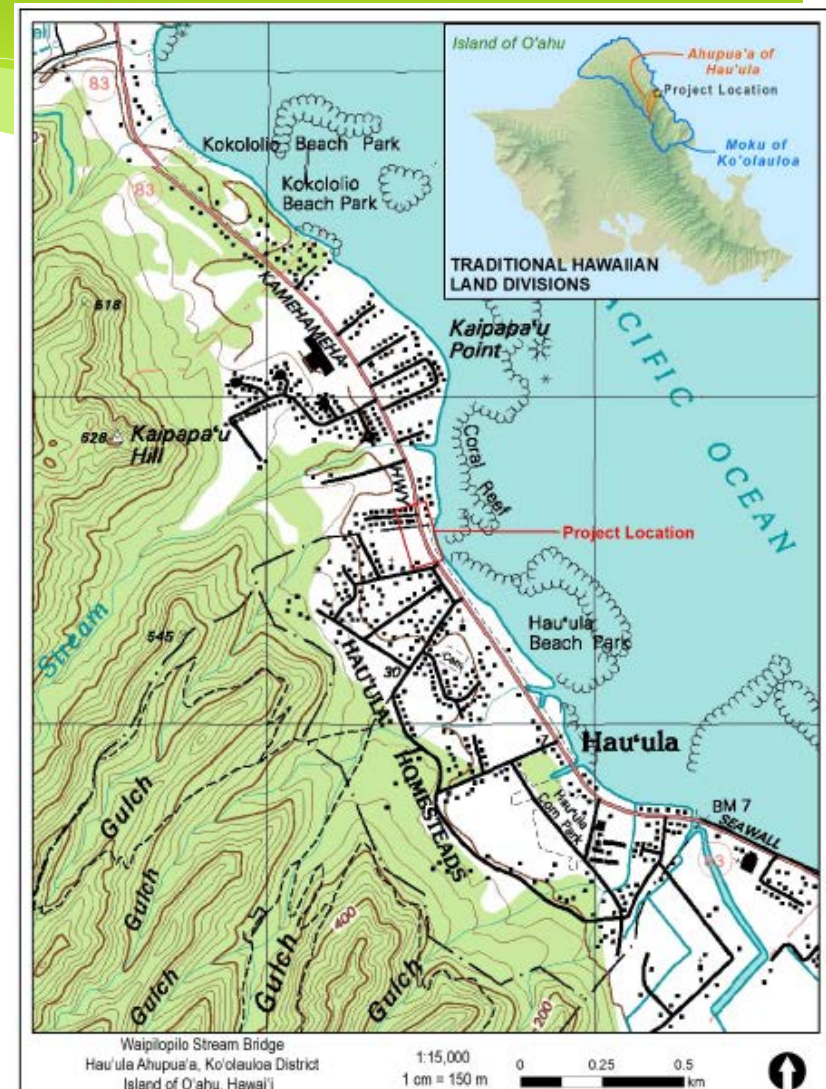
Section 7 ESA

- NOAA
- USFWS

NOAA/NMFS: EFH

Section 4(f): Historic Bridge

Section 4(f): Public Park





# Project Studies and Consultation

## Chapter 343 HRS DEA



### Early Consultation(2011-2016)

#### Pre-assessment Phase

- Early consultation began Fall 2011
- Letters to agencies, organizations, utilities, community sent March 2016 responses included in Draft EA

### Draft EA Phase (2016 – Present)

- AIS, CIA , Flora and Fauna, and Water Quality Surveys, Hazmat Assessment completed, incorporated into Draft EA
- SHPD accepted AIS report findings and mitigation measures per HRS Section 6E
- Draft EA published in OEQC Environmental Notice March 8, 2018



FIGURE 2  
Aerial View with Tax Map Parcels  
Waipilopilo Bridge Replacement  
June 2016

# Alternatives Studied in Chapter 343, HRS Draft EA



- Do Nothing: as is condition
- Rehabilitation: widen/retrofit existing structure
- Replacement: new structure to meet State and Federal design requirements



# Criteria for Alternative Selection

- No Action would require on-going maintenance while not updating the bridge to meet current design standards
- Rehabilitation would only partly correct design requirements due to overall deterioration
- Replacement would meet current State and Federal design standards



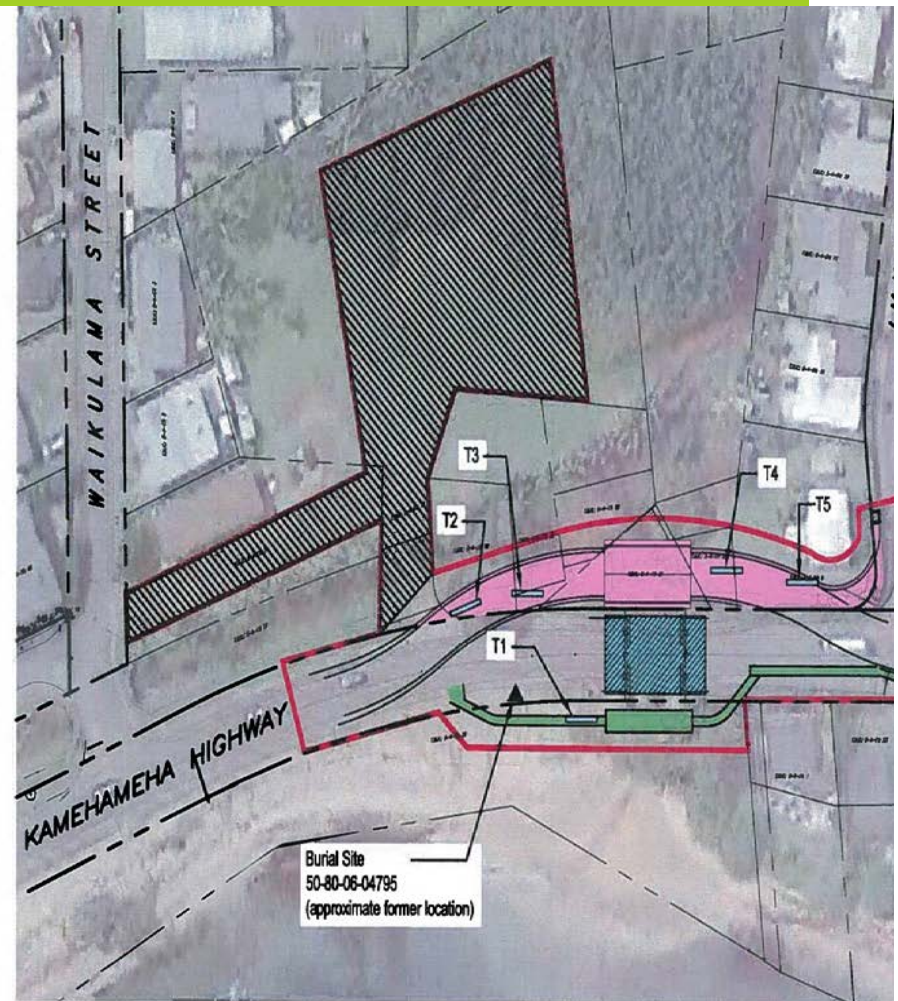
# Environmental Compliance

## Federal NEPA



### Section 106 NHPA

- Area of Potential Effect (APE) consultation
- SHPO concurred with HDOT's APE August 2015
- Initiation of the consultation process began with Newspaper ad published in *Honolulu Star Advertiser* on February 22, 2016 & initiation of consultation announced via letters sent March 2016 to NHOs seeking comments
- Newspaper ad published in the *Honolulu Star-Advertiser* Feb. 27, 2018 and March 1, 2018 edition of the *Ka Wai Ola* to announce tonight's public information meeting.



NORTH NOT TO SCALE

#### Legend

Area of Potential Effect (APE)

Test Excavation

Temporary 2-Lane Bridge

Replacement Bridge

Temporary Pedestrian

Construction Staging



# Environmental Compliance

## NHO Consultation

March 2016



SHPD      OHA  
DHHL      Hui Malama  
Historic Hawaii Foundation  
Koolauloa Hawaiian Civic Club  
Punaluu Community Association  
Hawaii Laieikawai Association, Inc.  
Kahuku Community Association  
Council for Native Hawaiian Advancement  
Four Points Global Services Corp.  
Hawaii Maoli  
Hui Hooniho  
Meleana Kawaiaea, LLC  
Na Ohana o Puuaoi a me Hanawahine  
Native Hawaiian Economic Alliance  
Pacific American Foundation  
Pap Ola Lokahi  
Peahi Ohana  
Royal Hawaiian Academy of Traditional Arts  
The I Mua Group



# Environmental Compliance

## NEPA and Chapter 343 HRS



- Both Federal and State money would fund this project
- Must comply with the following Federal and State laws
  - NEPA
  - Chapter 343, HRS

# Environmental Compliance

## Project Progress, Current Status



- Public information meeting: March 13, 2018
- FHWA, with SHPD concurrence, rendered determination of adverse effect on the bridge as a historic property: HAER completed, Memorandum of Agreement is in progress
- Finalize environmental documentations: Chapter 343 HRS EA (comment period March 8, 2018-April 9, 2018) and NEPA Categorical Exclusion (Catex) Doc.

# Section 106 Consultation under NHPA



- Requires Federal agencies to consider the effects of their actions on historic properties
- Related State requirement is HRS Chapter 6E: archaeological inventory survey and cultural impact assessment
- Section 106 is a consultation process
  - Requires consultation with NHOs, community.

*Waipilopilo Stream Bridge Replacement, Hau'ula, Kamehameha Hwy*



# National Historic Preservation Act Section 106 Consultation



## Steps involved:

1. Initiated the process by inviting parties to consult
2. Identified historic properties
3. Assess effects: FHWA made the determination, SHPD concurred the action is adverse due to proposed replacement of historic bridge
4. Steps needed to resolve adverse effects: HAER, MOA, archaeological monitoring during construction

# Public Comments Welcome



What are your comments for this project regarding

- Section 106 (historical and cultural sites)
- Chapter 343 and NEPA (comment about this project)

Please be respectful to those speaking

Please keep focused on the proposed project

Make comments here tonight or take home a comment form and mail it to us on or before April 9, 2018

Access the DEA on OEQC's website:

<http://health.Hawaii.gov/oeqc/>

# More Information



**HDOT**

[dotpao@hawaii.gov](mailto:dotpao@hawaii.gov)

[hidot.hawaii.gov](http://hidot.hawaii.gov)

HDOT Facebook & Twitter

587-2160

# Next Steps



## **Chapter 343, HRS**

- Finalize EA/Finding of No Significant Impact (FONSI)

## **Design**

- Plans, Specifications & Cost Estimates

## **Prepare Federal**

## **Environmental Document**

- NEPA Catex

## **Obtain Permits**

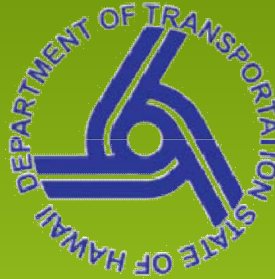
## **Anticipated Ready to**

## **Advertise Date: July 2020**

- Construction Duration: 18 to 24 months







# Mahalo

***Thank you for your patience as  
HDOT works to improve  
our state highways***

# Contact Information



Contact: Sharen Cho-Ibanez  
DOT Highways Division

Phone: (808) 692-7551

Email: [Sharen.H.Cho-Ibanez@hawaii.gov](mailto:Sharen.H.Cho-Ibanez@hawaii.gov)

Address: 601 Kamokila Blvd., Rm. 688  
Kapolei, Hawaii 96707

Contact: Liana Choy  
Sato & Associates, Project Manager

Phone: (808) 955-4441

Email: [lchoy@satoandassociates.com](mailto:lchoy@satoandassociates.com)