

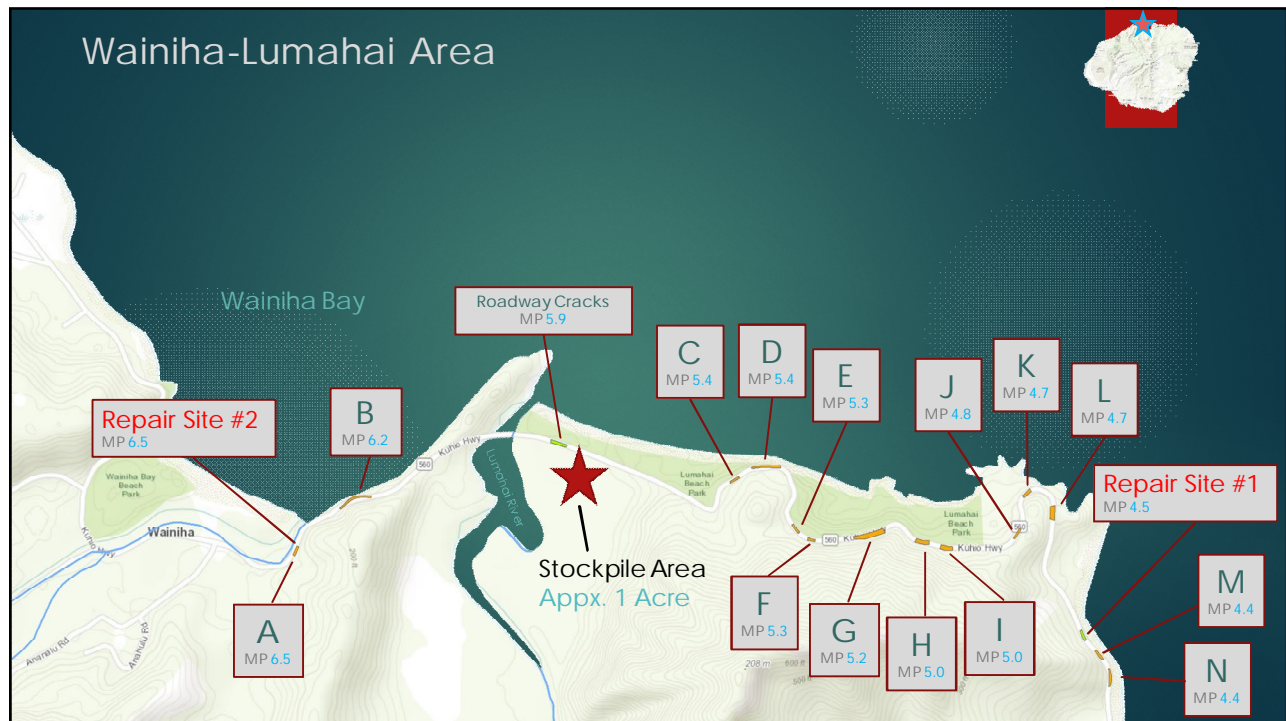


# Kūhiō Highway Emergency Flood Repairs

- ▶ Roughly 32 Sites
  - ▶ 18 Slope Cleanup Sites
  - ▶ 5 Roadway stabilization Sites
  - ▶ 3 Bridge Installations
  - ▶ 1 CRM Wall Replacement
  - ▶ 3 Stream/River Debris Removal Sites
  - ▶ 2 Stream crossing repairs



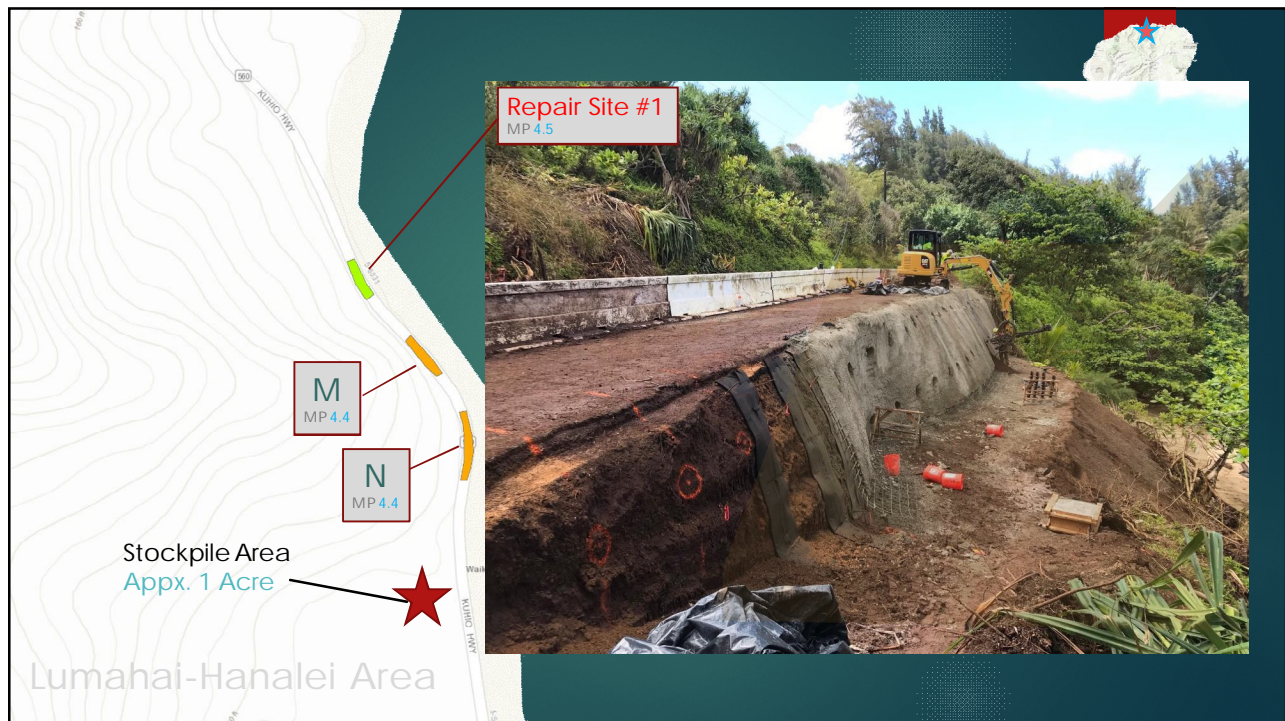
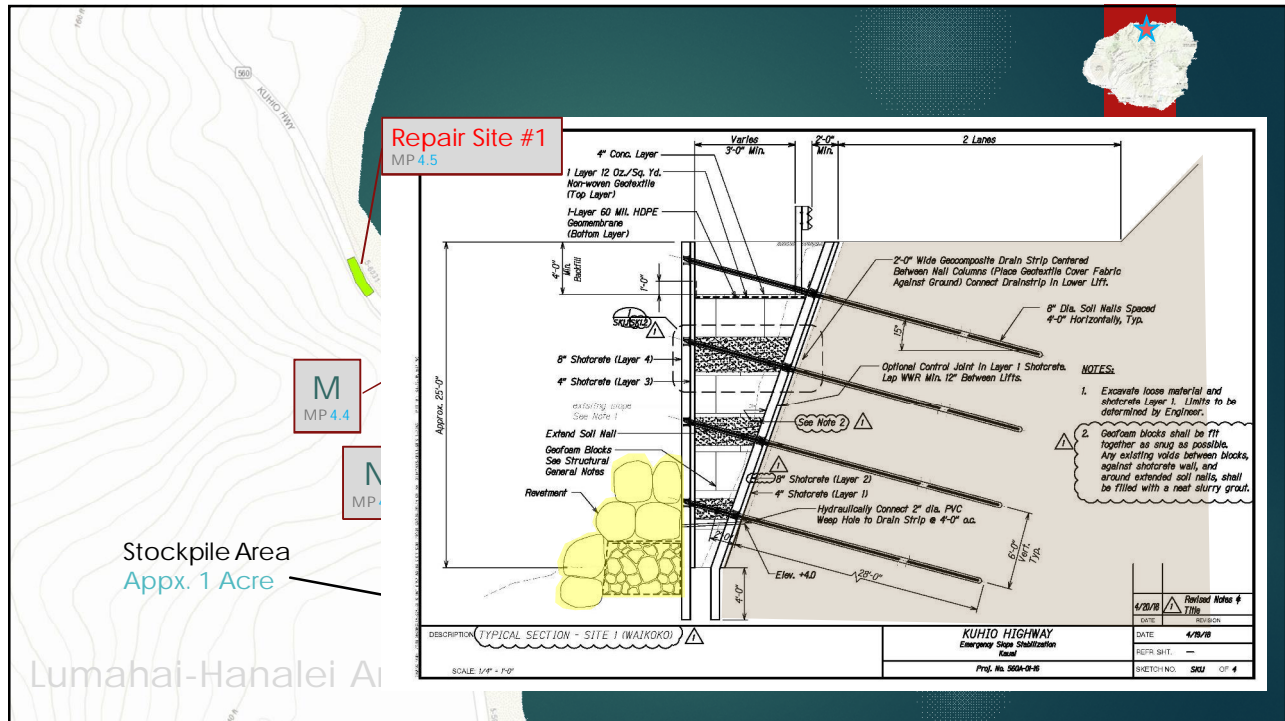
## Wainiha-Lumahaia Area

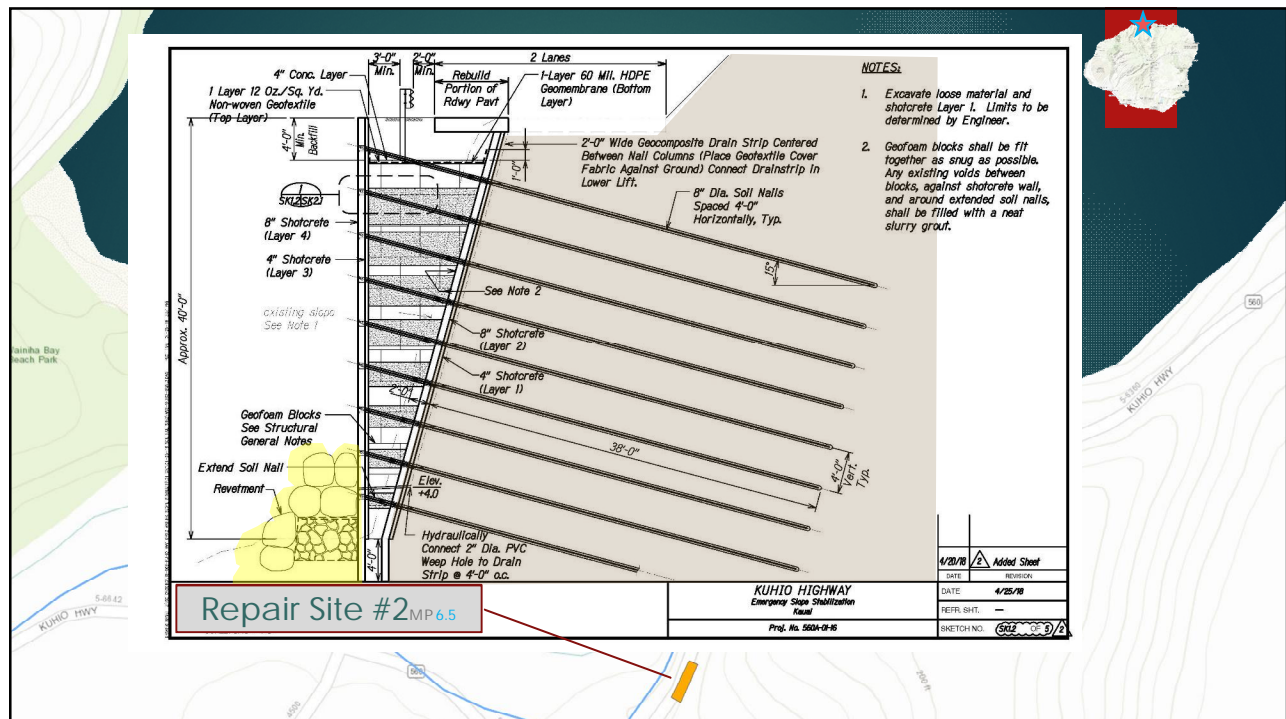




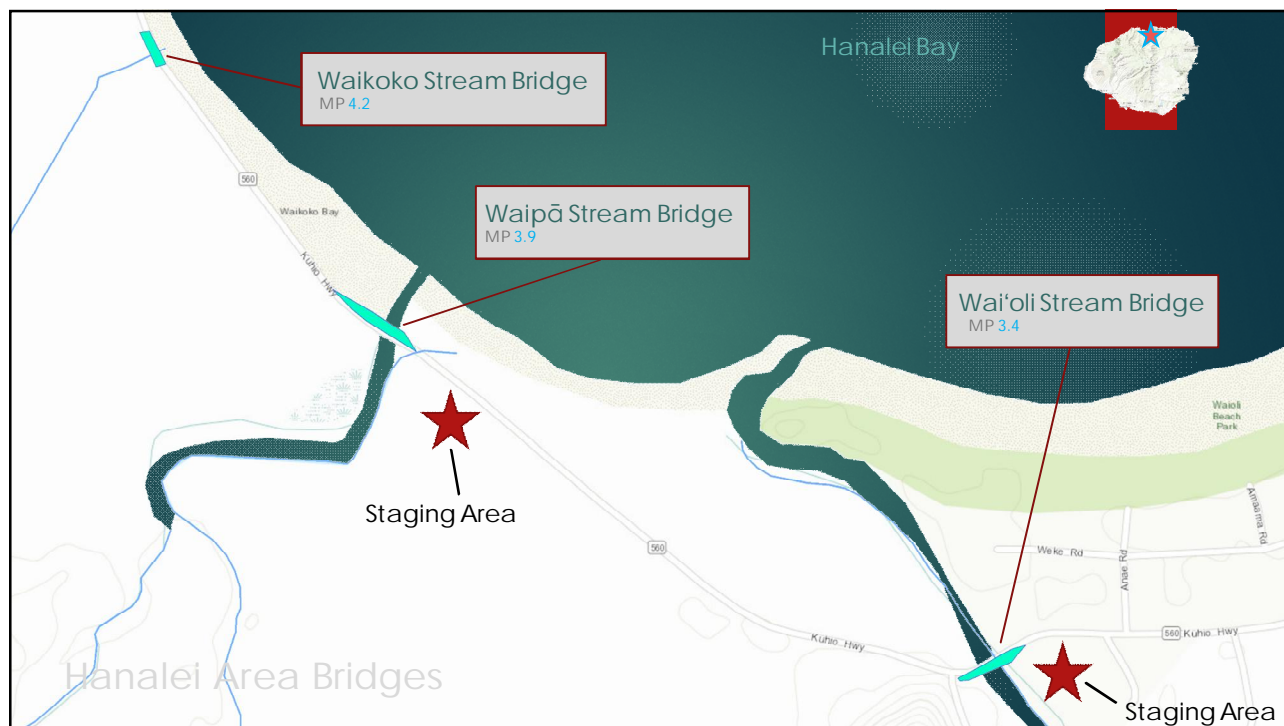




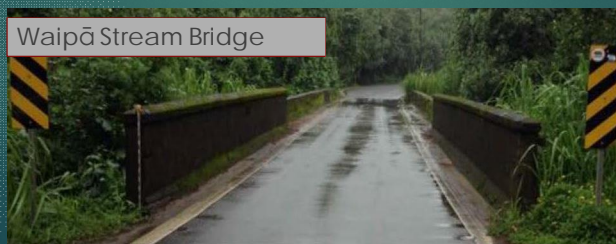
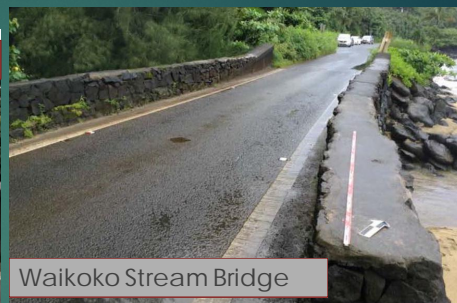








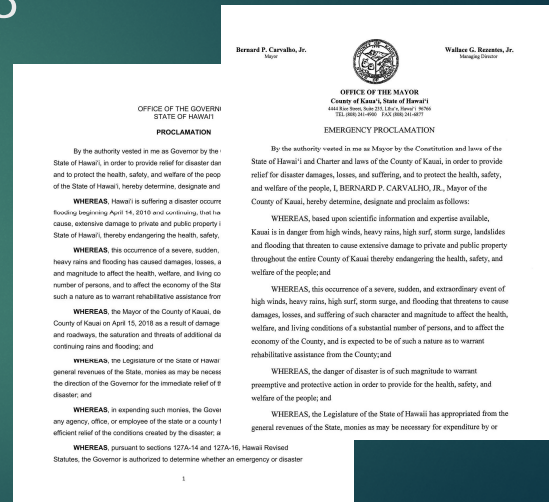
## Kaua'i Emergency Flood Repairs and Cleanup April 2018



# Kaua'i Emergency Flood Repairs and Cleanup April 2018

## Regulatory Requirements

- ▶ NEPA
- ▶ Section 7 of the Endangered Species Act
- ▶ Section 106 of National Historic Preservation Act
- ▶ Section 4(f)
- ▶ Army Corps Permit



# Kaua'i Emergency Flood Repairs and Cleanup April 2018

## Section 106 of the National Historic Preservation Act

- ▶ Requires federal agencies to consider the effects of their actions on historic properties.
- ▶ Section 106 is a process that requires consultation with Native Hawaiian Organizations (NHOs).
- ▶ Goal of Consultation is to:
  - ▶ Identify historic and cultural resources protected under Section 106.
  - ▶ Seek Input on sites and features of historic significance and/or cultural importance that may be affected by the project.



## Kaua'i Emergency Flood Repairs and Cleanup April 2018



### Repair Process Time-Frames

- ▶ Cleanup and Repairs are in-progress – Revetments Repair Sites No1. and No. 2 will be ready for installation in 3-4 months.
- ▶ NEPA and Army Corps Permits – Est. Complete Mid-June.
- ▶ Bridge Replacement:
  - ▶ Nightwork begin Mid-June.
  - ▶ Anticipated duration 4 months.

Comments,  
Questions and Answers





MAHALO

Contact Information:

Larry Dill,

HDOT Kaua'i District Engineer

(808) 241-3000

[Lawrence.j.dill@Hawaii.gov](mailto:Lawrence.j.dill@Hawaii.gov)