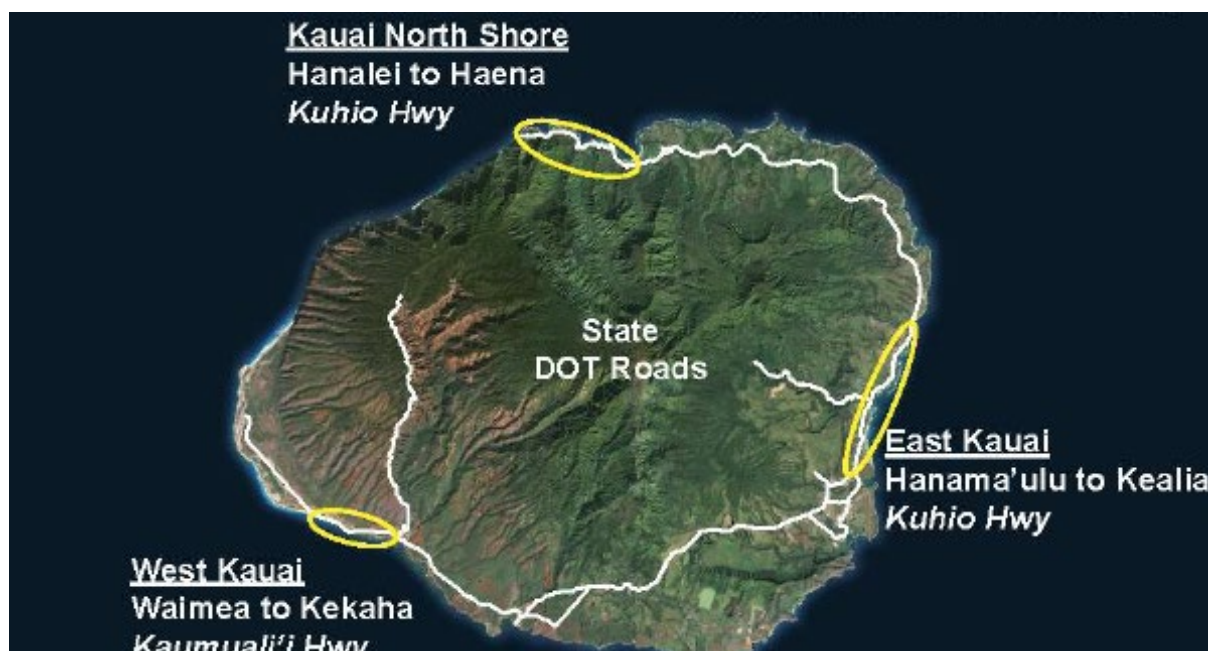
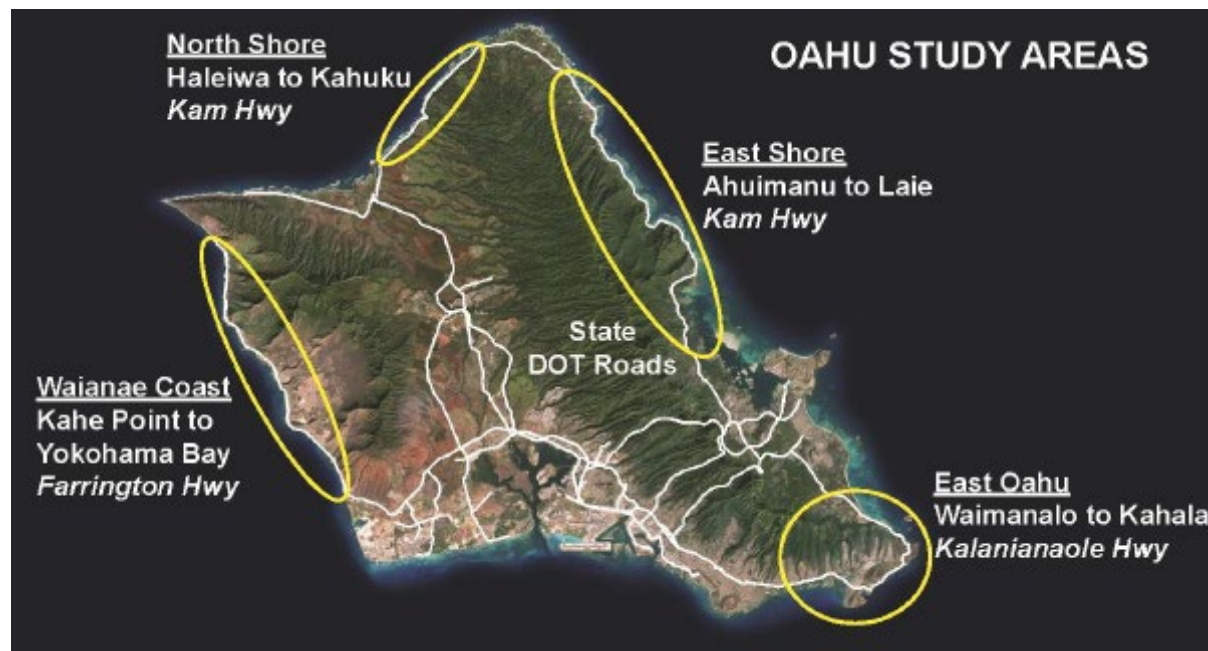
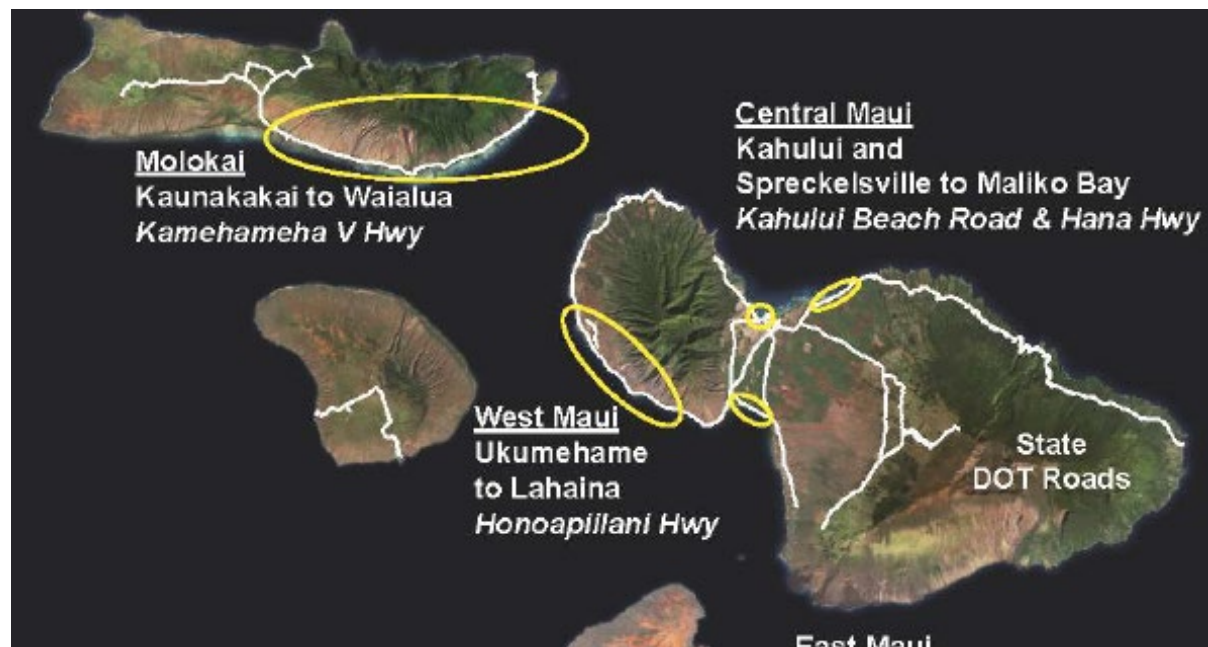
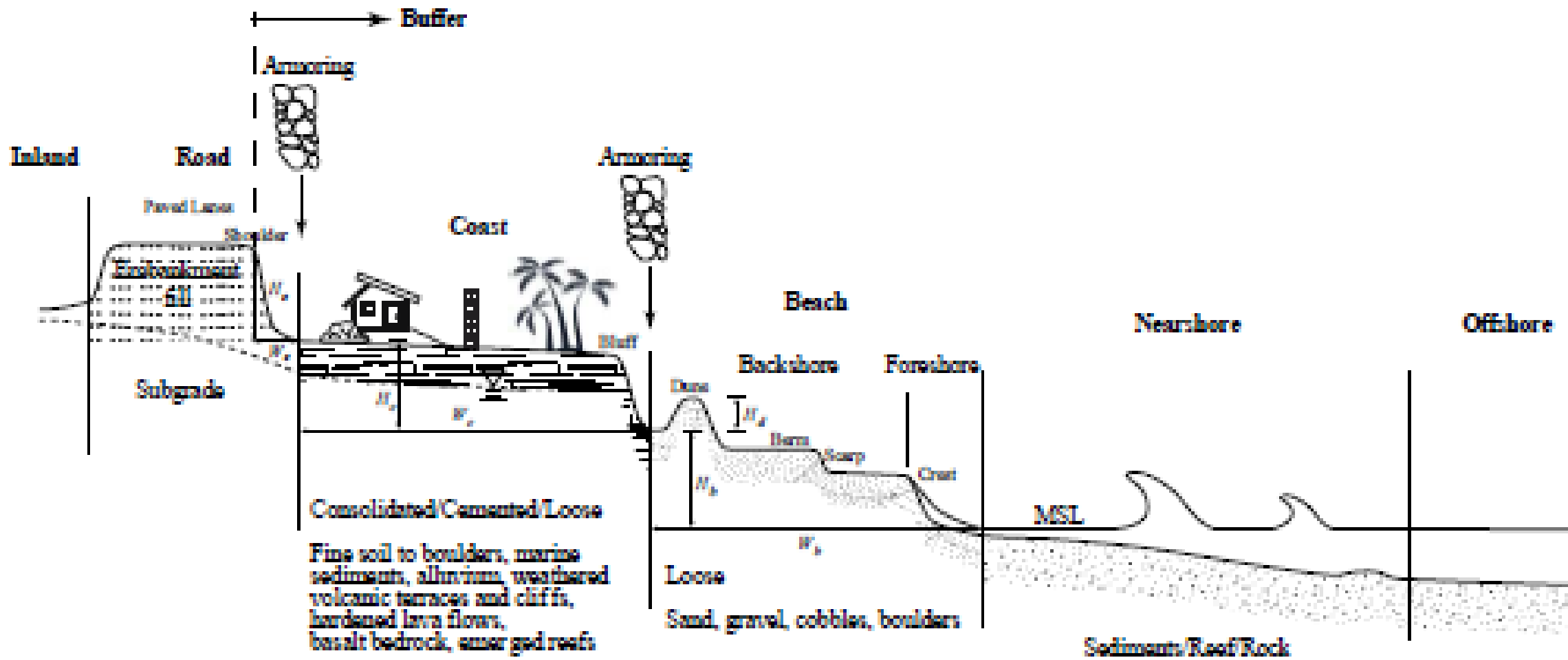




Sea Level Rise and Transportation

*State Highways policy
considerations*









Kamehameha Highway Repairs at Ka'a'awa, O'ahu

(WSP Photos)



Kamehameha Highway, Laniakea Beach, O'ahu

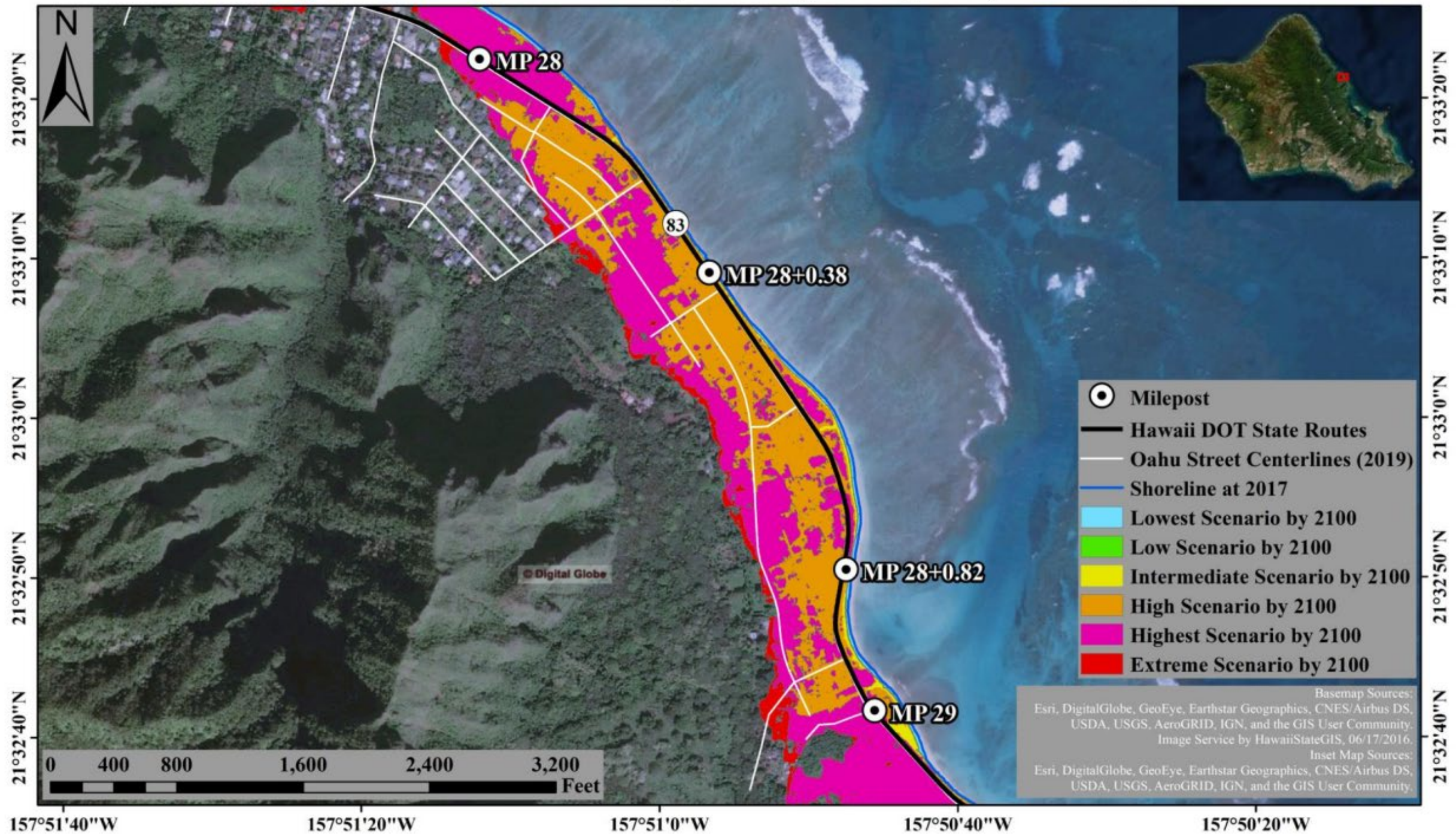
(WSP Photos)



Kuhio Highway at Waikoko



Map of Sea Level Rise Inundation by 2100 along Mile 28, SR 83, East Shore, Oahu



Sustainable Transportation must consider more than just decreased consumption of fossil fuels in ground transportation.



1) Energy consumption



2) Vehicle standards



3) Green construction



4) Research



5) Interagency coordination



FOR OFFICIAL USE ONLY
DEPARTMENT OF TRANSPORTATION
HIGHWAYS DIVISION

9181
784

HAWAII
H288
CUTTER CHEVROLET

SAFETY
SYSTEM
AND SIGN
HAWAII