

Farrington Highway Replacement of Makaha Bridge No. 3 & No. 3A

Federal-Aid Project No. BR-093-1(20)

District of Waianae, Island of Oahu

Project Update

June 23, 2021





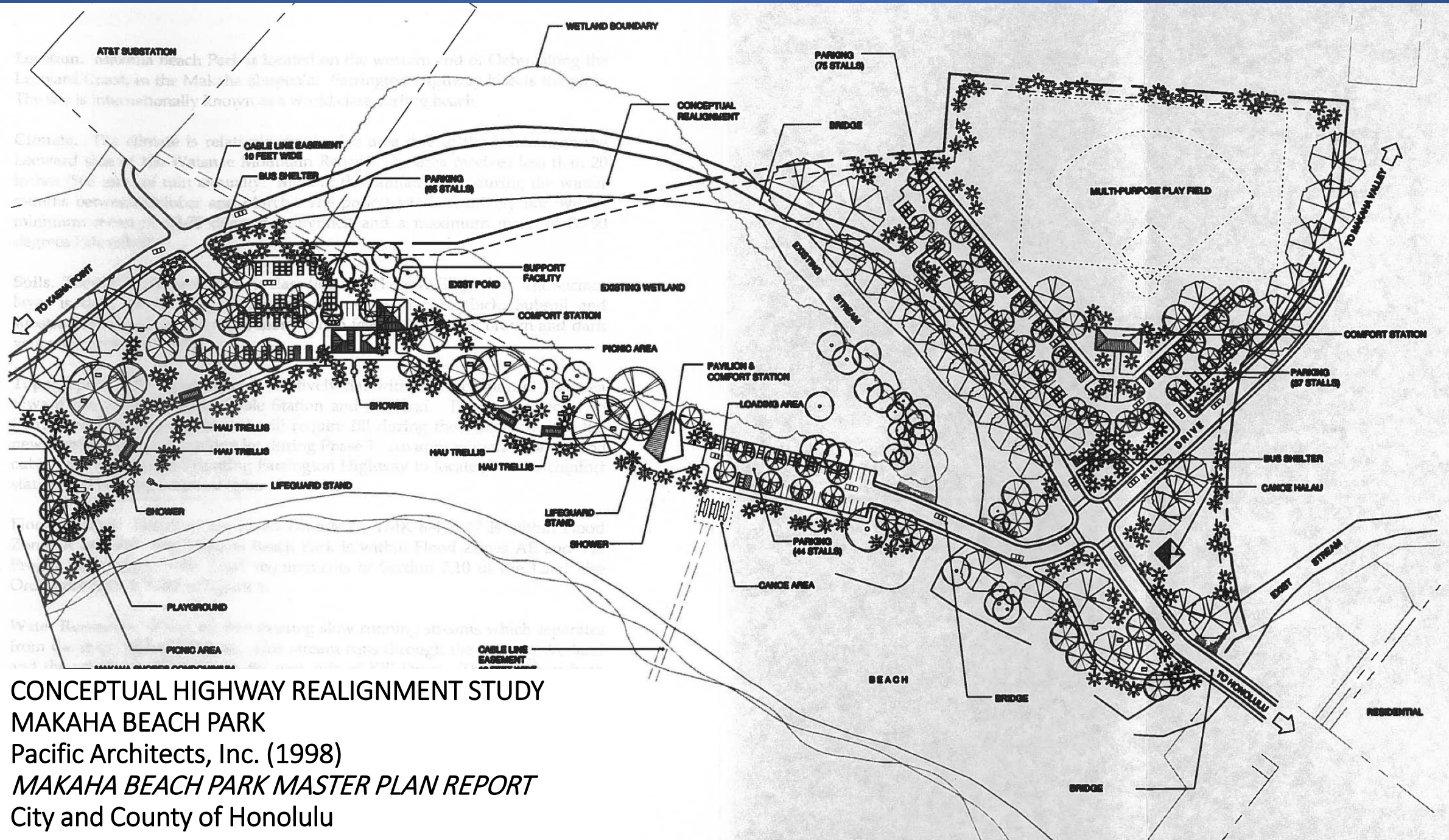
Project Location

- Purpose
 - Replacing 2 aging wood bridges
 - Improve structural integrity
 - Improve hydraulic opening
 - Improve safety



Status

- March 8, 2021 – Original construction start
- HDOT considers adjustments due to future corridor impacts and community concerns
- April 1, 2021 – HDOT holds project and revisits design
- May 2021 – Pre-consultation with community
- June 2021 – Stakeholder engagement



CONCEPTUAL HIGHWAY REALIGNMENT STUDY
 MAKAHA BEACH PARK
 Pacific Architects, Inc. (1998)
MAKAHA BEACH PARK MASTER PLAN REPORT
 City and County of Honolulu



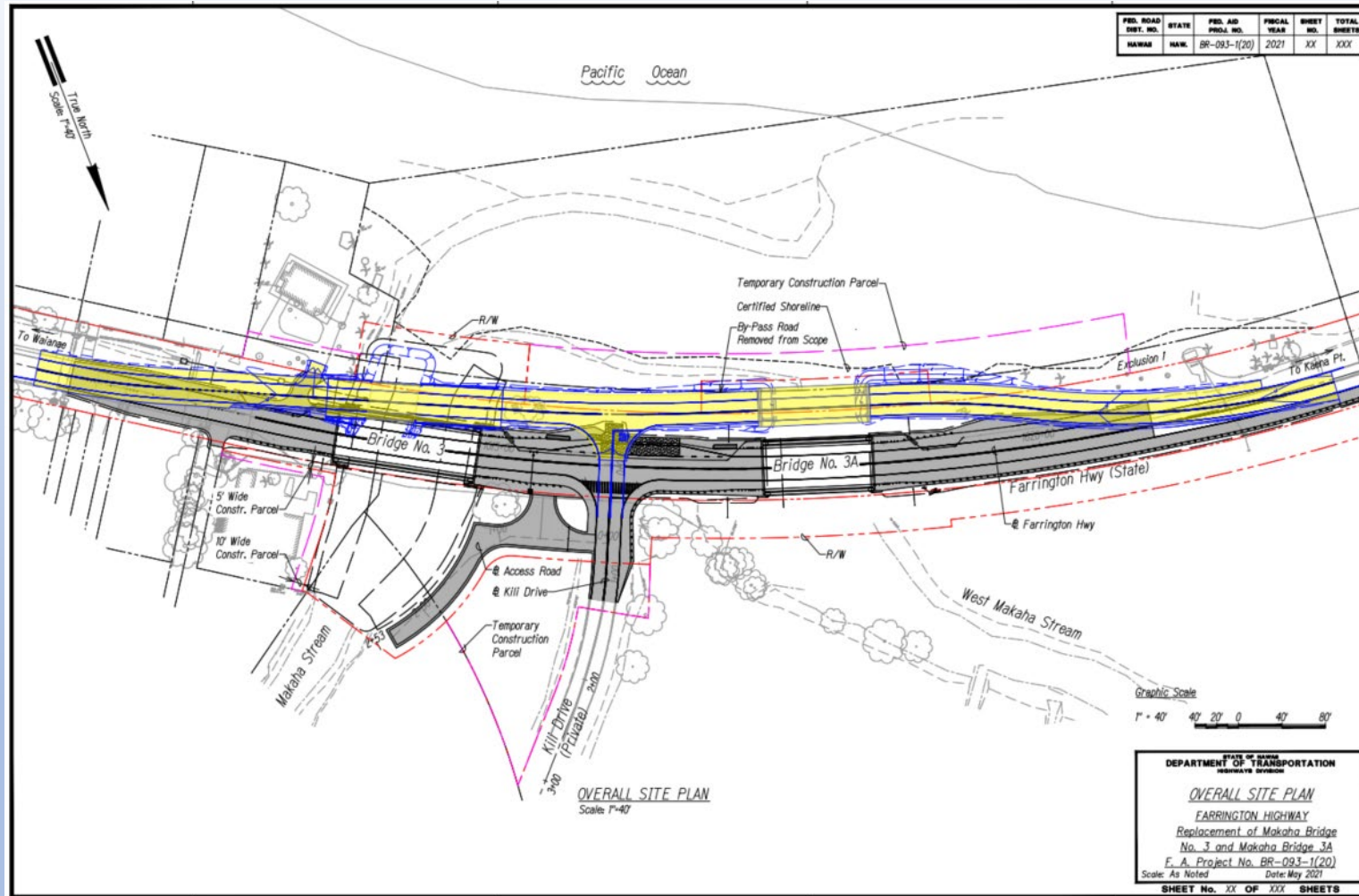
Anticipated Climate Change –Sea Level Rise



Proposed Project Approach

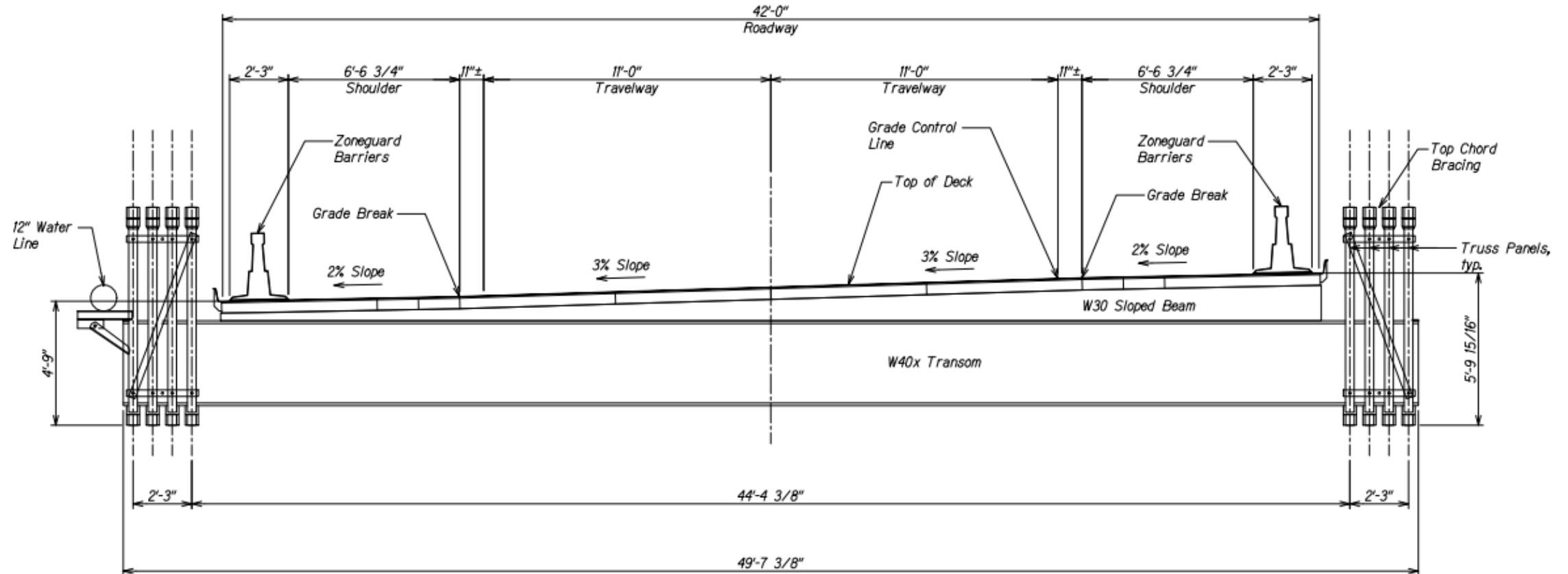
- Ensure bridge replacements do not preclude the future realignment of Farrington Highway
- Consider the long-term effects of climate change and sea level rise on the corridor and design accordingly
- Reduce rights of way and lane closure impacts on the public
- Look at funding opportunities for the realignment project
- Work with Waianae High School to determine short and mid term opportunities

Proposed Redesign



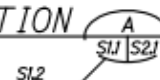
- Prefabricated steel bridges with epoxy coated deck w/ 11-foot travel lanes and 7.5-foot shoulders.
- Eliminated
 - temporary bypass road
 - temporary bridge and culverts
 - center pier at Bridge 3 (Makaha Stream)
 - construction parcel on the East Makai side of Bridge 3.
- Reduce construction schedule from 15 months to 9 months
- Reduce construction cost
- Anticipated construction start date August 2021
- Submit RAISE Grant application in July

Proposed Roadway Section

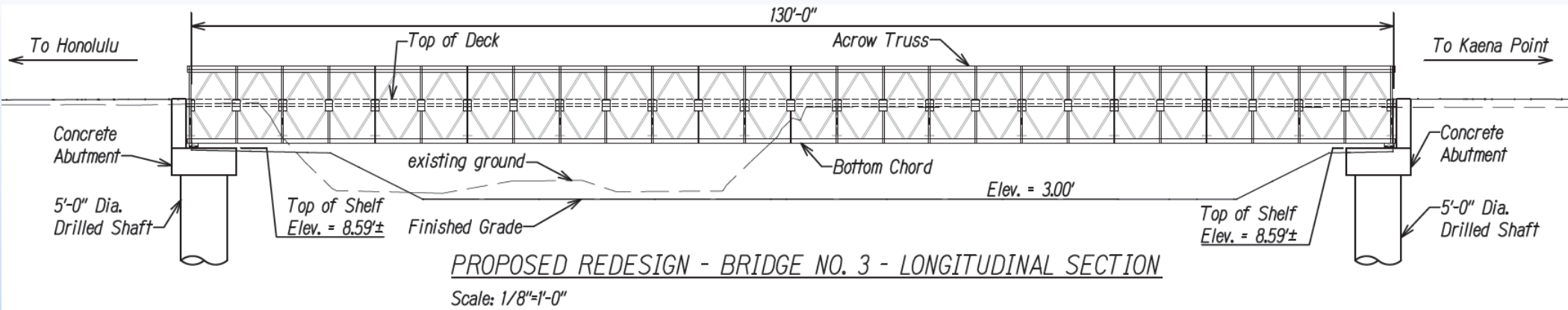


TYPICAL ACROW SECTION

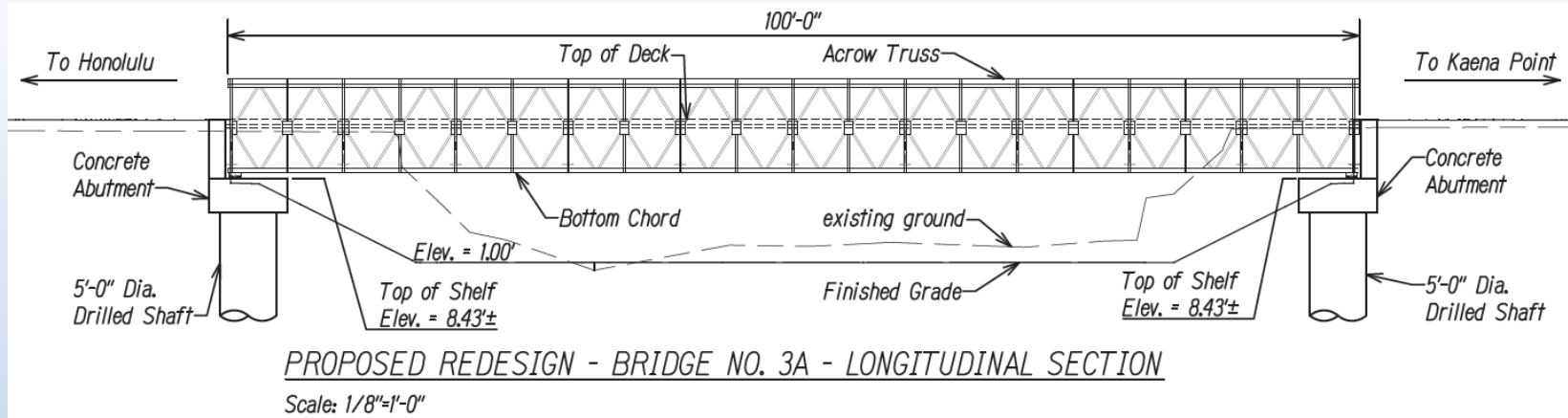
Scale: 1/2" = 1'-0"



Makaha Bridge No. 3 Rendering



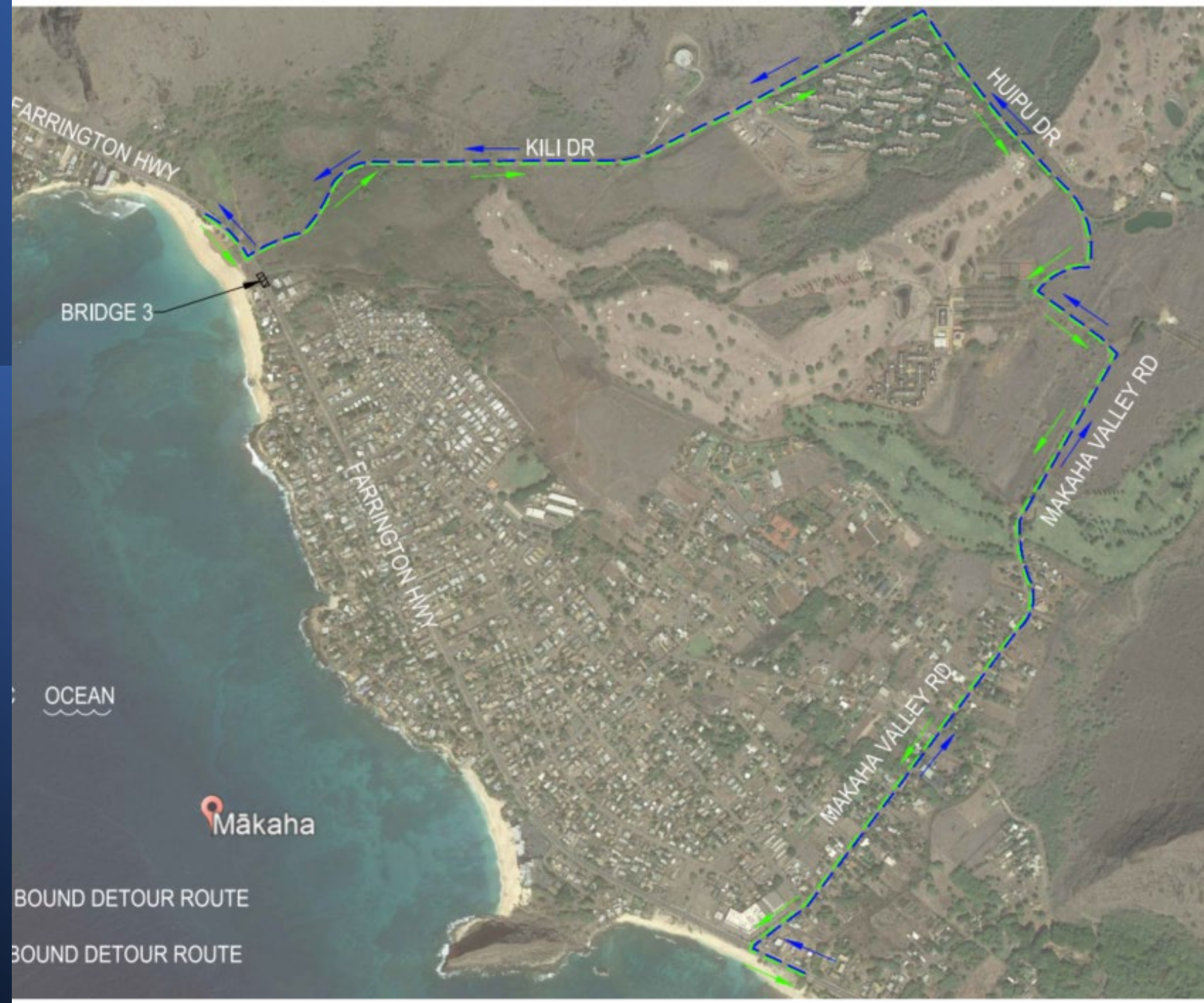
Makaha Bridge No. 3A Rendering



Construction Impacts

- Foundation installation (1 month) – Off peak - one lane closures
- Roadway & Utility Work (4 months) – Off peak - one lane closures
- Stream channel improvements (3 months) – during dry weather only
- Bridge No. 3 demolition and new bridge launching (1 weekend) – traffic detour
- Bridge No. 3A demolition and new bridge launching (1 day over a weekend) – full closure

Detour Route (Bridge No. 3)





Planned Road Closures

- 2 Lane access maintained for most of construction period
- Off peak intermittent single lane closures will be implemented when necessary
- Bridges will be constructed on the side of the facility then launched into position
 - Launch will require a full shut down of the highway for one day over a weekend
 - Emergency access will be planned for (should it be required)
 - Will coordinate with emergency management to ensure services available during the shut down

MAHALO!

Contact information &
written letters
by June 25, 2021 to:
makahabridges@qr-se.com

