

Kalihi Broadband Pilot

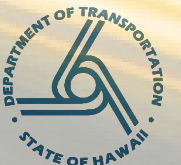
State of Hawaii Department of Transportation

July 7, 2021

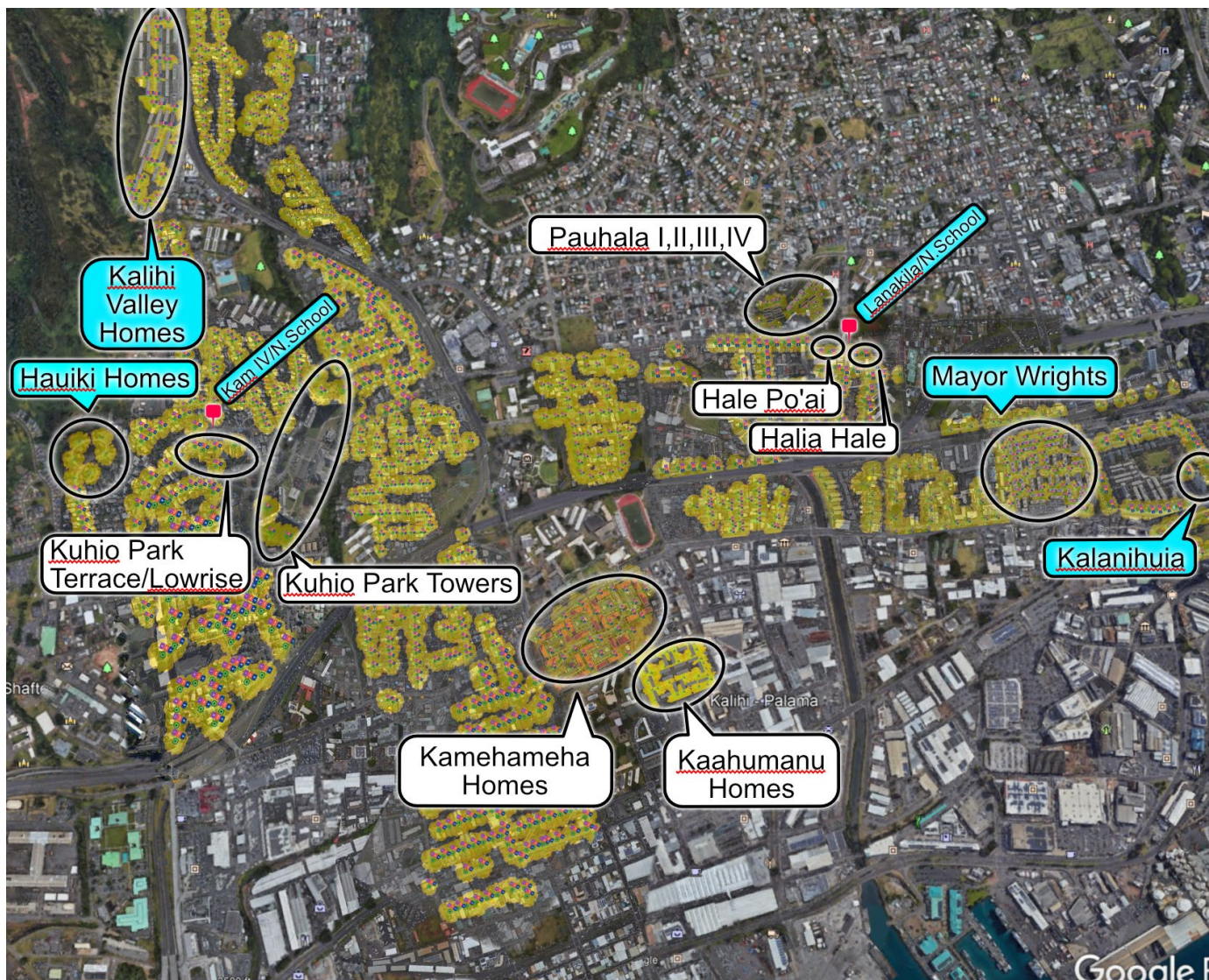
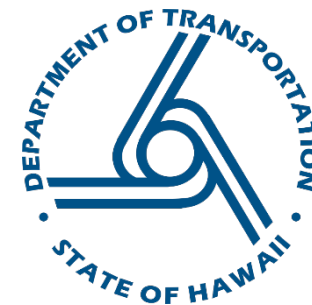
HDOT Broadband Initiative

The purpose of this pilot program is to provide increased connectivity for the State highway system and support the public's need for internet access and affordability.

- Intersections will be connected to high-speed internet to improve traffic operations.
- Additional benefit of the connected intersections is available WiFi internet.
- A widely available free Wi-Fi internet system has the potential to empower our community in the areas of education, healthcare, disaster management, workforce and economic development.



Targeted WiFi Coverage Areas



 WiFi Coverage Area

First Phase



Intersections

- N. School St. & Kamehameha IV Rd.
- N. School St. & Lanakila Ave.

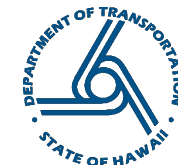


Hawaii Public Housing Authority (HPHA) Properties

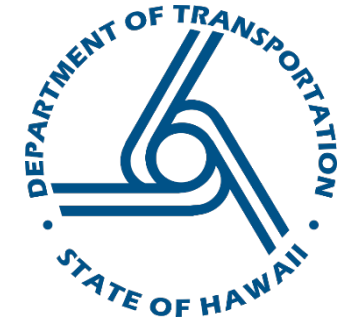
Second Phase



HPHA Properties



How it's being built.



Geo-Diverse Next Generation Firewall
with Content Filtering



High Speed Internet
Aruba Central
(Cloud Controller)

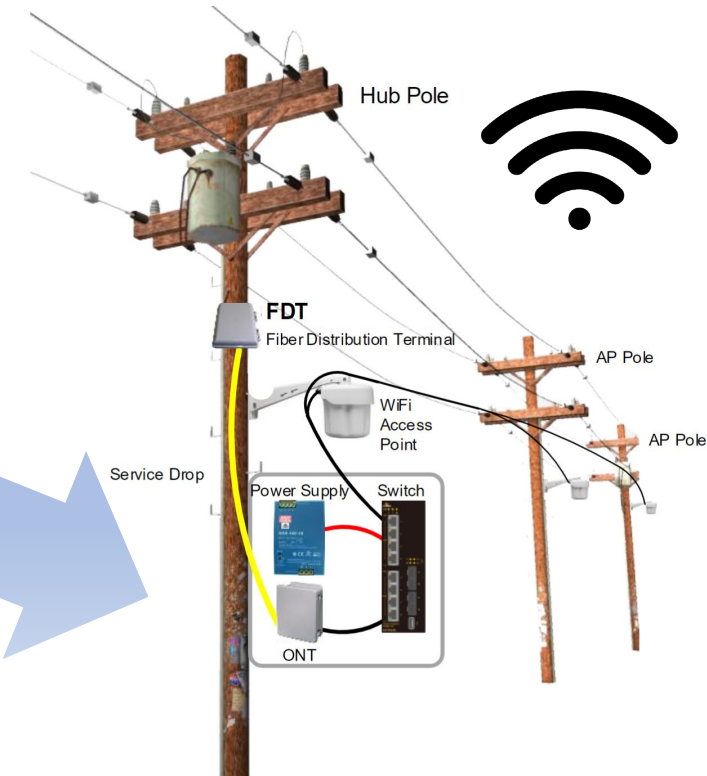


Help Desk Support in
English, Ilocano, Tagalog,
Chuukese, Marshallese, and
Hawaiian.

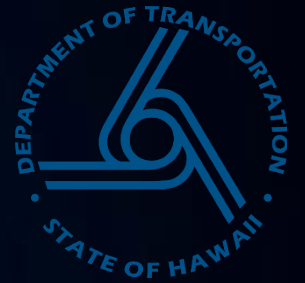


Central Office
locations

Hawaiian Telcom's Network



How to Get Free WiFi.



1

How to connect.

On your computer or mobile device, go to Settings
Go to Network & Internet, WiFi
Select the WiFi Network, SSID: "HDOT-FreeWiFi"

2

Need help?

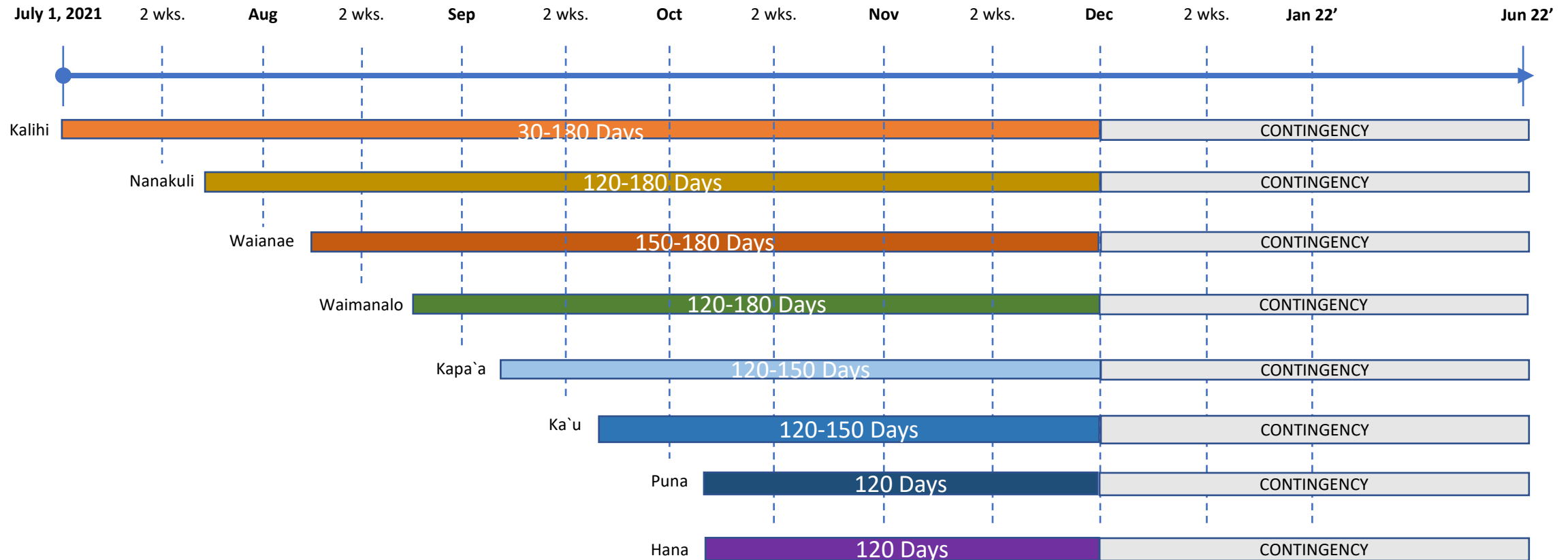
Call (808) 587-2163 and connect with our support team, in English, Ilocano, Tagalog, Chuukese, Marshallese, and Hawaiian

3

Need a device?

For students please call your school for more information.
You may also visit www.HawaiianHope.org.

Estimated Project Timeline



- Targeting to get a significant amount of each area enabled by the end of 2021
- Timeline start dates begin upon notice to proceed for the area
- Global supply chain issues may adversely impact schedules