



WAI'ANAE SUSTAINABLE COMMUNITIES PLAN - TRANSPORTATION INFRASTRUCTURE

TOPICS

- Active Construction
- Upcoming Projects
- Safety
- Hazard Mitigation



MA'IPALAOA BRIDGE

Awarded in 2016 for \$14.4M - defaulted

CONSTRUCTION BEGAN AUGUST 2019
initial EST completion date 1/2022

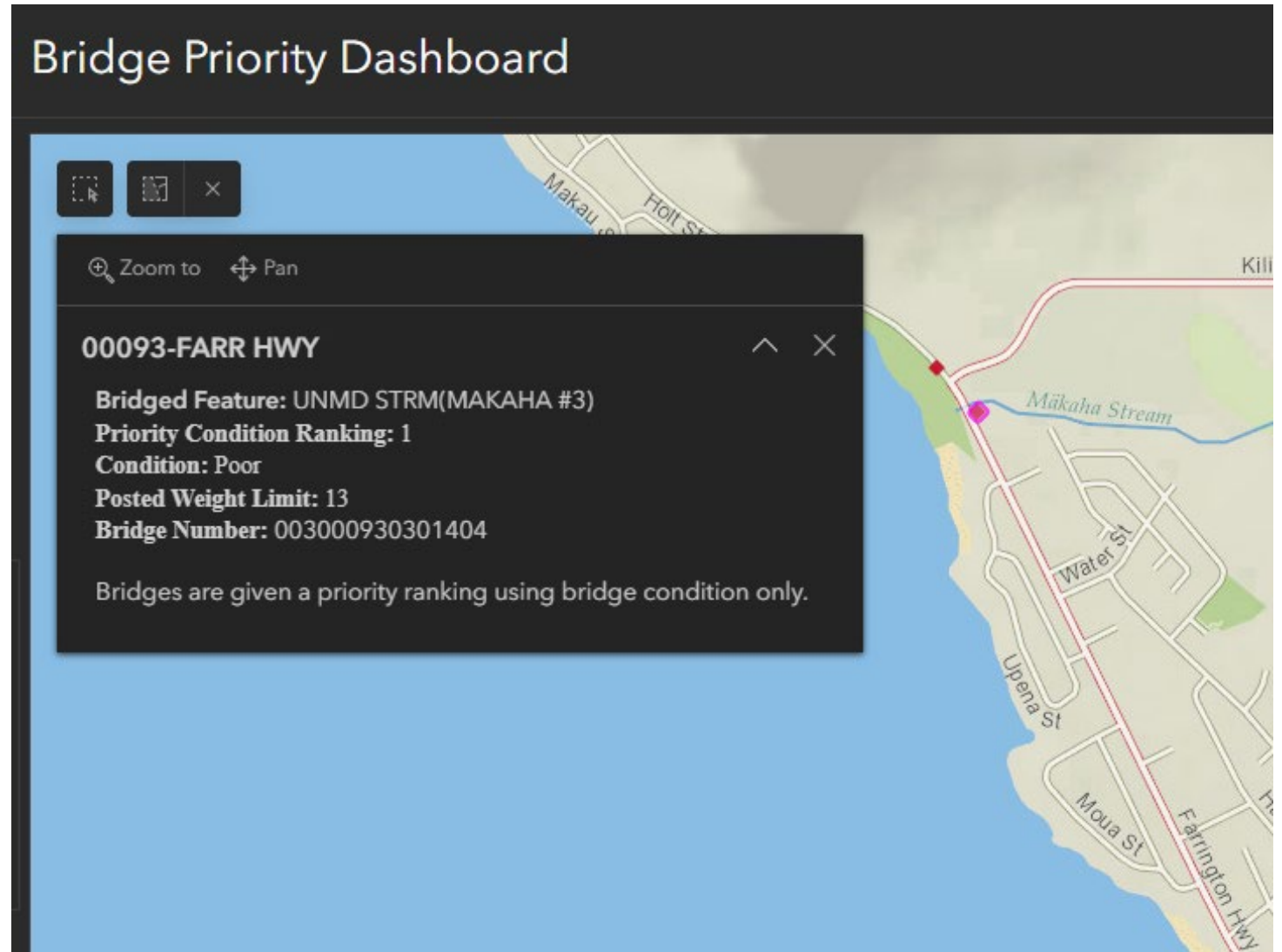
NEW EST COMPLETION – 6/30/2024

- BWS had planned water system improvements so bridge project was redesigned to make the improvements to the watermain on the side of the bridge.
- During construction found an underground fiberoptic cable (not able to tone due to water/coral) that conflicts with drilled shafts



MĀKAHA BRIDGES NO. 3 & 3A

- Bridges are wooden and were built in 1937
- Weight restricted to 13 tons
- Numbers 1 & 3 on the bridge priority list for replacement/repair
- HDOT repaired decks biennially at cost of \$500,000
- Construction began March 2021, est. completion Fall 2023

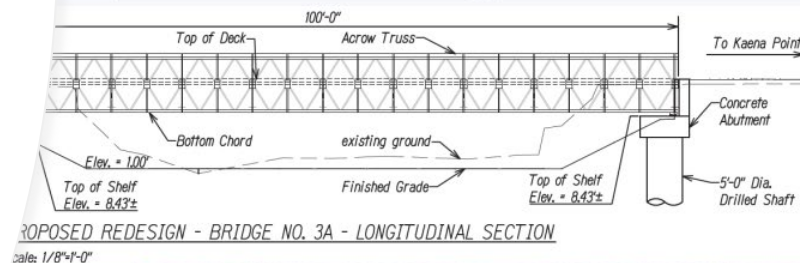


PREFABRICATED STEEL BRIDGES

- Reduced time and cost
- Service life is not as long as concrete but gives time to pursue potential realignment



Makaha Bridge No. 3A Rendering



MĀKAHA BRIDGE NO. 3A FULL CLOSURE

- Live feed and other information
<https://hidot.hawaii.gov/highways/makaha-bridge-replacement-project-no-3-and-no-3a/>
- Full closure 8 p.m. Friday, Sept. 29 through 8 p.m. Sunday, Oct. 1
- Public notice through mailers, news releases, social media, door-to-door, and text
- Mitigations in consideration of the full closure with no other access include hotel reimbursement, on-demand shuttle, secured parking lot, staffed first-aid, and pre-deployment of water truck and emergency assets

SHUTTLE
PICK-UP AND
DROP-OFF

BRIDGE
3A

KILI DRIVE

TEMPORARY PARKING LOT

Entrance on Kili Drive

Open: Friday, Sept. 29, 6:00 p.m.

Closed: Sunday, Oct. 1, 9:00 p.m.

ROAD
CLOSED

PEDESTRIAN
WALKWAY

OVERFLOW
PARKING

MĀKAHA BEACH PARK

FARRINGTON
HIGHWAY

IN DESIGN PROJECTS

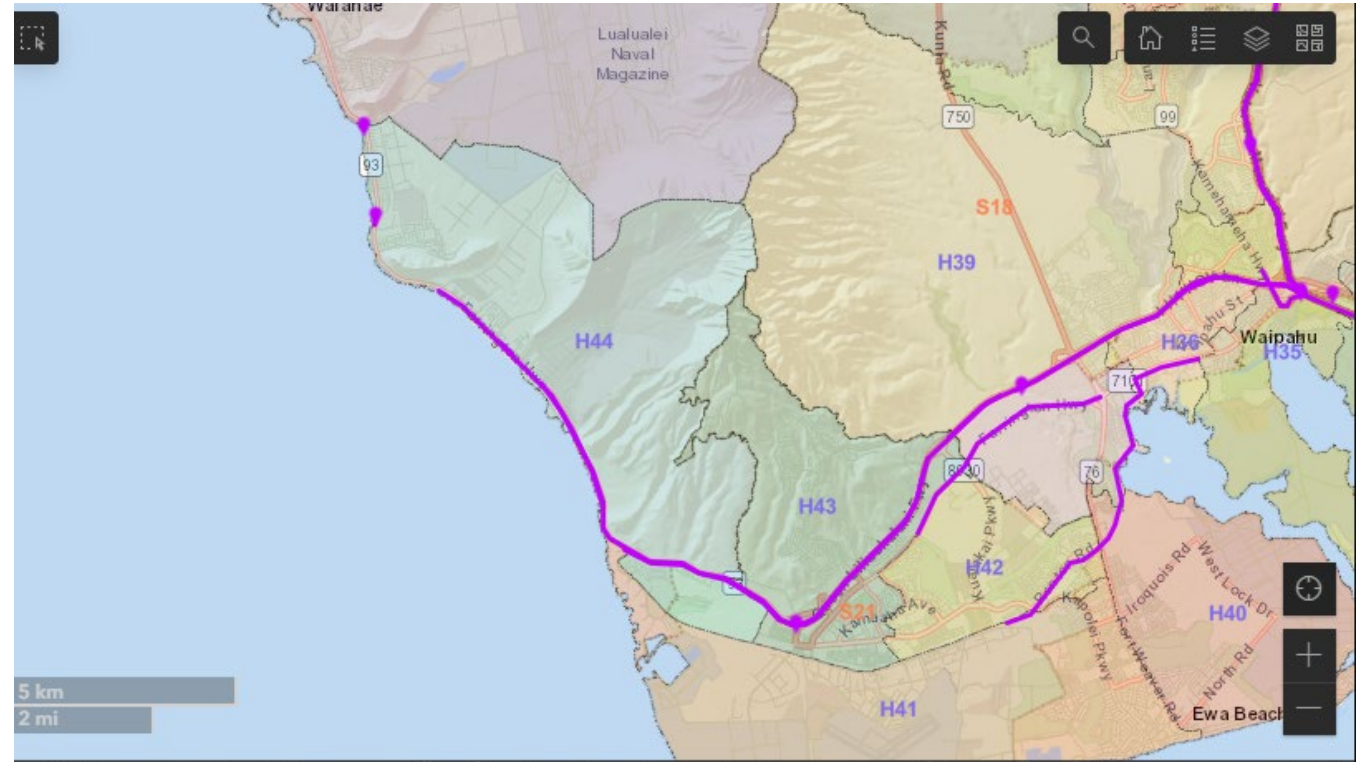
Farrington Highway widening

Paakea Road Improvements

Ulehawa Bridge replacement

Ma'ili'ili Stream Bridge
rehabilitation

Kaupuni Stream Bridge
rehabilitation





FARRINGTON HIGHWAY WIDENING – HELELUA TO MOHIHI

- Extension of 5th lane to Mohihi Street
- Extension of shared use path on the Makai side
- Upgrade Mauka sidewalk
- Project Advertisement: December 2025 (need EA)
- Est. Cost: \$45 M



PA'AKEA ROAD IMPROVEMENTS

- Scope: Improve Pa'akea Road to open for public use from Mā'ili'ili Road to Lualualei Naval Road, 2.66 miles.
- Est. Cost: \$8.45 M
- Est. Schedule: Start of construction in mid-2026 following completion of agreements, land acquisition, and design/bid process.
- 24/7 access after completion of environmental – Est. 9 months



FARRINGTON HIGHWAY, ULEHAWA STREAM BRIDGE REPAIRS & REPLACEMENT

- Repairs: Add steel barrier to support load.
 - Est. Cost \$900 K
 - Advertised in January, Start Fall 2023
- Scope of replacement work:
 - Replace bridge
 - Solution to reduce sand build up
 - Projected advertisement: late 2025
 - Est. Cost \$22 M
- Bridge built in 1963, Priority No. 26

MĀ'ILI'ILI STREAM BRIDGE REHABILITATION

- Scope
 - Performing spall repairs of bridge deck, girders and wingwalls
- Projected start date: Spring 2027
- Est. Cost = \$12 M
- Bridge was built in 1949



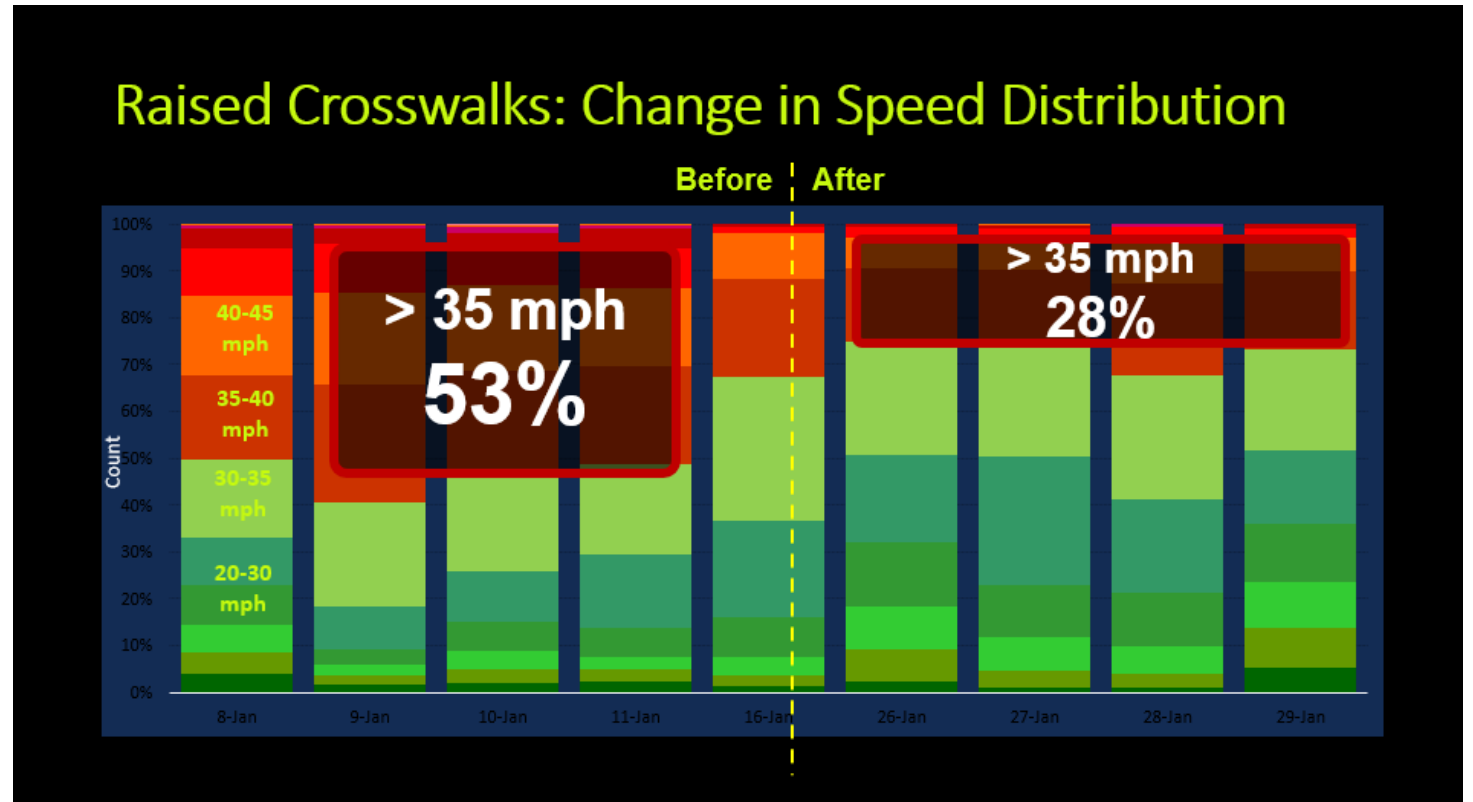
KAUPUNI STREAM BRIDGE REHABILITATION

- Scope:
 - Repair spalls and delaminations in concrete pier caps and abutments
 - Repair concrete spall and delaminations in bridge deck and railings
- Est. Cost \$14 M
- Projected start date: Summer 2027
- Bridge was built in 1937



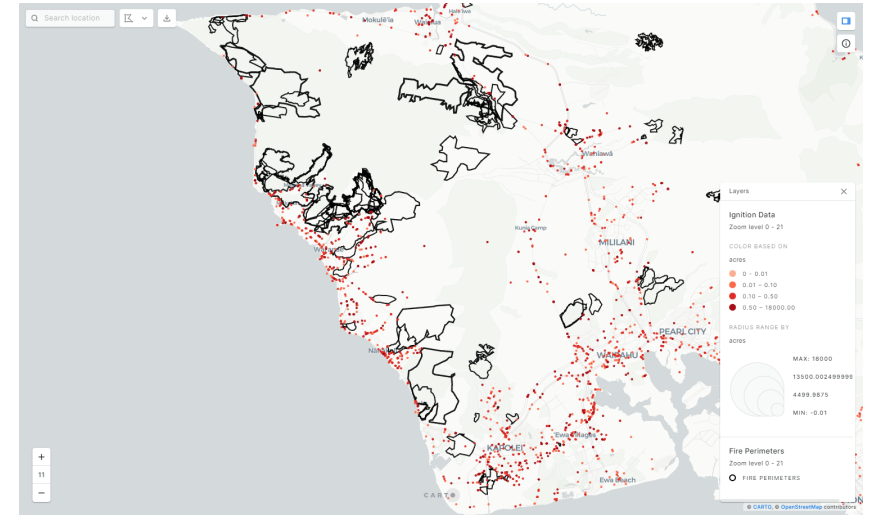
MĀ'ILI RAISED CROSSWALKS

- Installing raised crosswalks in November at:
 - Farrington Highway and Beach Park Road/7-11
 - Farrington Highway and Manununu Street
 - Farrington Highway and Alapaki Street



VEGETATION MANAGEMENT PLAN

- HDOT is coordinating with HFD to prioritize areas for vegetation management.
- Work began early September to cut dry, overgrown vegetation along Farrington Hwy. in Honokai Hale, Mākaha, Ka'ena.
- Water tankers are being staged with maintenance crews as preventative measure during vegetation management.
- Additional prioritized areas on westside include:
 - Kili Drive
 - Varona Village





MAHALO

<http://hidot.hawaii.gov/presentations>