

Traffic Emergency Zone Designation

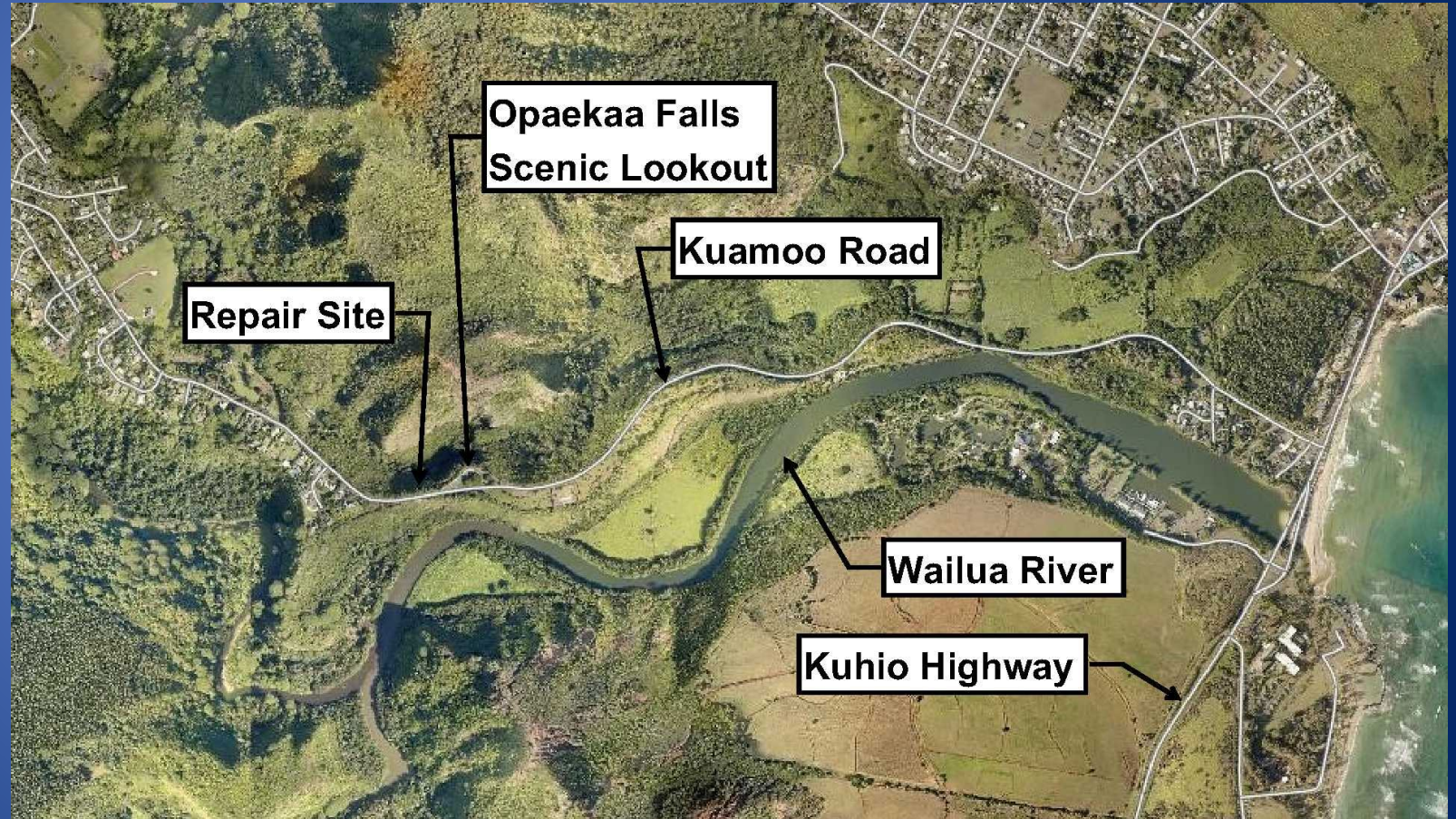
Kuamoo Road Route 580 MP 1.7

Wailua, Kauai, Hawaii

Traffic Emergency Zone Designation

Kuamoo Road Route 580 MP 1.7
Wailua, Kauai, Hawaii

- Notification of Hazard
 - On December 15, 2023, inspections indicated that surface roadway distresses had worsened to indicate signs of slope failure



Traffic Emergency Zone Designation

Kuamoo Road Route 580 MP 1.7

Wailua, Kauai, Hawaii

- Traffic Emergency Zone

- Hawaii Revised Statutes §264-1.5 Emergency powers; traffic emergency zones

“... if the ... state director of transportation, in the case of a state highway ... determines that substantial endangerment to public health and safety is or is highly likely to be caused by the temporary closure of, or the lack of adequate access to an area by ... a state highway as defined under section 264-1(a), which requires immediate action, the ... state director of transportation, in the case of a state highway, ... without a public hearing, may designate the area to be a traffic emergency zone, and may take any action that may be necessary until access to the designated area has been established.”

- What does the designation of a traffic emergency zone do?

This allows for expedited procurement and waives certain permitting requirements.

Traffic Emergency Zone Designation

Kuamoo Road Route 580 MP 1.7

Wailua, Kauai, Hawaii

- Plan of Action
 - Remove loose and unstable debris and vegetation
 - Install 5 ft. by 5 ft. grid pattern of 30 ft to 40 ft long “soil nails” embedded into the slope
 - Install reinforced shotcrete wall; height and length to be determined by current ongoing assessment
 - Project duration dependent on size of wall
 - Work will require single lane closure until slope is sufficiently stabilized



Traffic Emergency Zone Designation

Kuamoo Road Route 580 MP 1.7

Wailua, Kauai, Hawaii

Questions?