

Honoapiilani Realignment Background

- Phase 1A – Linked Keawe Street to Lahainaluna Road with 1 mile of new highway. Opened March 2013. Cost \$77 M.
- Phase 1B-1 – 1.7 miles from Lahainaluna Road to Hokiokio Place. Opened December 2013. Cost \$28.5 M.
- Phase 1B-2 – 2.7 miles from Southern Terminus to Hokiokio Place. Opened March 2018. Cost \$38.7 M.
- *Southern Extension (Honoapiilani Highway Improvements Ukumehame to Launiupoko)* – Currently in Design/Environmental. Construction expected to begin in 2025. Est. Cost \$160 M.
- *Proposed Phase 1C* – Between Keawe Street and Kakaalaneo Drive. Estimated cost \$120 M.

Southern Extension Honoapiilani Highway Improvements – Launiupoko to Ukumehame

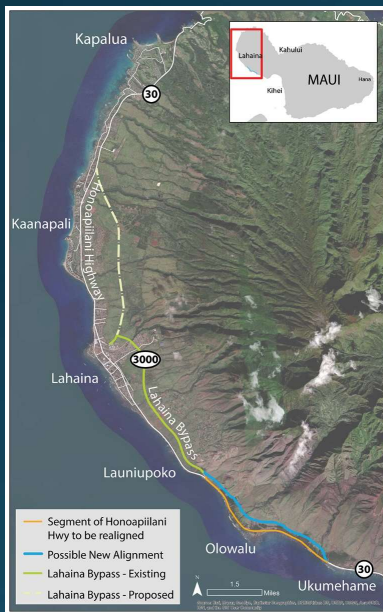
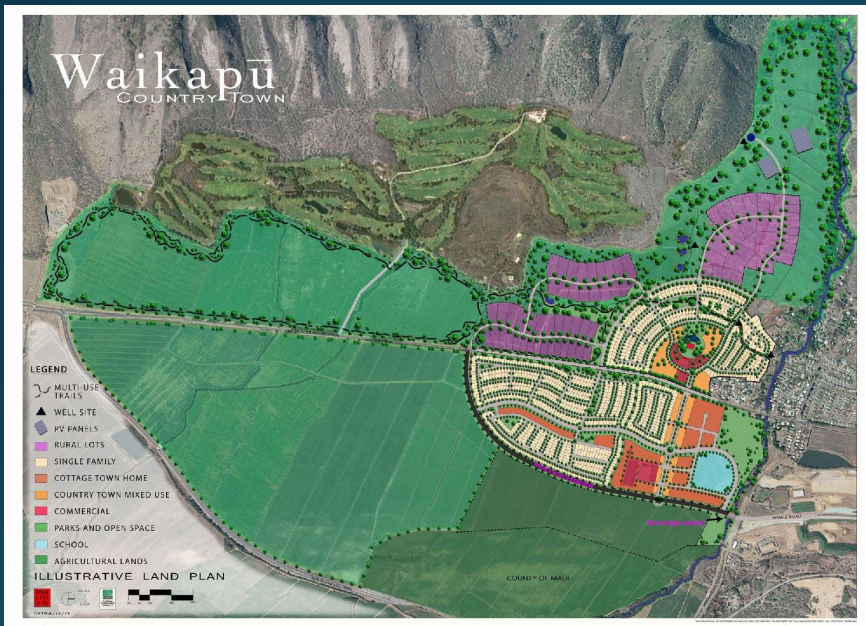


Figure 3: West Maui



- Aligns with resilience goals
 - Addresses priority sites for coastal highway protection
 - Olowalu/Mopua – Ranked 2
 - Ukumehame – Ranked 12
- Aligns with Biden-Harris Administration Climate goals
- Awarded \$22 M RAISE Grant (FFY 2021 Cycle)
- Awarded \$23 M in Congressionally Directed Spending

Priority Projects



- Waiale Road Extension
 - Est Cost \$60 M
 - Awarded \$25 M RAISE
- Liloa Drive Extension
 - Est Cost \$50 M
 - Awarded \$25 M RAISE
- Puunene Avenue Improvements

Rental Car Surcharge

NUMBER OF VEHICLE DAYS (FORM RV2)					
Maui County	CY2018	CY2019	CY2020	CY2021	CY2022
Jan	559,519	532,652	562,189	269,788	435,488
Feb	568,343	584,186	525,736	282,246	427,176
Mar	591,433	708,421	443,385	377,802	492,891
Apr	473,545	561,561	27,119	388,946	487,488
May	513,975	505,142	23,706	409,342	
Jun	475,814	518,207	27,082	412,088	
Jul	542,912	470,842	31,426	426,573	
Aug	490,676	516,798	24,440	419,114	
Sep	440,780	362,980	21,910	350,042	
Oct	481,811	504,936	49,386	395,168	
Nov	497,686	498,488	170,895	406,132	
Dec	473,888	515,846	225,613	404,433	
Total	6,110,382	6,280,059	2,132,887	4,541,674	1,843,043

- Intended to fund capacity projects with collection of rental car surcharge fee
 - \$3/day from 2018 – 2019
 - \$5/day from July 1, 2019 - December 31, 2021
 - \$5.50/day from January 1, 2022, to present
- Priority projects using the funding available are:
 - Honoapiilani Highway Improvements Launiupoko to Ukumehame
 - Puunene Avenue Improvements

Options for Federal Innovative Financing

- Grant Anticipation Revenue Vehicles (GARVEEs)
 - Used as a term for a debt instrument that has a pledge of future Title 23 Federal-aid funding. Interest rate subject to bond sale.
 - Transportation Infrastructure Finance and Innovation Act (TIFIA)
 - TIFIA credit assistance is often available on more advantageous terms than in the financial market. The exact terms for each loan are negotiated between the USDOT and the borrower, based on the project economics, the cost and revenue profile of the project, and any other relevant factors.
 - **Secured (direct) loan** - Offers flexible repayment terms and provides combined construction and permanent financing of capital costs. Maximum term of 35 years from substantial completion. Repayments can start up to five years after substantial completion to allow time for facility construction and ramp-up.
 - **Loan guarantee** - Provides full-faith-and-credit guarantees by the Federal Government and guarantees a borrower's repayments to non-Federal lender. Loan repayments to lender must commence no later than five years after substantial completion of project.
 - **Standby line of credit** - Represents a secondary source of funding in the form of a contingent Federal loan to supplement project revenues, if needed, during the first 10 years of project operations, available up to 10 years after substantial completion of project.
 - USDA RUS program
 - Loans for counties only for rural areas
- To advance the construction of Lahaina Bypass Phase 1C, GARVEE or TIFIA may be used as the financing mechanism. This would commit an estimated \$7M to \$8M annually for the next 20 years of federal annual obligation plus the local match.
 - The EIS for Phase 1C will need to be re-evaluated and a design-build RFP developed. This would take approximately 3 to 4 years. The procurement and construction would be another 3 to 4 years.



Lahaina Emergency Funding

- Lahainaluna Evacuation Route - \$1.75 M (Includes access gate for Kelawela Mauka)
- Requested and received \$3.0M in ER FHWA quick release funds.
 - Maui State: \$480,000 - Temporary Traffic Control
 - Maui State: \$1,580,000 – Dust Fence to protection of highway users of hazardous dust from burn zone.
 - Maui County: \$200,000 - Temporary Traffic Control
 - Maui County: \$740,000 - Emergency Drain Repair
- Requesting ER FHWA:
 - Maui State - \$30.0M
 - Stormwater Contamination Mitigation (BMPs)
 - Ferry Terminal reconstruction
 - Five traffic signal replacement
 - Signs, guardrail, striping, pavement markers and paving on Honoapiilani Highway
 - Maui County - \$17.0M
 - BMPs
 - Waine'e St traffic signal replacement
 - Signs, Striping, pavement markers and Paving Fed-Aid routes
- Fire breaks
 - 126.8 acres \$1,877,546
 - Completed: Kahanaiki Gulch, Kapalua Airport, Maui Meadows, Hale Piilani Park, HECO Kihei Substation, Maalaea Bay Place, Kananakui Road, 3660 Lower Honoapiilani, HWY 30 between Akahale and Hui
 - Anticipated: Kahului Airport (7 Acres)