

Waimea Community Association

September 5, 2024



Topics

DKI extension

KOA 17-35

Kawaihae Harbor improvements

State Hwys thru Waimea town

Waiaka bridge

Kohala Coastal Corridor

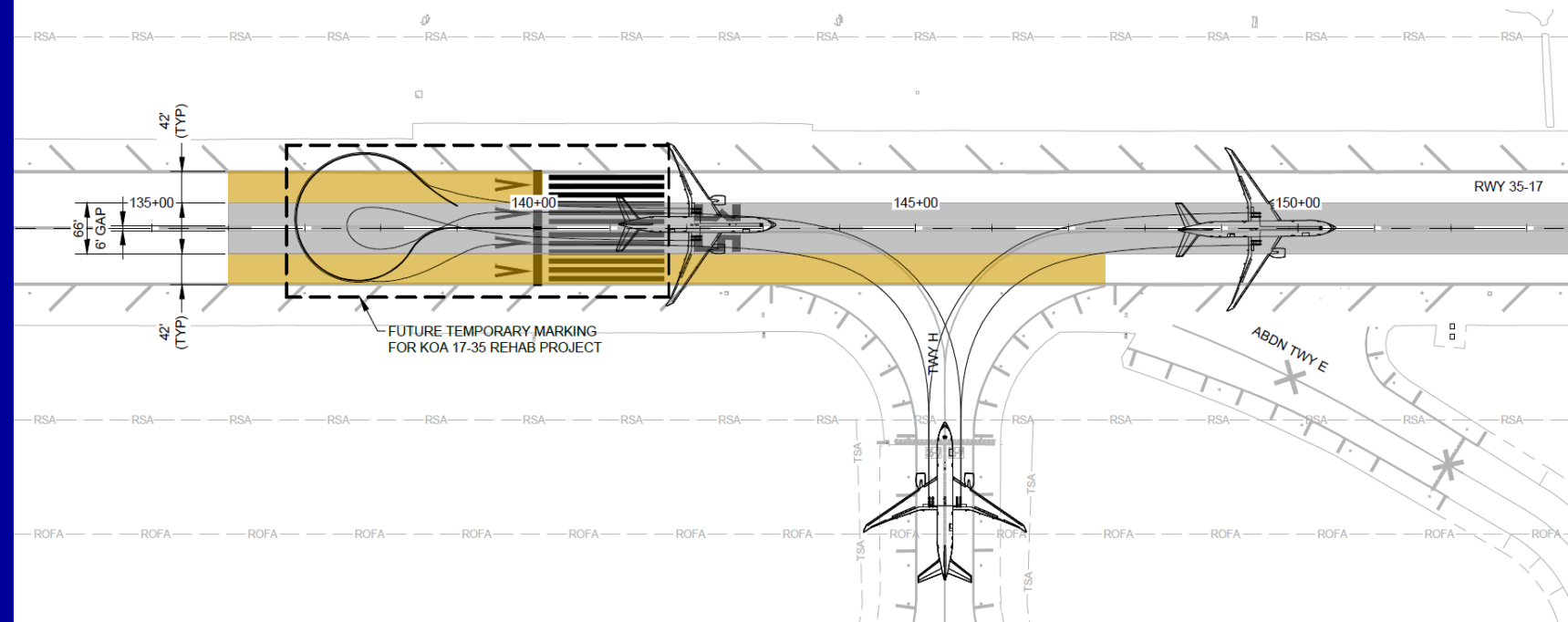
NEVI

Raised Crossings

Fire Breaks

KOA Runway Rehabilitation

- Currently in preconstruction (continuing to submit agreements with FAA and complete environmental such as the CATEX, pre-order long lead materials, core existing pavement, and develop new batch plant in Kona)
- Will close nightly from 11 p.m. to 6 a.m. from Oct. 1 through Oct. 25 to modify markings so runway can open during construction
- Pre-construction Priority 2 areas Oct. 1-25 nightly closures; Full runway rehabilitation Construction start Nov. 1 - estimated completion April 2026



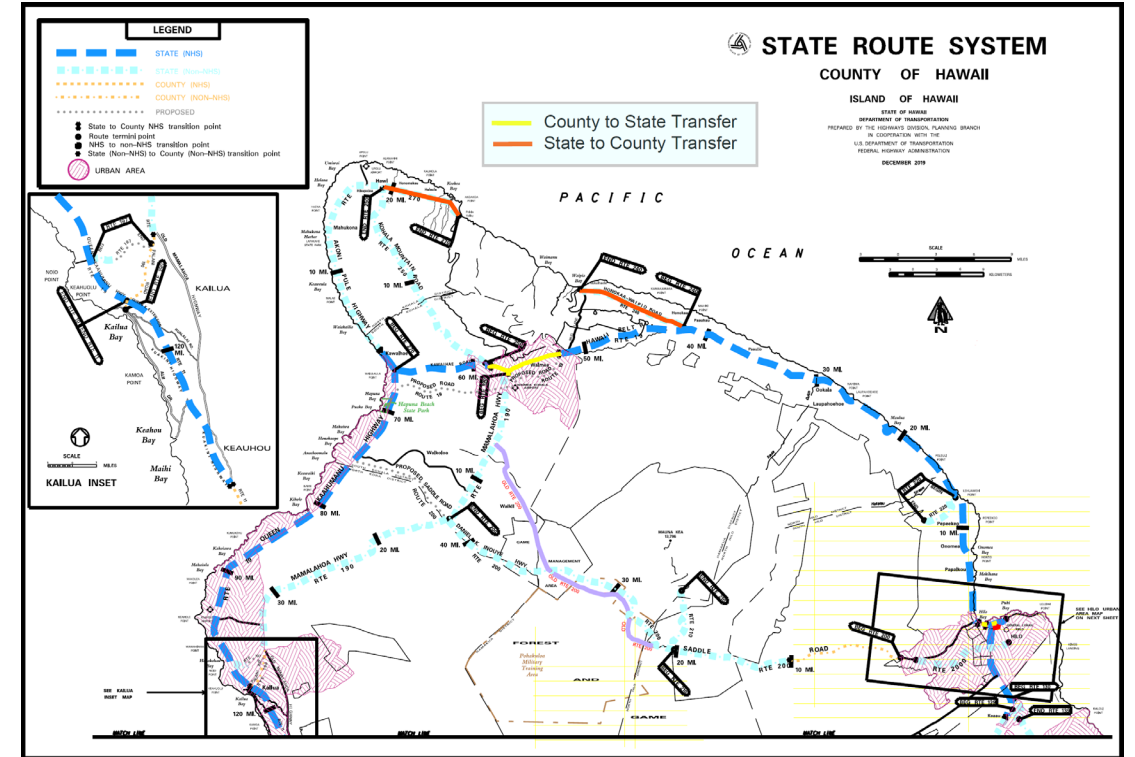
Port of Kawaihae

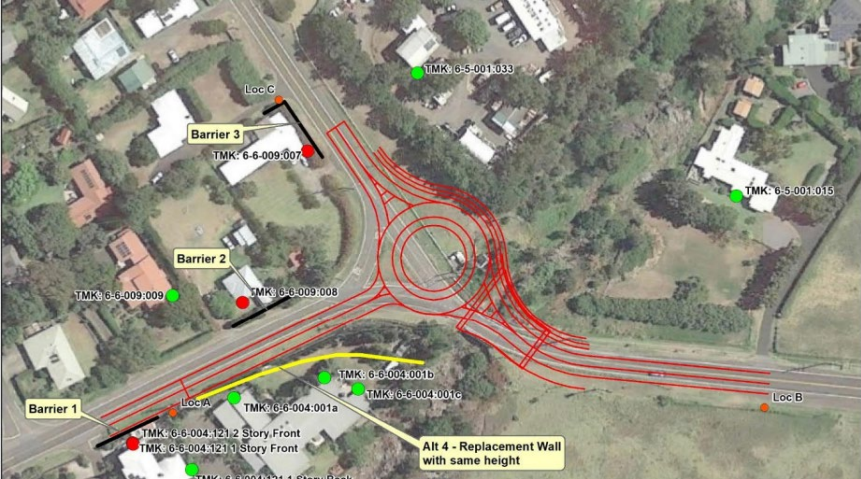
- HDOT received \$23.46 million through the U.S. DOT Port Infrastructure Development Program covering 70% of project costs
- Planned improvements
 - Widen Kawaihae Road, add left-turn/storage lane at main port gate
 - Replace asphalt with concrete on 10 acres
 - Install higher 80-foot mast lighting in cargo yard
 - Relocate office building and maintenance shed
- Expected outcomes
 - Reduced congestion on Kawaihae Road; vehicles can bypass truck queue
 - Easier, faster container movements with more hardened concrete area
 - Improved safety with better lighting in cargo yard
- Project Schedule
 - Q3 2024 - NEPA and Section 106 consultation
 - Q3 2025 - Design completion, project out to bid
 - Q1 2026 - Construction begins (2 years)



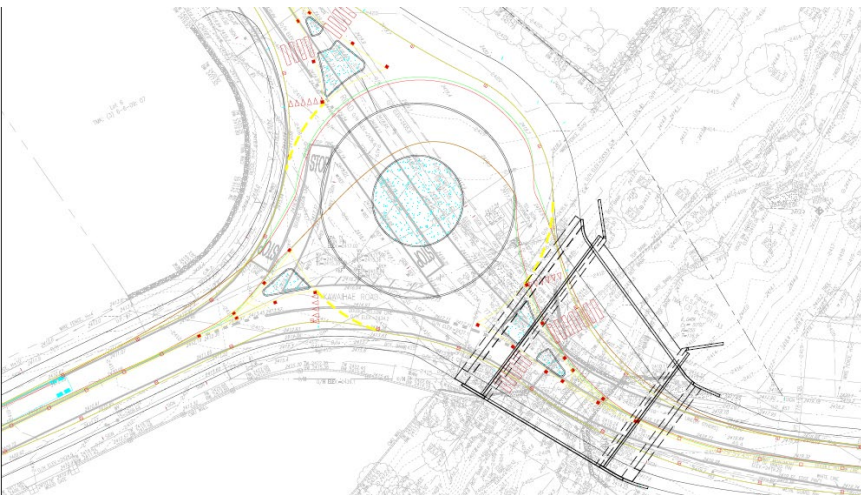
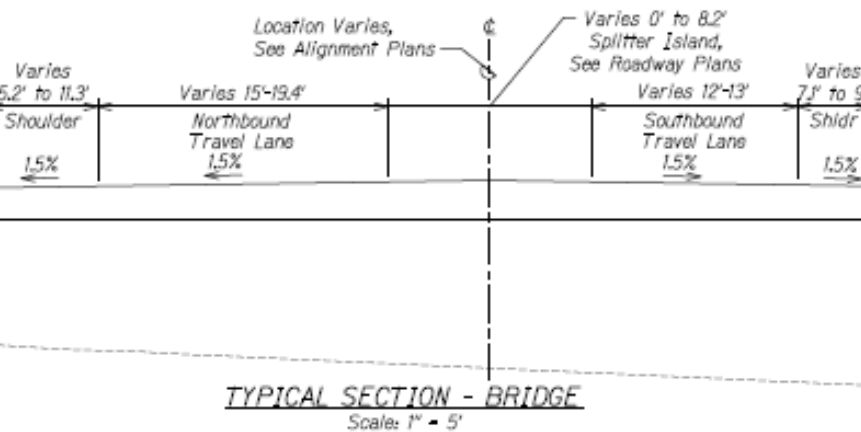
Mamalahoa Highway in Waimea

- Mamalahoa Highway (Rte 11) transferred to state in December 2021
- Need \$750,000 in state match to obligate federal funds
- Rte 190 MM 0-1
 - Resurfacing using PMA
 - Est cost \$3.7 M
 - Duration - 100 working days once funding is secured
- Rte 190 MM 12.28-16.42
 - Resurfacing using PMA
 - Est cost \$8.2 M
 - Duration - 90 working days once funding is secured





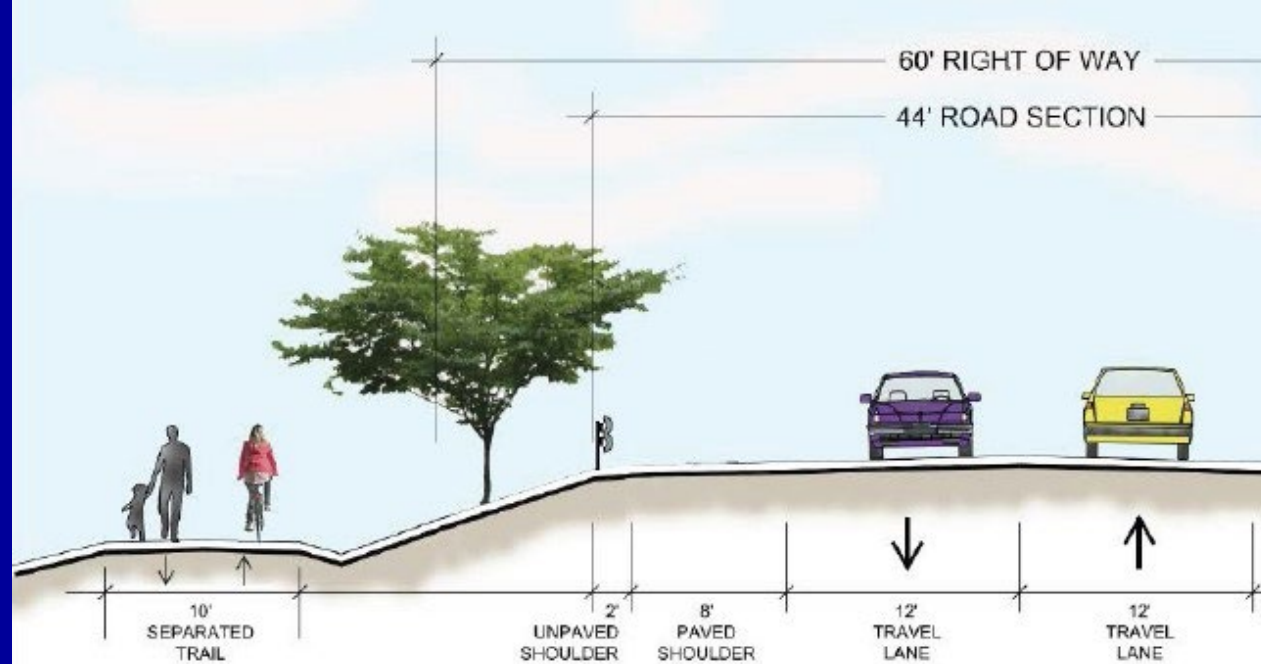
Kawaihae Road - Waiaka Bridge Replacement and Roundabout at intersection with Kohala Mountain Road



- New bridge will have a 12-foot shared use path for pedestrians, bicyclists, and equestrians
- Designed for WB-67 (typical large trucks on this corridor are WB-50) - See path (red line) on bottom drawing
- Designed diameter is 130-feet
 - 18-foot roadway
 - 25-foot truck apron
 - 22-feet to center on all sides of roundabout
- Construction schedule
 - Ready to advertise - December 2024
 - Est start of construction - Mid 2025
 - Duration 18 months

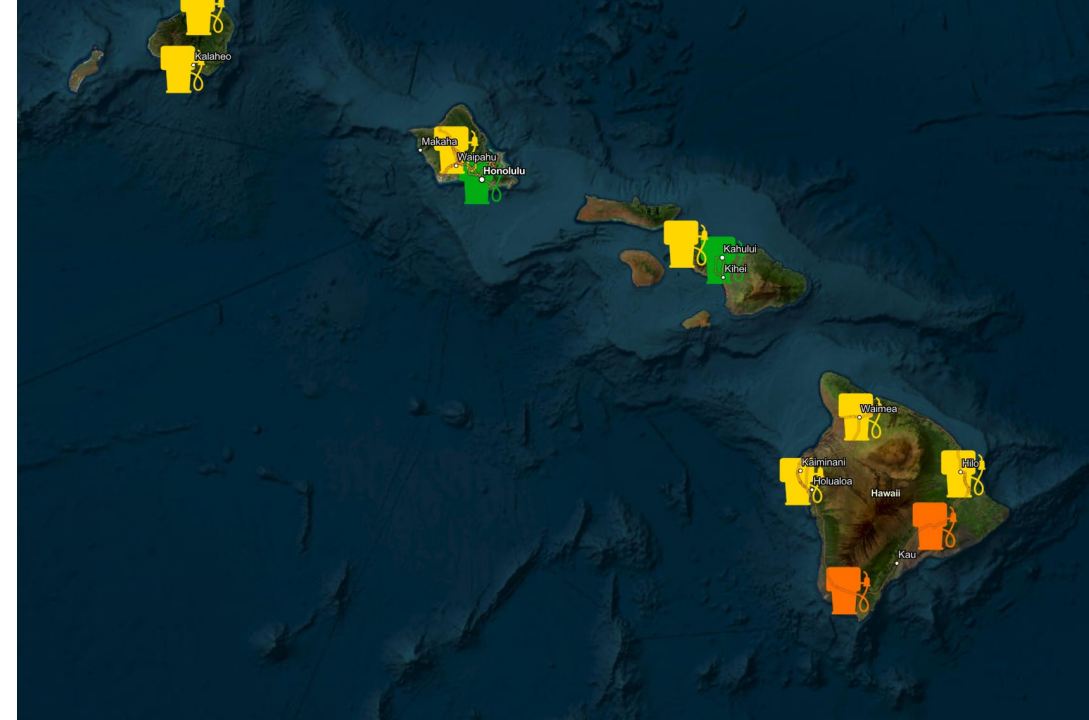
- Active Transportation Infrastructure Investment Program (ATIIP) application submitted June 28
- Joint grant application with DLNR to create new multimodal paths
- Seeking \$1.84 M in federal-aid and \$481,876 in state funds to plan, conduct community engagement

ATIIP Application

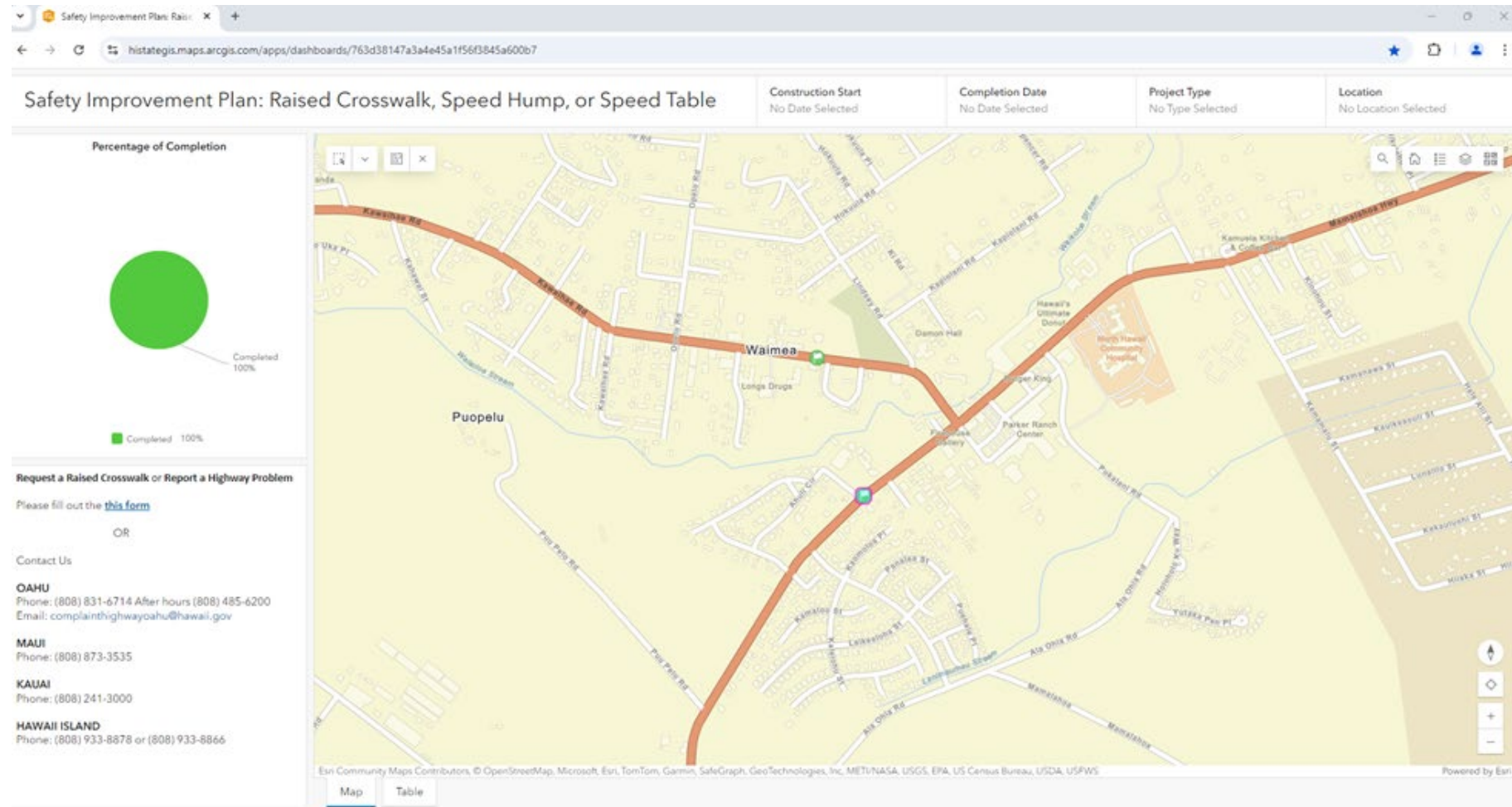


NEVI

- Planned West Hawaii sites:
 - West Hawaii Civic Center
 - Waimea Civic Center
- Design to be completed by December
- Take our survey at <https://arcg.is/1eufDW1>



Raised Crossings



- HWY 19 - Kawaihae Road fronting Waimea Community Center
- HWY 190 - Hawaii Belt Road and Ulu La'au Lane
- Installed May 2023

Fire Breaks

- HDOT is working with county fire departments to prioritize vegetation management, fire breaks.
- Cleared or planning to clear 500 acres statewide; \$9.18 M
- 280 acres on Hawaii Island, including 150 acres in Waimea-Kohala area:
 - DHHL Kailapa Homestead - 22.9 acres
 - Kohala Ranch Subdivision - 27.27 acres
 - Waikoloa Lands - 25.09 acres
 - Parker Ranch/Puukapu DHHL/Mana - 27.27 acres
 - Kawaihae Village - 0.3 acres
 - HWY 19 Kiholo (MP 67-69) - 5.0 acres
 - HWY 19 Waiaka Bridge to Kawaihae (MP 61-67) - 3.9 acres
 - HWY 190 Waimea to West Hawaii Concrete (MP 1-4) - 7.5 acres
 - HWY 190 West Hawaii Concrete to Kamakoa Bridge (MP 4-11) 15.6 acres
 - HWY 250 Kohala Mountain Road (MP 2.7-7) - 6.55 acres
 - HWY 270 Akoni Pule Hwy (MP 15-19) - 8 acres

Mahalo