

**Transportation  
Update**

**Hawai'i  
Department of  
Transportation**

# Priority Freight Projects

- H-1 Eastbound Improvements, Ola Lane to Likelike Highway Off-ramp - Estimated completion Fall 2026
- Kapalama Container Terminal Phase 2 - Estimated completion Summer 2025
- Honoapiilani Highway Realignment Project - Estimated completion Spring 2027
- Waiaka Bridge and Kawaihae Road/Kohala Mountain Road Intersection Improvements - Estimated completion Winter 2026
- Kawaihae Harbor Improvements - Estimated completion Winter 2027/Spring 2028
- Wailua River Bridge - Estimated completion Summer 2025
- Hamakua Bridges
  - Nanue Stream Bridge Rehabilitation - Estimated completion early 2028
  - Hakalau Stream Bridge Rehabilitation - Estimated completion mid 2028
  - Kolekole Stream Bridge Rehabilitation - Estimated completion Summer 2029





# Truck Pre-Check Pilot



- To alleviate congestion on Nimitz during morning peak, trucks from Sand Island bound for YB will be pre-checked at the Sand Island scale
- Mondays & Thursdays, 0700-1000
- On these mornings:
  - Waiakamilo/Nimitz Gate: Open to pre-checked vehicles only
  - Libby Gate: Open to all other vehicles



# Speed Management

## Gateways



## Raised Crosswalks



## All-Way Ped Crossing



## Roundabouts





Ala Ilima & Likini St in Salt Lake  
(approx. 90 ft diameter)



Miihuna Rd & Kuhio Hwy in Kapaa



# Roundabouts

## In construction:

- Kamehameha Highway and Kahekili Highway

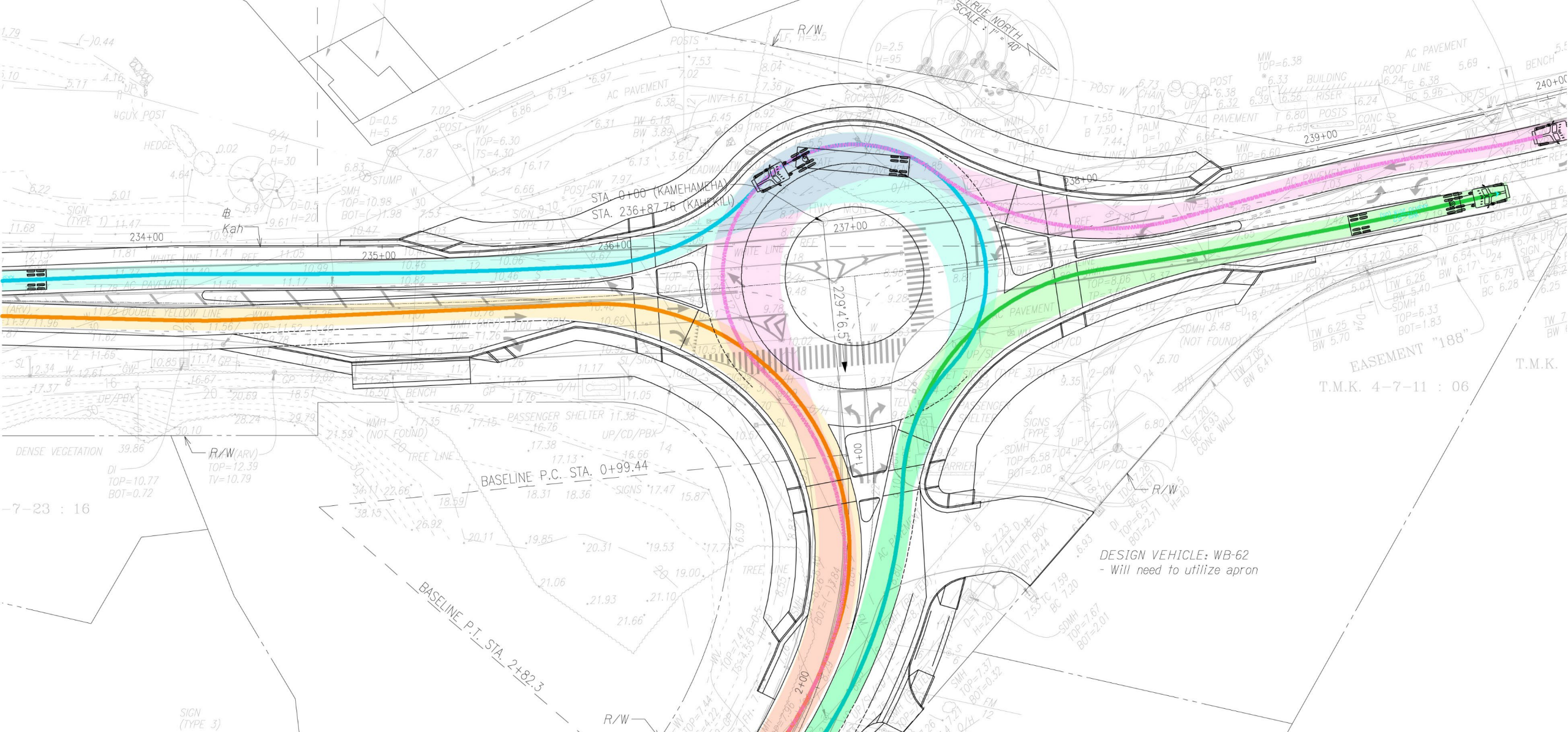
## In design:

- Hilo Bayfront/Waianuenue Avenue
- Kawaihae/Kohala Mountain Road (part of Waiaka Bridge project)
- Kawaihae/Lindsey Road
- Highway 130 and Makuu
- Highway 130 and Orchidland
- Highway 130 and Ainaloa (increasing size to 130' diameter)
- Kuhio Highway at Kolo/Kalamania Road

## Notes:

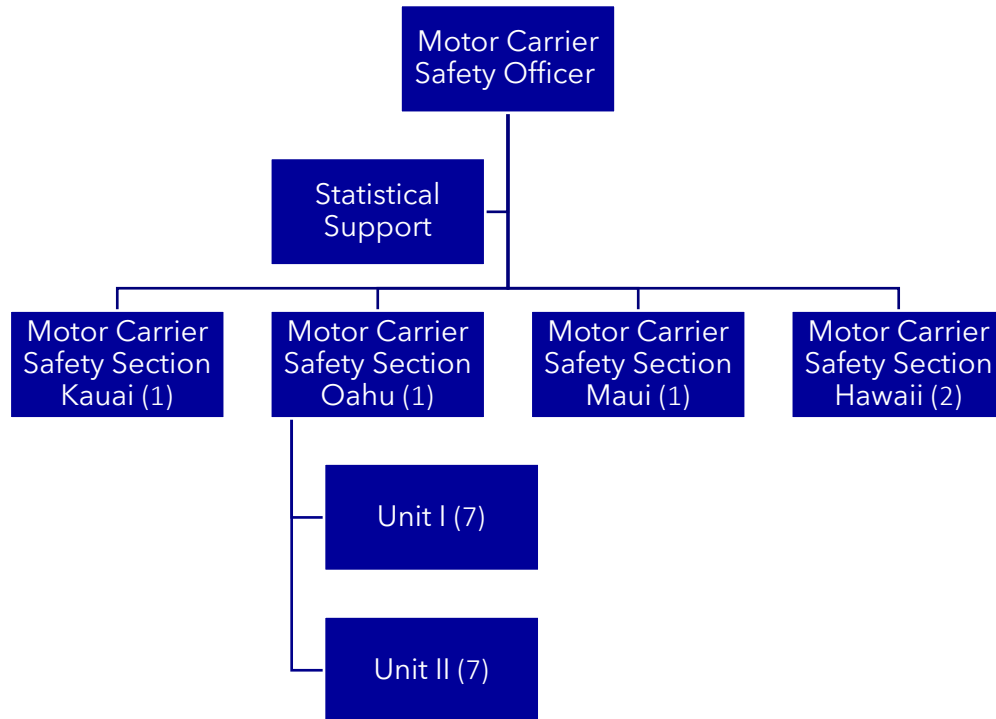
- Middle circle is designed as a truck apron to allow large vehicles to navigate without striking fixed objects or other users
- Kihei Roundabout video [https://www.youtube.com/watch?v=wSICAB\\_u2pM](https://www.youtube.com/watch?v=wSICAB_u2pM)





**Kamehameha Highway Intersection Improvements at Kahekili Highway**

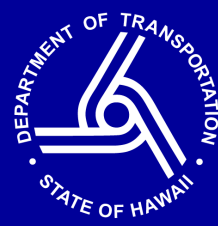
# Motor Carrier Safety Staff



Responsible for:

- Size and Weight Vehicle Program
- Motor Carrier Safety Assistance Program
- Pupil Transportation Safety Program
- Standards and Guidance for:
  - motor carrier/commercial vehicle drivers
  - Physical examinations of drivers
  - Driver training and improvement
  - Periodic evaluation of drivers
  - Motor carrier/commercial vehicle safety inspections
  - Inspection stations and inspection personnel
  - Vehicle maintenance, size, weight, and modification
  - Transporting of hazardous materials on the highway by motor carriers
- Investigation of fatal crashes involving motor carriers/commercial vehicles or as required
- Maintenance of SAFETYNET and preparation of statistical reports
- Enforcement of federal regulations
- Preparation of the statewide commercial vehicle safety plan

# Regulation & Enforcement



## HDOT

- Oversees Motor Vehicle Safety Inspection Program
- Issues Vehicle Identification Cards
- Oversees Medical Certification for CDL holders
- Level I Inspections at Sand Island, PVT, other weigh stations
  - Inspection of Driver and Vehicle
  - Checks for
    - Safety check
    - Insurance
    - Medical certificate
    - Equipment such as spare fuses
    - Verify VIC
    - Marking
- Under SB 3220 (24), PUC will transfer enforcement of Hawai'i Revised Statutes § 271 to HDOT by December 31, 2024  
*(requesting 22 positions in new unit under special project)*

## PUC

- Issues motor carrier certificates to motor carriers that transport people or property for compensation or hire over any public highway in the state
  - Requires: letters from prospective customers, vehicle inventory list, tax clearance certificate, liability coverage, motor carrier tariff
- Requires Annual Financial Report





## REAL ID De Extend

*Due to circumstances resulting from the COVID-19 pandemic and the national emergency declaration, the Department of Health is extending the REAL ID enforcement deadline.*

*The new deadline for REAL ID enforcement is May 3, 2025.*

REAL ID INFORMATION

[Read More](#) ➔

Airports

Harbors

Highways

Contracts

Disadvantaged Business Enterprises (DBE)

Statewide Transportation Planning

Public Meetings & Notices

Boards & Commissions

Property for Sale

## Resources

- Information on permits
- height clearance for bridges on Oahu
- bridge postings
- weekly planned roadwork
- current/upcoming construction

ALOHA FROM HDOT!



A wide-angle landscape photograph of a tropical coastline. In the foreground, there are lush green plants and a road with several cars. A stone wall separates the road from a sandy beach. The ocean is a vibrant blue, and a large mountain is visible in the background under a bright blue sky with scattered white clouds.

# Discussion

*Mahalo*