



'Aiea-Pearl City Townhall

Hawai'i Department of
Transportation

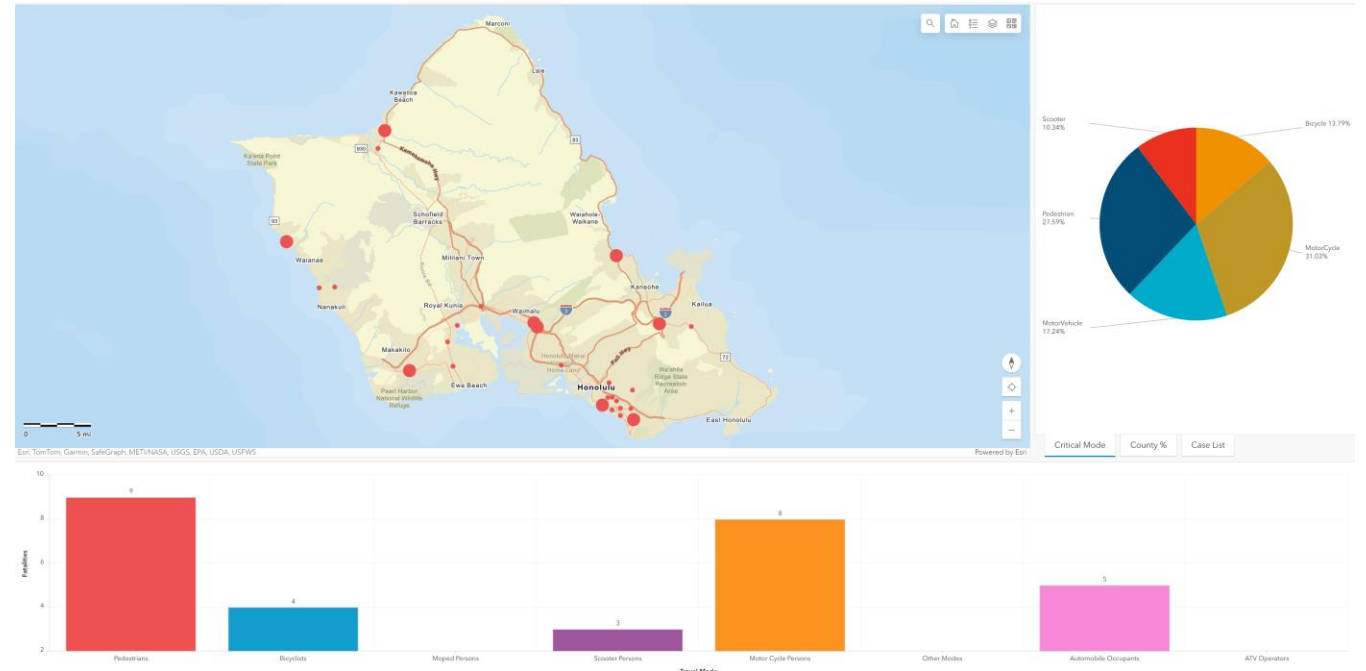
Fatal Crashes – Year to Date

68 statewide

29 on O‘ahu

In ‘Aiea:

- Sept. 1 at 12:30 a.m. on H-1 eastbound
 - Motorcycle rear-ended another motorcycle
 - Both riders ejected onto roadway, 1 fatality
 - Speed and hit-and-run were identified as contributing factors
- May 3 at 8:10 p.m. on Moanalua Freeway near Moanalua Road exit
 - Pedestrian walked into the path of a motorcyclist
 - Not a legal crossing



Raised Crosswalks/Speed Humps



<https://hidot.hawaii.gov/highways/safety-map/>

3 - Year Crash History prior & after installation

- 46 Locations installed from 2019 to 2021
- Total Crashes – Avg. 37% Reduction
- Pedestrian Crashes – Avg. 69% Reduction
- Serious Injuries – Avg. 55% Reduction
- Fatalities – 0

Speeds

- 85th Percentile Speeds – 30% Reduction (12 mph)
- Drivers Exceeding the Posted Speed Limit – Avg. 47% Reduction

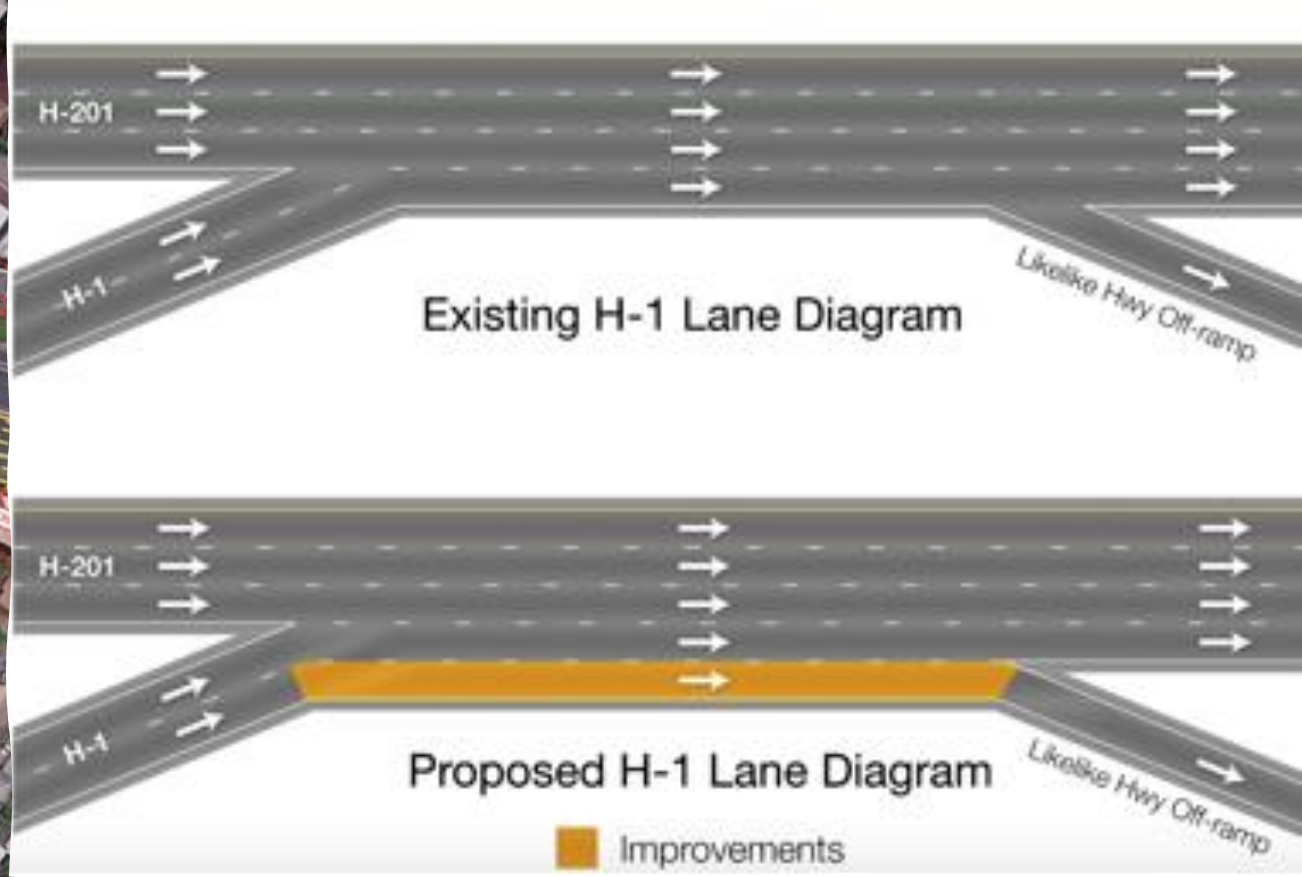
Automated Enforcement

- The two-year pilot program will conclude at the end of this November.
- Once it ends, the red-light safety program will become permanent and can be expanded.
- The counties can also proceed with implementing their own automated enforcement program.
- HDOT will keep the original 10 intersections and plan to add 8-10 new red -light/speed intersections per year on State facilities.
 - Preliminary priority list is based on intersections with a minimum of 9 crashes
 - Feasibility and engineering assessments, baseline data collection will follow for next selected intersections
- We are working on a expanding the scope of the current contract to add speed enforcement.
- The speed program is authorized to begin on Jan 1, 2025.

Rank	Primary Street	Ref Street	# Crashes	Speed Limit
1	WARD AVE	LUNALILO ST	33	25
2	MIDDLE ST	KING ST/MOANALUA FTG RD	30	30
3	FORT WEAVER RD	KOLOWAKA DR	30	35
4	LIKELIKE HWY	KAHEKILI HWY	29	35
5	KAMEHAMEHA HWY	ACACIA RD	27	35
6	MAKAKILO DR	H-1 WB OFF RAMPS	27	40
7	KAMEHAMEHA HWY	WAIMANO HOME RD/LEHUA AVE	25	35
8	KALIHI ST	NIMITZ HWY	23	25
9	VINEYARD BLVD	LILIHA ST	22	30
10	FORT WEAVER RD	GEIGER RD/IROQUOIS RD	21	35

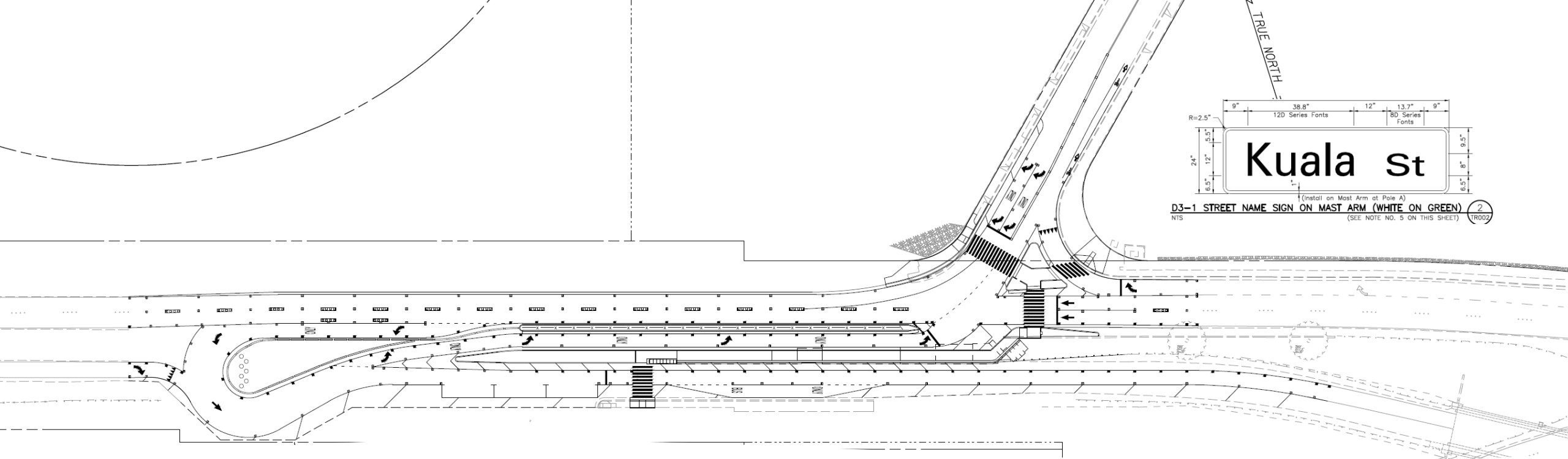
Current Projects

Project Name	Typical Work Schedule	Est. Completion
H-1 Airport Viaduct Improvements Vicinity of Valkenburg Street to Middle Street	Nightly, Tuesday – Monday, no work Monday nights 8 p.m. to 4 a.m. the following day	June 2025
H-1 Salt Lake Rehabilitation	Nightly, Friday from 8 p.m. to Monday 2:30 a.m. (Sunday closures end at 6 p.m.)	March 2025
H-1 Pearl City and Waimalu Viaduct Improvements between the Halawa Interchange and the H-1/H-2 split	Nightly, Tuesday – Friday (AM) from 7 p.m. to 4:30 a.m. Friday from 7 p.m. to 8 a.m. Saturday Saturday from 7 p.m. to 9 a.m. Sunday	March 2027 (Will suspend night work during shearwater fledgling season. In discussions with USFW for future seasons)
H-201 Moanalua Freeway Paving between the H-3 Freeway ramp and the Fort Shafter overpass	Nightly, Sunday – Friday 7:30 p.m. to 6 a.m. the following day	September 2025



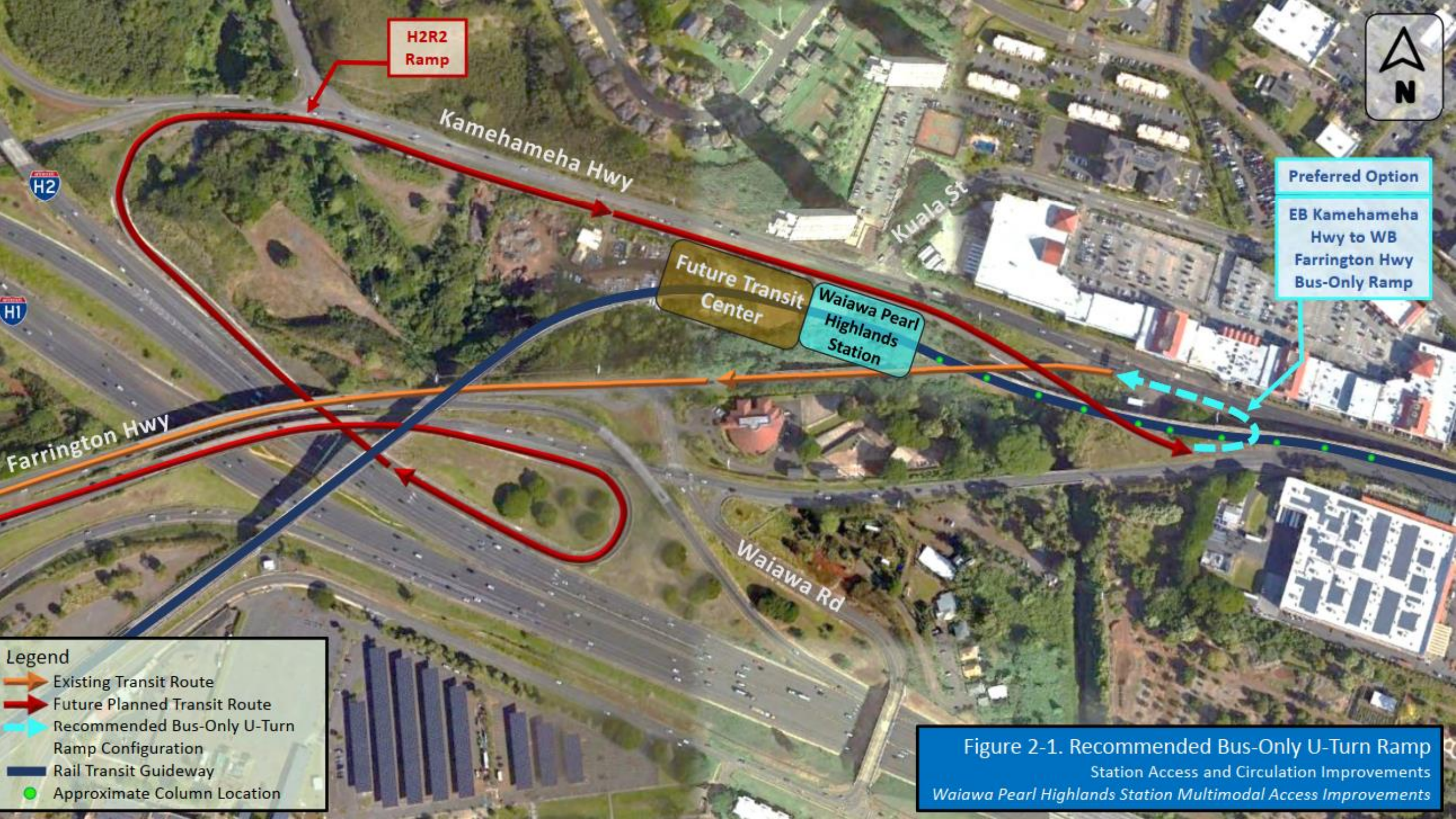
H-1 Eastbound
Improvements – Ola
Lane to Likelike Highway
Off-ramp

- Add inside and outside shoulders
- Increase lane width to 11'
- Construct retaining walls
- Lengthen Gulick Bridge on the makai and mauka sides
- Est. completion Summer 2026



Adding a left turn lane from Kuala Street onto Kamehameha Highway

- Phase 1: Design and purchase of long lead items. Advertise in October 2024, Award December 2024
- Phase 2: Construction of the left-turn lane and traffic signal system. Advertise in January 2025, Award April 2025



H2R2 Ramp



Preferred Option
 EB Kamehameha Hwy to WB
 Farrington Hwy
 Bus-Only Ramp

Future Transit Center

Waiawa Pearl Highlands Station

Kamehameha Hwy

Kuala St

Farrington Hwy

Waiawa Rd

- Legend**
-  Existing Transit Route
 -  Future Planned Transit Route
 -  Recommended Bus-Only U-Turn Ramp Configuration
 -  Rail Transit Guideway
 -  Approximate Column Location

Figure 2-1. Recommended Bus-Only U-Turn Ramp
 Station Access and Circulation Improvements
 Waiawa Pearl Highlands Station Multimodal Access Improvements

Leeward Bikeway

- Completion on track for late September
- Last few weeks of work included:
 - Kapakahi – Removal of temp steel support, install of slabs and bridge end posts, install of removable bollards, prep work for the PCC section of the bike path
 - Waikale – Removal of temp steel support, install of slab, prep of girders, removal of utility pole by HECO, Hawaii Gas link seal install, and install of French drain



Navahine



Navahine Climate Litigation Highlights

Settlement Agreement Term

Take any actions needed to achieve the goals in **§225P-8**

Complete and update GHG Reduction Plan with prior notice and comment period for youth plaintiffs

Implement a Public Education Program to support the GHG Reduction Plan and decarbonization work

Use long-term GHG emissions and VMT Impact methodology, once developed, as part of project scoring prioritization for transportation projects and to comment on land use development projects

Publish on website – GHG and VMT impact assessments, reports, and project scoring evaluations for each project and the Mid Range Transportation Plan and Statewide Transportation Improvement Plan

Establish and hold quarterly meetings of a volunteer Youth Council

Complete pedestrian, bicycle, and transit networks in coordination with the counties within a 5-year timeframe

At least 1,000 trees (preferably native and non-invasive) planted per year with HDOT support

Publish an Annual Report including individual project reports, GHG and VMT reduction progress (including quantitative analysis) and equity goals assessment

Expanded list
of Settlement
Agreement
Terms

