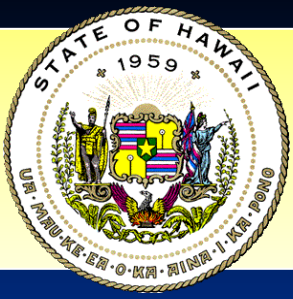


Farrington Highway Widening

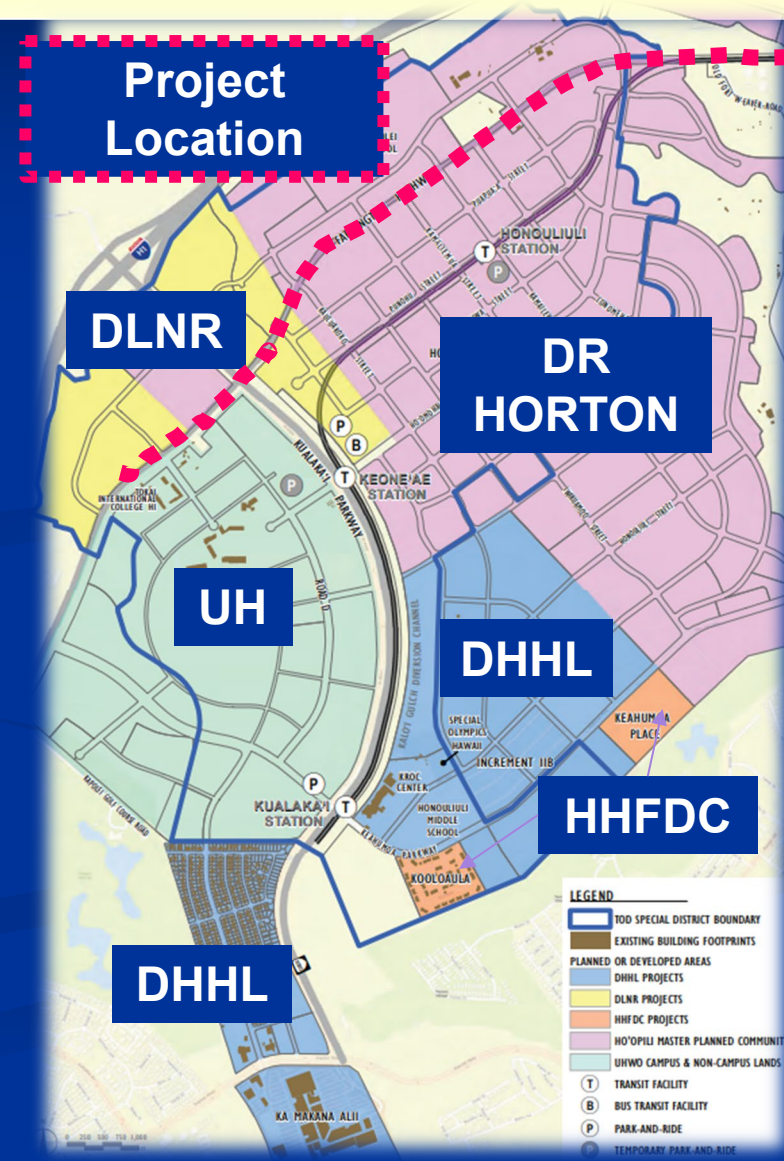
Kapolei Golf Course to Old Fort Weaver Road

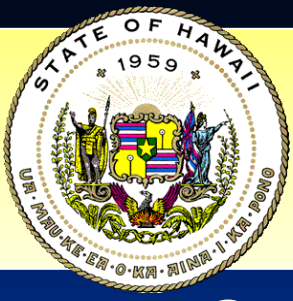
TOD Council Meeting April 11, 2025



Farrington Highway Widening

- Project location: Farrington Highway Kapolei Golf Course entrance near University of Hawai'i – West O'ahu (Kapolei) to Fort Weaver ('Ewa)
- Current facility: 2 lanes
 - Initial project plans widened to 6 lanes to meet future vehicular capacity needs
 - First revised project plans reduced to 4 lanes to better fit Farrington Highway corridor
 - Current revised project plans include 3 lanes with a turning lane
- Why 3 lanes?
 - Meets future capacity needs but provides better accommodation for bicycle and pedestrian uses.
 - Crossing Farrington Highway will be easier for pedestrians
 - Balances multimodal travelway for pedestrians, bicyclists, transit, freight and vehicles
 - Fits mixed land uses

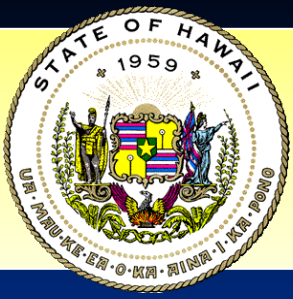




Farrington Highway Widening

Current: Two Lanes





Farrington Highway Widening

Planned: 3 lanes (2 travel lanes + 1 two-way turn lane)

MAUKA

MAKAI

8-foot sidewalk

6-foot bike lane

10.5-foot travel lane
Kapolei Bound

11-foot left turn lane
Two-way

10.5-foot travel lane
'Ewa Bound

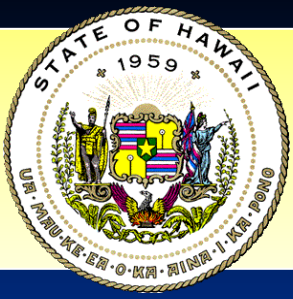
6-foot bike lane

8-foot sidewalk



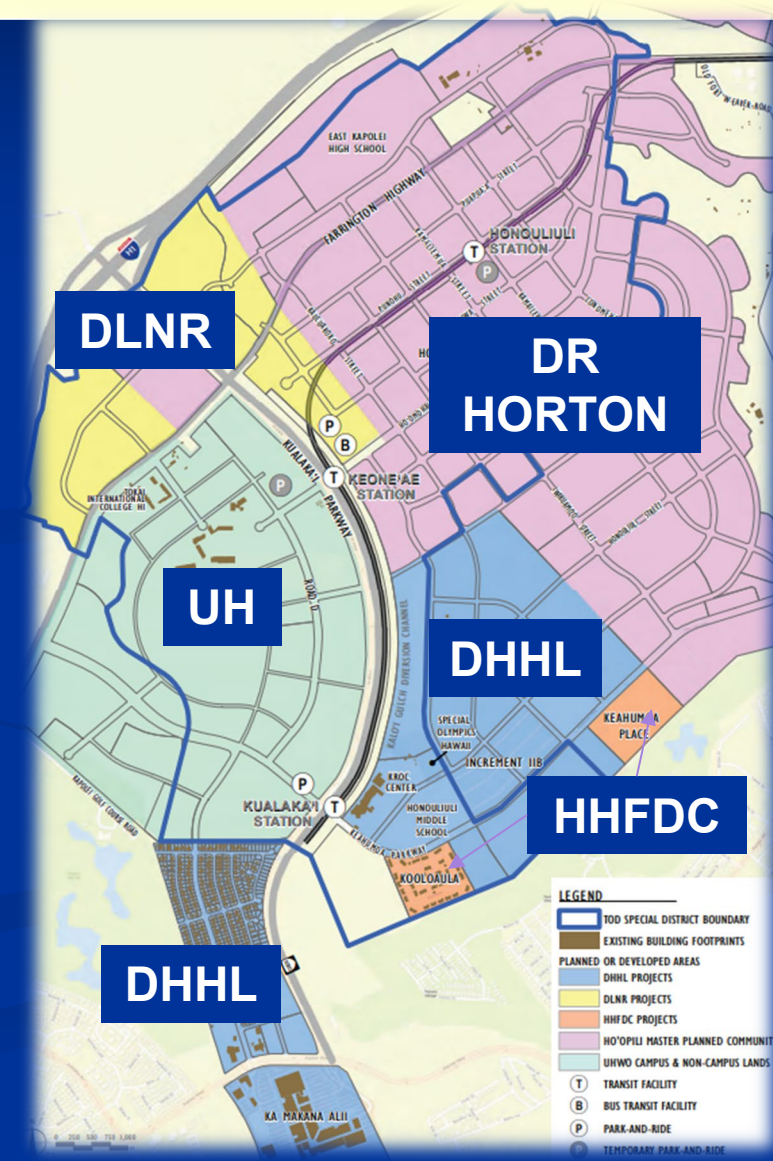
2-foot buffer

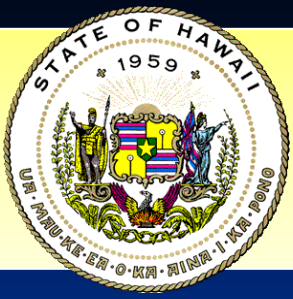
2-foot buffer



Affordable Housing Support Initiatives

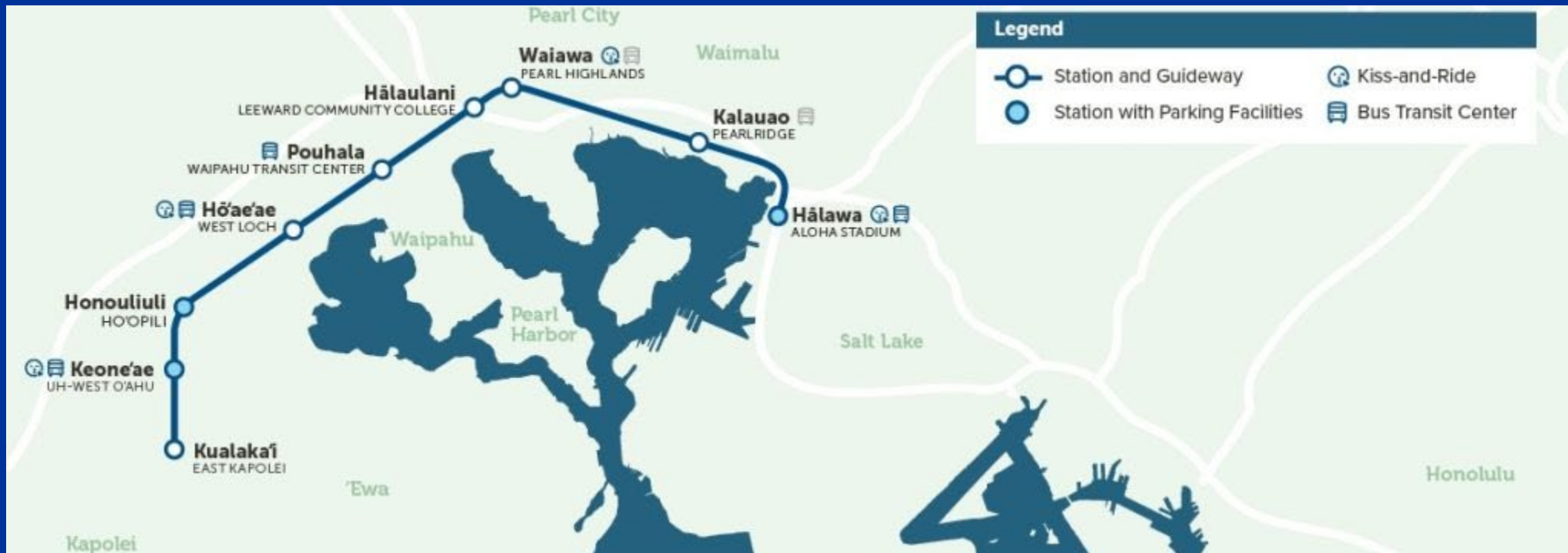
- Prioritize infrastructure projects that:
 - Incentivize developers to build more affordable units for lower income families;
 - Incentivize developers to build school facilities; and
 - Support development of commercial centers outside of primary commercial areas.

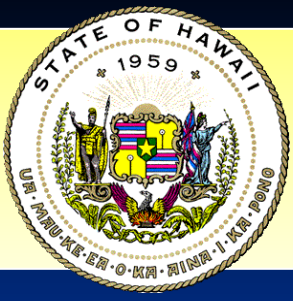




Rail Station Connectivity

- Roadway to provide connections to Kualaka'i - East Kapolei Station, Keone'ae - UHWO Station, Honouliuli - Ho'opili Station, and Ho'ae'ae - West Loch Station





Schedule

- Farrington Highway Widening, Kapolei Golf Course to Fort Weaver Road was advertised in August 2022
- Low bid was \$138 million, procurement challenged
- Est. start of construction:
 - May 1, 2025
 - Long lead items have been coordinated with contractor and Hawaiian Electric
- Anticipate 2-year construction period

Mahalo!

State of Hawaii
Department of Transportation