

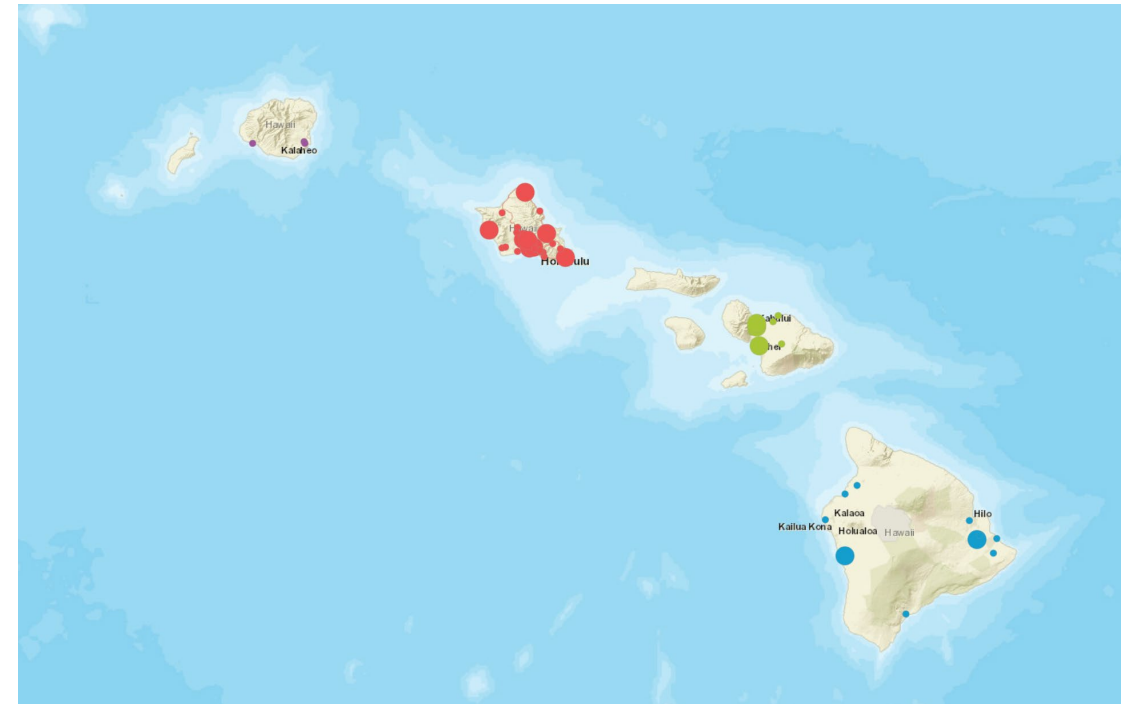


Central O'ahu Community Safety Talk

Hawai'i Department of Transportation

Highway safety - Unofficial stats

- As of April 29, we have seen 48 people killed on Hawaii roads this year to date
- 13 of the dead were motor vehicle occupants
- 15 were pedestrians (10 were unexpectedly in roadway)
- 12 were motorcyclists/scooter operators (only one helmet was found but unsure if it was in use)
- 5 were bicyclists
- 3 were other non-occupants (foot scooter or other conveyance like a one-wheel)
- Speed and impairment are suspected as a factor in half of the fatal crashes



Raised Crosswalks/Speed Humps



264 Raised Crosswalks/Speed Humps installed statewide

3 - Year Crash History prior & after installation (compared for sites with 3 years post-installation data)

Total Crashes – Avg. 37% Reduction

Pedestrian Crashes – Avg. 69% Reduction

Serious Injuries – Avg. 55% Reduction

Fatalities – 0

Speeds

85th Percentile Speeds – 30% Reduction (12 mph)

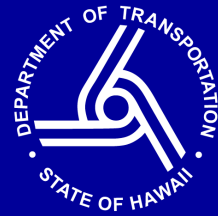
Drivers Exceeding the Posted Speed Limit – Avg. 47% Reduction

Meheula Ramps at H-2 Interchange


- Project will construct raised cross walks at:
 - H-2 Southbound off-ramp
 - H-2 Southbound on-ramp*
 - H-2 Northbound off-ramp*
- *Will include pedestrian activated rectangular rapid flashing beacons



Roundabouts



- Pre-Construction Speeds



Select Date
2021-05-18

Time Selectors
Select Hour
21


Select Quarter-Hour
30

Select Statistic
50th percentile speed

Select Statistical Time Window
60

^ Average of the selected stat
67.3 mph

- Post-Construction Speeds



Time Selectors
Select Hour
21

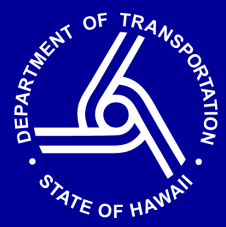
Select Quarter-Hour
30

Select Statistic
50th percentile speed

Select Statistical Time Window
60

^ Average of the stat
54.5 mph

Red-Light/Speed Cameras

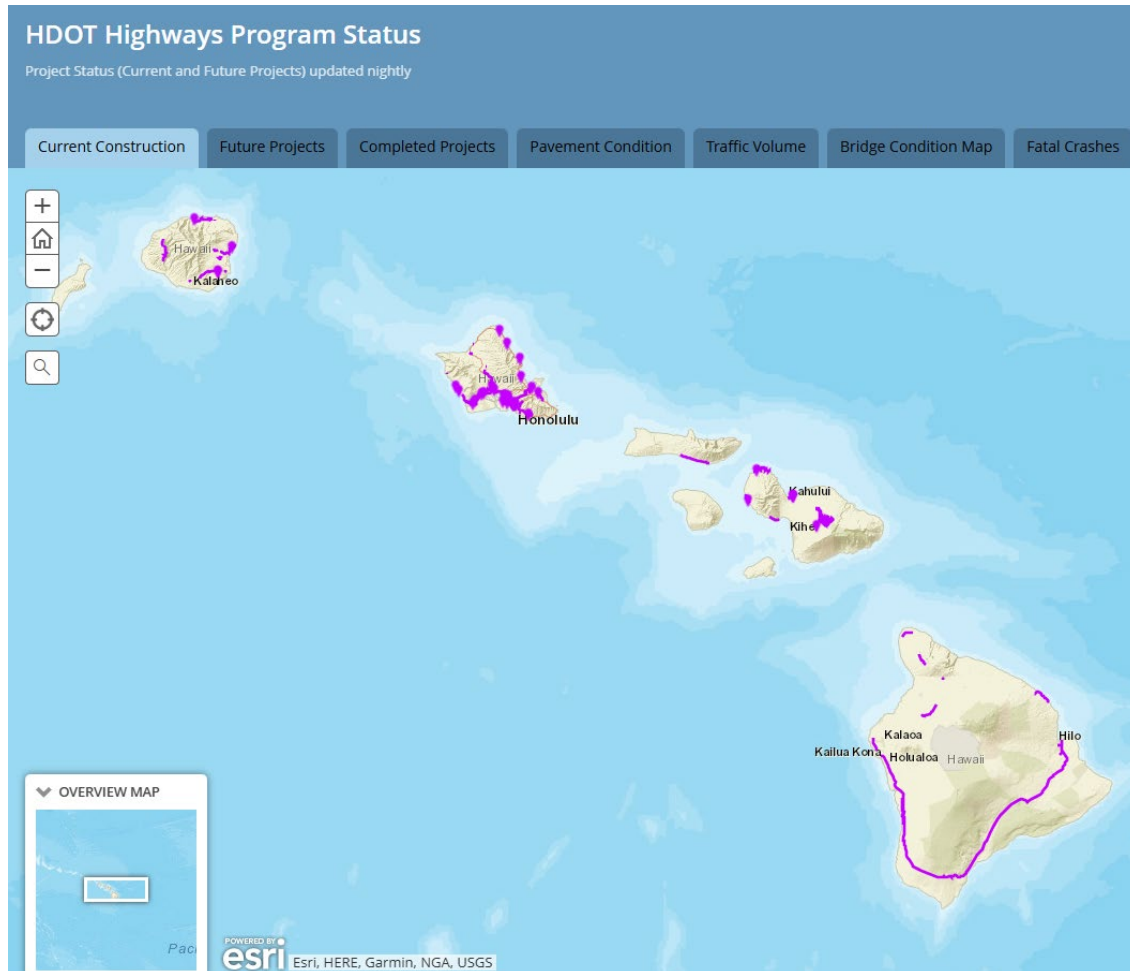


Automated Enforcement

- HDOT will keep the original 10 intersections and plan to add 8-10 new red -light/speed intersections per year on State facilities.
 - Preliminary priority list is based on intersections with a minimum of 9 crashes
 - Feasibility and engineering assessments, baseline data collection will follow for next selected intersections
- The two-year pilot program concluded November 2024.
- New 10-year contract went out for bid March 17, award expected in July
- The counties can also proceed with implementing their own automated enforcement program.

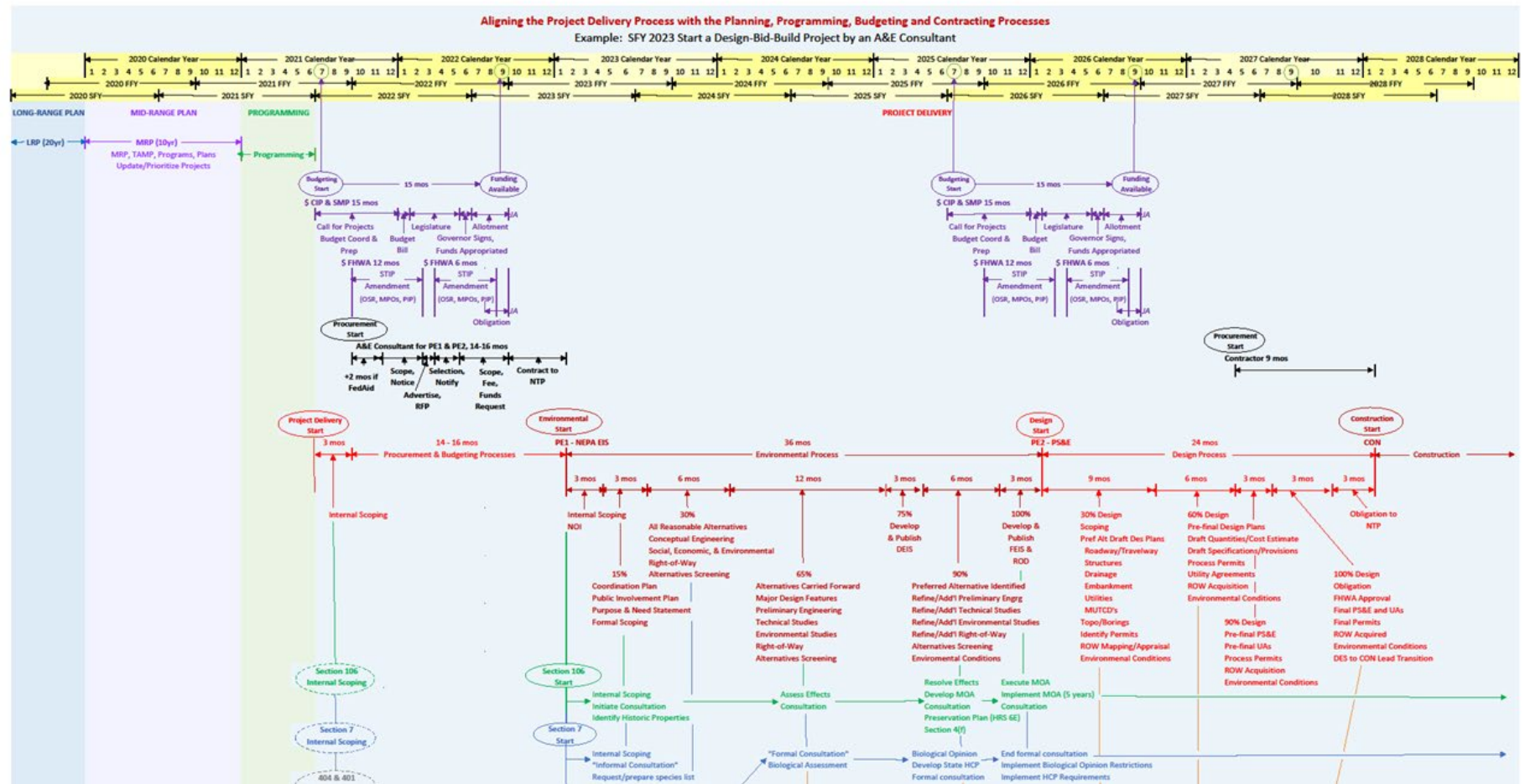
Rank	Primary Street	Ref Street	# Crashes	Speed Limit
1	WARD AVE	LUNALILO ST	33	25
2	MIDDLE ST	KING ST/MOANALUA FTG RD	30	30
3	FORT WEAVER RD	KOLOWAKA DR	30	35
4	LIKELIKE HWY	KAHEKILI HWY	29	35
5	KAMEHAMEHA HWY	ACACIA RD	27	35
6	MAKAKILO DR	H-1 WB OFF RAMPS	27	40
7	KAMEHAMEHA HWY	WAIMANO HOME RD/LEHUA AVE	25	35
8	KALIHI ST	NIMITZ HWY	23	25
9	VINEYARD BLVD	LILIHA ST	22	30
10	FORT WEAVER RD	GEIGER RD/IROQUOIS RD	21	35

Highways Program



- The programming process takes place prior to project delivery and may take the form of inclusion in our long-range plan, mid-range plan, and/or the metropolitan policy organization's Transportation Improvement Plan. More information on how to get involved can be found at <https://oahumpo.org/>
- Data used for programming includes conditions, volumes, and crashes

Project Lifecycle



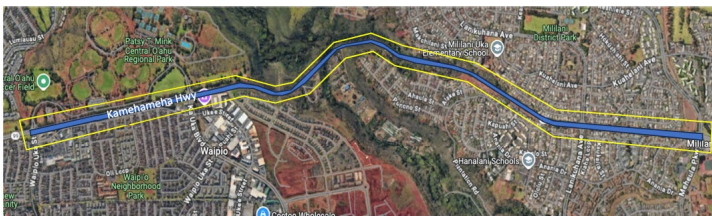
- Capital Improvement Projects in general follow a procurement and budgeting (14-16 months), environmental (36 months), design (24 months), and construction process (18-24 months)

Kamehameha Highway Improvements



- Paving of Kamehameha Highway between Waipahu and Ka Uka Blvd. is in design with estimated start of construction in 2028
- Two projects to add bike/ped connection along Kamehameha Highway between Kuahelani Avenue and Waipio Uka.
 - First project will add a crosswalk and improve the existing traffic signal system at Kuahelani Avenue in Phase 1 and will add a bike/ped path between Kuahelani and Meheula in Phase 2. Phase 1 has been awarded and contractor was given notice to proceed on Oct. 25, 2024. Phase 2 will be advertised in November 2025.
 - Second project to continue the bike/ped connection to Waipio Uka will be advertised for bid in July 2027 following Section 106, Section 7, 6E, and HRS 343 approval.
- Highway Safety Mural - HDOT working with 3 artists and area schools to create murals along the walls on Kamehameha Highway northbound between Waipahu Street and Waipio Uka.

PROJECT LOCATION

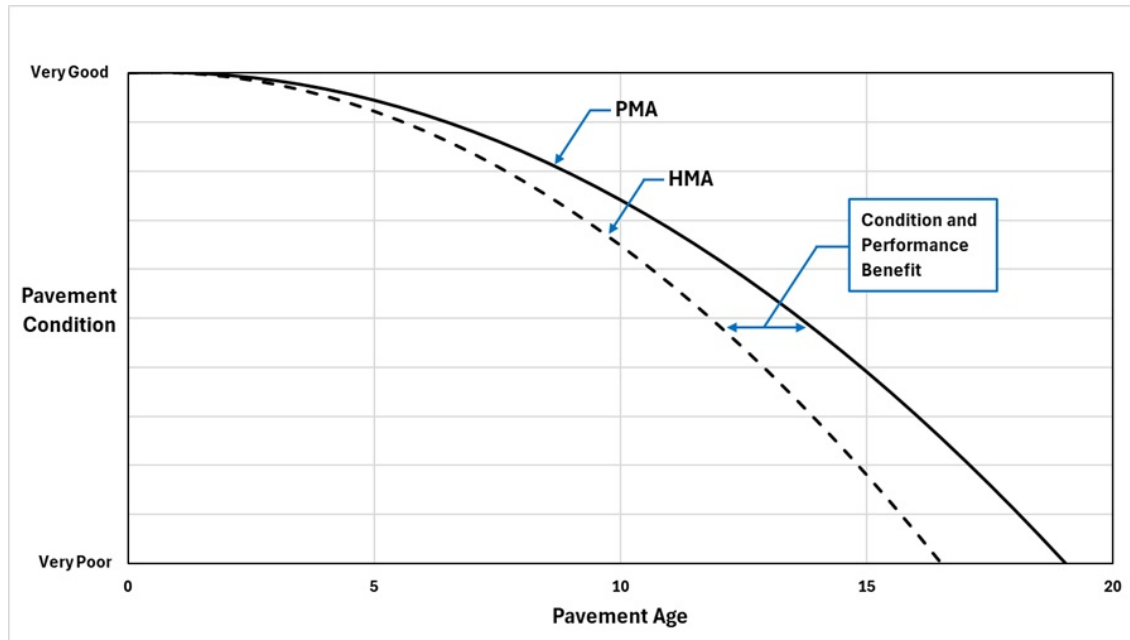


H-2 Improvements



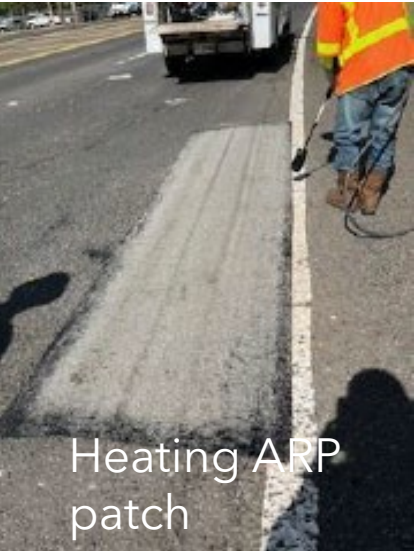
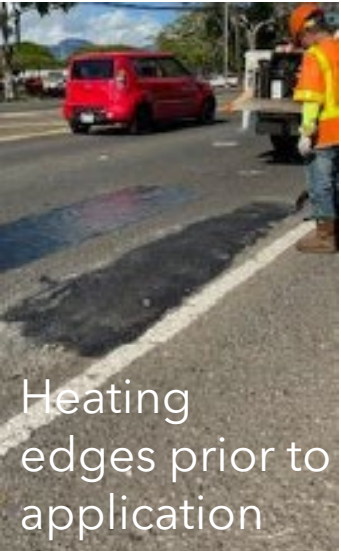
- Joint Repairs
 - Put out bid for repairs, initial delay was due to lack of availability of the expansion joints
 - Vendor was unable to deliver so HDOT revised design and will use cementitious deck and joint filler to repair
 - Repairs scheduled for May
- Grinding
 - Conducted on the right side of the H-1 west to the H-2 north Exit 8A in 2023-2024 to restore smoothness
- Cable median
 - Installation of a cable median between the Wahiawa Exit and Meheula Parkway Overpass
- Pre-cast panels
 - Contractor to use pre-cast Portland concrete panels to rehabilitate areas of the H-1 and H-2 (black patch areas)

Pavement Conditions



- Conditions are collected every year using a laser for smoothness and video for cracks/potholes.
- Conditions inform pavement project programming
- HDOT strategies to get best value/investment include:
 - Use of SMA, PMA, polymer overlays

Pothole Patching - Call 808-831-6714 or email complainthighwayoahu@hawaii.gov



H-1 Improvements

Project Name	Typical Work Schedule	Est. Completion
H-1 Airport Viaduct Improvements Vicinity of Valkenburg Street to Middle Street	Nightly, Tuesday – Monday, no work Monday nights 8 p.m. to 4 a.m. the following day	August 2025
H-1 Salt Lake Rehabilitation	Nightly, from 8 p.m. to 2:30 a.m. the following morning	July 2025
H-1 Pearl City and Waimalu Viaduct Improvements between the Halawa Interchange and the H-1/H-2 split	Nightly, Tuesday – Friday (AM) from 7 p.m. to 4:30 a.m. Friday from 7 p.m. to 8 a.m. Saturday Saturday from 7 p.m. to 9 a.m. Sunday	March 2027 (Will suspend night work during shearwater fledgling season. In discussions with USFW for future seasons)
H-201 Moanalua Freeway Paving between the H-3 Freeway ramp and the Fort Shafter overpass	Nightly, Sunday - Friday 7:30 p.m. to 6 a.m. the following day	December 2025
H-1 Eastbound Improvements - Ola Lane to Likelike Highway	24/7 - H-1 eastbound right shoulder near Ola Lane overpass. Nightly (when needed), Monday - Thursday, 9 p.m. - 4:30 a.m. the following day Friday from 9 p.m. to 7 a.m. Daily single lane closures on Gulick Overpass and Richard Lane, Monday - Friday, 8:30 a.m. to 5 p.m.	May 2027 Full closure (both directions of the H-1) will be needed in late 2025 for the reconstruction of the Gulick Avenue Overpass.
Joseph P. Leong Highway and Kamehameha Highway Rehabilitation (Waimea Bay Beach Park to Opaëula Stream Bridge)	Nightly (April 1 through May 1), Sunday - Thursday, 8:30 p.m. - 4 a.m. the following day Daywork (once turtle season starts) Monday - Friday, 8:30 a.m. to - 3 p.m.	Night work stopped at the end of April to coincide with the turtle nesting season. After that, the plan is to continue to work during the daytime at the Joseph P. Leong end of the project, where it should be easier to mitigate traffic impacts. Depending upon the severity of the traffic during daytime operations, the HDOT will decide on whether to continue working during the day for the rest of the project or put the project on hold until January 2026 when nighttime operations can resume.

Fire Mitigation



- Mililani Mauka emergency access road
 - Completed in coordination with the City for emergency evacuation to the H-2 northbound onramp
 - 15' wide gravel road with gates at either end
- Fire breaks
 - In 2025 to date, HDOT has cut 6 fire breaks in Central O'ahu at Waiawa Prison Road (1.4 miles in total, 10-foot wide)
 - Fire breaks are prioritized by HFD



EXIT 7

99 NORTH

Mililani Tech Park
Wheeler AAF

1/4 MILE

STEEL
PLATE

6
5

Mahalo