

Traffic Emergency Zone Declaration

Halawa on-ramp to the westbound H-1 Freeway

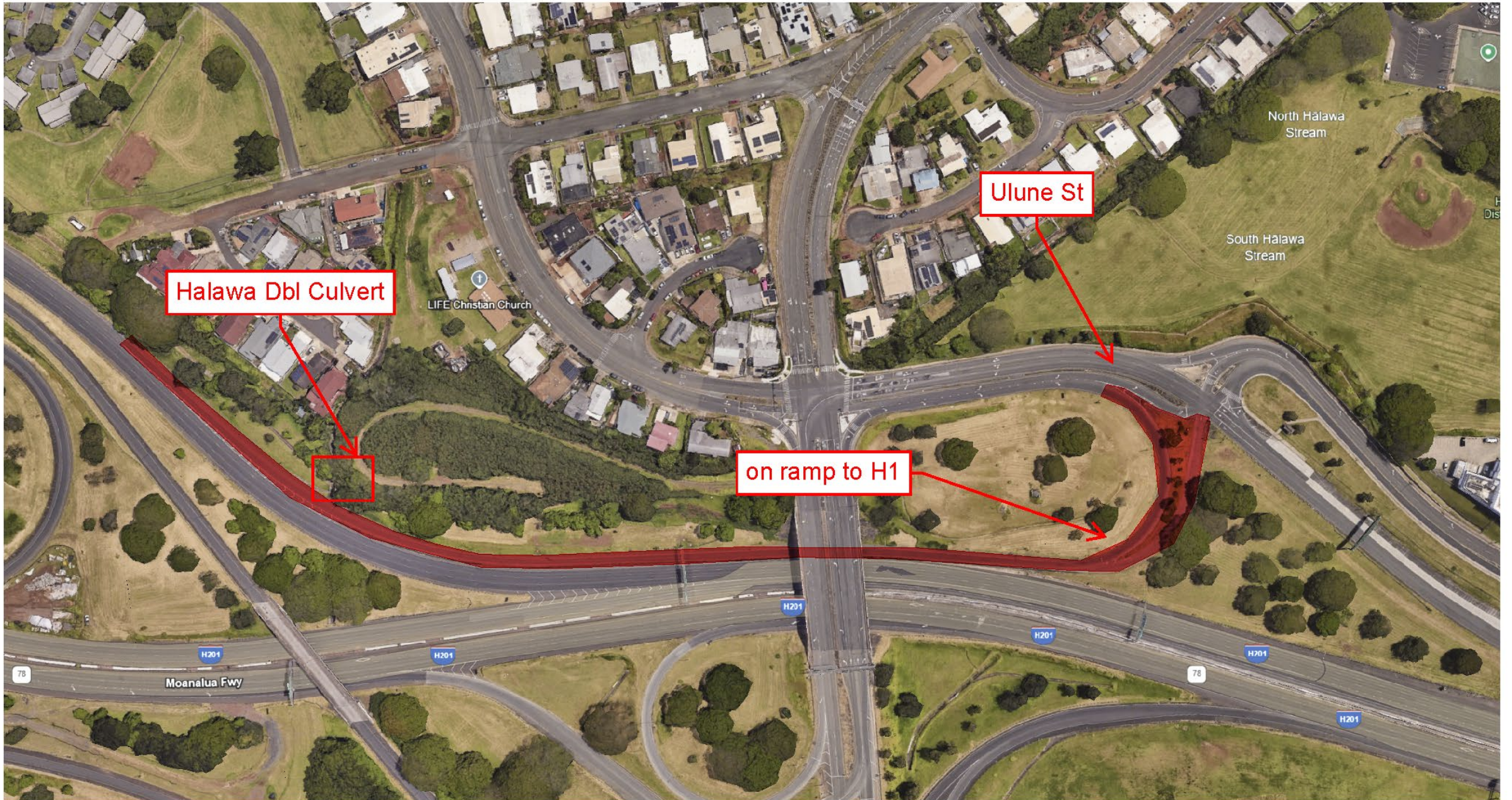
Agenda

- Traffic Emergency Zone
 - What is a traffic emergency zone?
 - What does the establishment of a traffic emergency zone do?
 - Why is HDOT declaring this for the H-1 Freeway at the Halawa on-ramp?
- Repair Plan
 - Current status
 - Details
 - Schedule

Traffic Emergency Zones

[§264-1.5] Emergency powers; traffic emergency zones. (a) Notwithstanding any law to the contrary, if the governor or state director of transportation, in the case of a state highway, or the mayor of a county or the county director of transportation, in the case of a county highway, determines that substantial endangerment to public health and safety is or is highly likely to be caused by the temporary closure of, or the lack of adequate access to an area by, a county highway or a state highway as defined under section 264-1(a), which requires immediate action, the governor or state director of transportation, in the case of a state highway, or a mayor of a county or the county director of transportation, in the case of a county highway, without a public hearing, may designate the area to be a traffic emergency zone, and may take any action that may be necessary until access to the designated area has been established. The designation shall fix a place and time, not later than twenty-four hours after the designation, for a hearing to be held before the state director of transportation, or the county director of transportation.

- Hawaii Revised Statutes Section 264-1.5 authorizes the Governor or the State Director of Transportation to designate a state highway as a “traffic emergency zone.”
- This allows for expedited procurement and waives certain permitting requirements.



Halawa Dbl Culvert

Ulune St

on ramp to H1

North Halawa Stream

South Halawa Stream

LIFE Christian Church

Moanalua Fwy

H201

H201

H201

H201

H201

78

78

Repair Plan



- Crews have cut through the existing corrugated metal pipe of the culvert.
- The voids under the culvert will be backfilled with Controlled Low Strength Material (CLSM) concrete.
- The CLSM will be reinforced with glass fiber reinforced polymer rebar.
- Repaired areas will be finished with shotcrete with a minimum strength of 4,000 PSI.

Work Schedule

- Repair duration is expected to be 14 days.
- Repairs will need closures of the Halawa/Ulune Street onramp to the westbound H-1 Freeway during the working hours.
 - Full closure of the ramp Monday, May 5, to Friday, May 9, 2025, daily, from 9 a.m. to 2 p.m.
 - Closure of the right shoulder on the ramp Monday, May 12, to Friday, May 16, 2025, daily, from 9 a.m. to 2 p.m.

Questions?